

Passcape Win CD Keys

USER MANUAL

**Copyright (c) 2021 Passcape Software. All rights reserved.
Passcape Software**

1. Introduction	3
1.1 About the program	4
1.2 Features and benefits	4
1.3 System Requirements	4
2. Working with the program	6
2.1 Main window	7
2.2 Manual recovery mode	7
2.3 Passwords window	8
2.4 Setting a Program Access Password	9
3. License and registration	10
3.1 License Agreement	11
3.2 Registration	12
3.3 Limitation of unregistered version	13
4. Technical support	14
4.1 Reporting problems	15
4.2 Suggesting features	15
4.3 Contacts	15
Index	0

Introduction

1 Introduction

1.1 About the program

Often you have to access your Windows or Office CD keys in order to install/reinstall the software or to find out if it's legally purchased. **Passcape Win CD Keys** is a program that can help you recover your lost CD keys for the currently installed Microsoft products:

- Microsoft Windows
- Microsoft Office
- Microsoft Visual Studio
- Microsoft FrontPage
- Microsoft OneNote
- Microsoft Visio
- Microsoft Money
- Microsoft SQL
- other products (not listed here) that store their keys in the registry.

The main and the most important feature of the program is custom keys retrieval. We included definitions for more than 390 software products. You can use your own templates to retrieve custom keys.

PWCDKEY can decrypt CD keys directly from Windows registry files. See [MANUAL recovery mode](#) for details.

1.2 Features and benefits

With this program you can:

- Recover CD keys stored in Windows Registry
- Choose between two (automatic and manual) recovery modes
- Export passwords to text, html or excel files
- Prevent an unauthorized program execution
- Decrypt passwords directly from Windows registry files. If your system is unbootable, just copy 'Software' registry file to a floppy or flash drive and then feed it to **PWCDKEY**.
- Extract Windows OEM license key from BIOS

1.3 System Requirements

Requirements

Windows NT+, less than 2Mb on your hard drive.

Compatibility

Actually we have not tested the program with all versions and products. Please inform us about YOUR recovered products (and versions). Your help will be appreciated. Microsoft Office 2000 is not supported. That's due to the fact that this version of Office doesn't store its product key anywhere.

Known issues or bugs

The program although contains no harmful code, may be detected by some anti-virus/anti-spyware software as potentially dangerous or "potentially unwanted program". This is also known as "False Alert", and it's quite a common problem for all password recovery software.

Working with the program

2 Working with the program

2.1 Main window

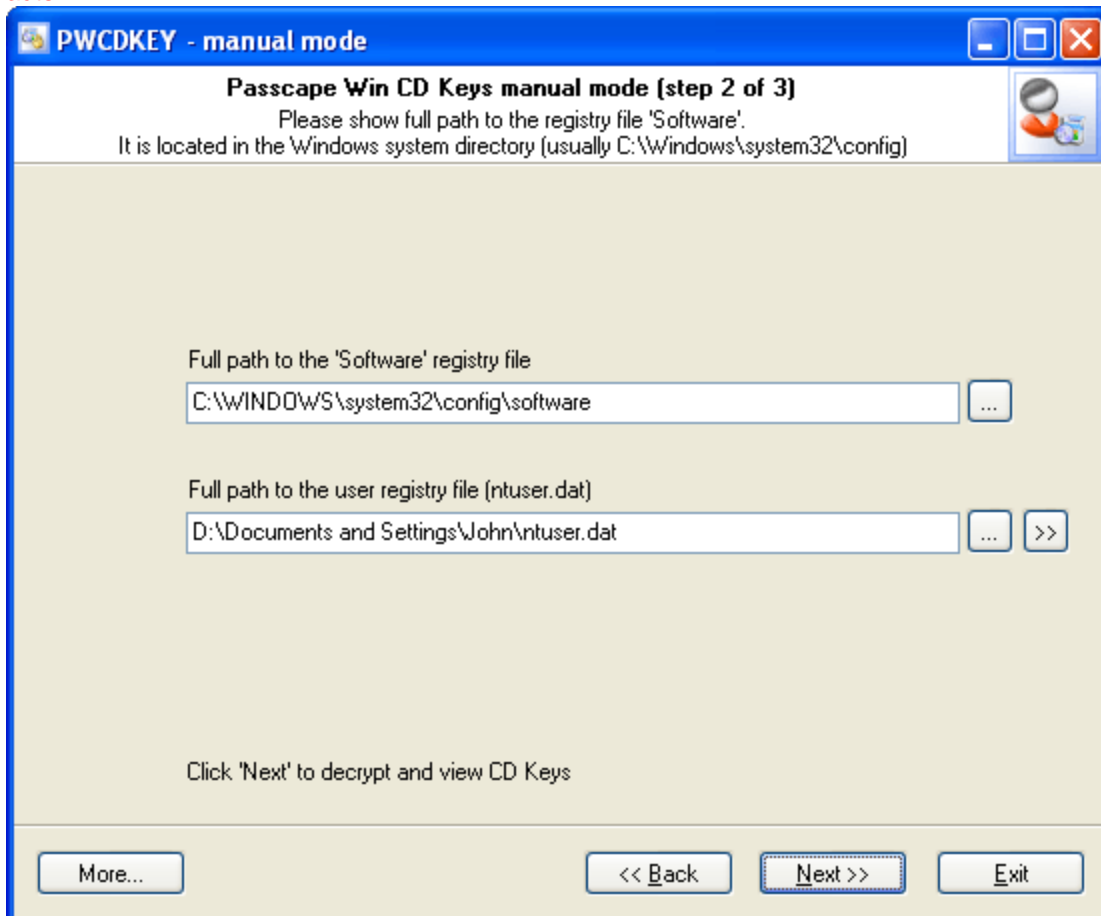
The main window of the program allows you to choose one of the two recovery modes:

- **AUTOMATIC** - select this mode to recover all product keys of the current system
- **MANUAL** - recover product keys directly from Windows registry files

2.2 Manual recovery mode

Almost all Microsoft product keys are stored in the Windows registry. But you may lose all these keys after your reinstall Windows. PWCDKEY can help you recover lost CD keys directly from Windows registry files. Just specify the full path to the 'Software' file. It is located in the Windows system directory (typically C:\Windows\system32\config\Software). Some product keys however can be stored in the current user registry (HKEY_CURRENT_USER tree). So you should provide ntuser.dat registry file. It is located in the user profile directory (typically C:\Documents And Settings\

Important! Using the program provided that you are the legal owner of all files or data you are going to recover through the use of our software or have permission from the legitimate owner to perform these acts.



If your system failed to boot up, please follow the steps shown below:

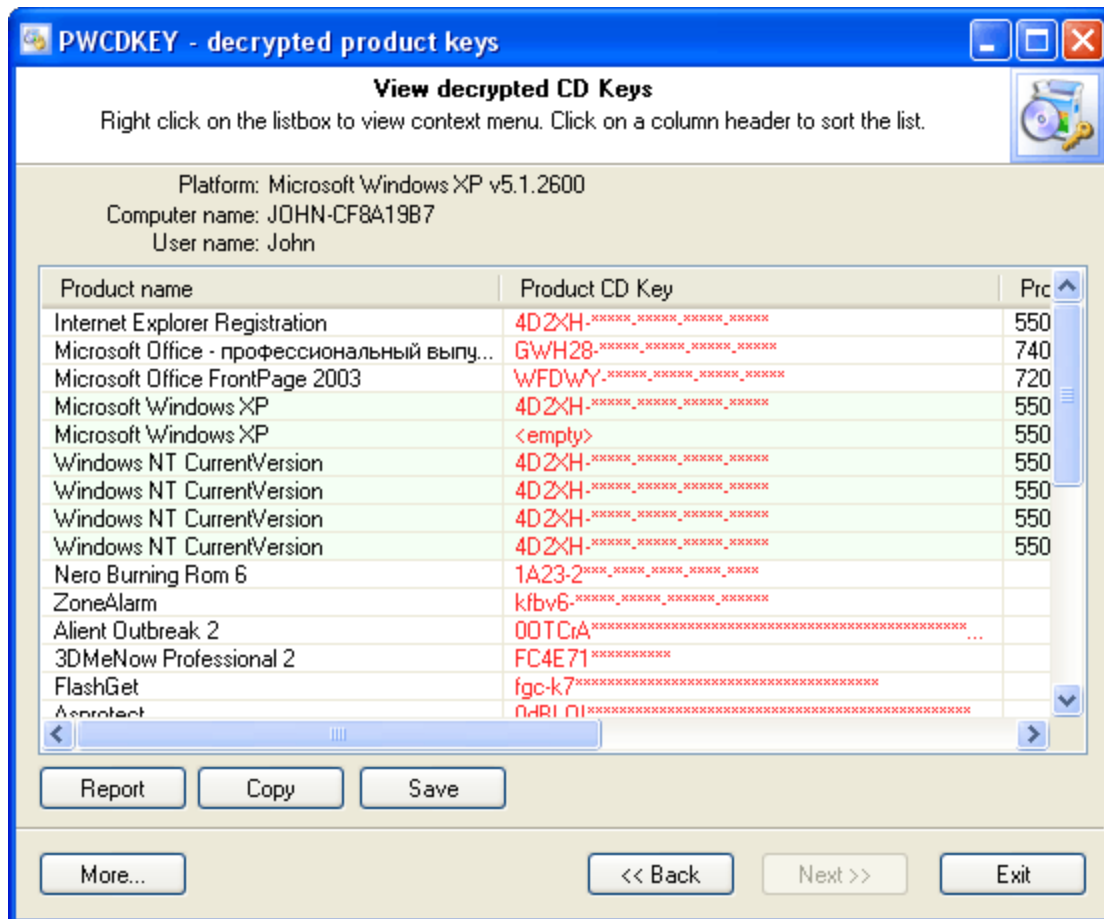
- 1) Create any bootable CD or USB flash drive to boot from. Use WinPE or BartPE for example.
- 2) Boot the dead system from this drive.
- 3) Find and copy the registry file C:\WINDOWS\System32\Config\software to an USB or Floppy drive. Assumed that C:\WINDOWS is your Windows directory.
- 4) Copy ntuser.dat file to an USB or Floppy drive. Typically ntuser.dat located in the user profile directory.
- 5) Run **PWCDKEY** in the manual recovery mode and enter the full path to the saved registry file.

Note. Sometimes a system does not start because of corruption in the registry. When you try to start or restart your Windows, you may receive the following error message:

Stop: c0000218 (Registry File Failure) The registry cannot load the hive (file):
\SystemRoot\System32\Config\SOFTWARE or its log or alternate
So you need to refer to [this](#) article to fix the problem first.

2.3 Passwords window

The password window contains found and decrypted CD keys:

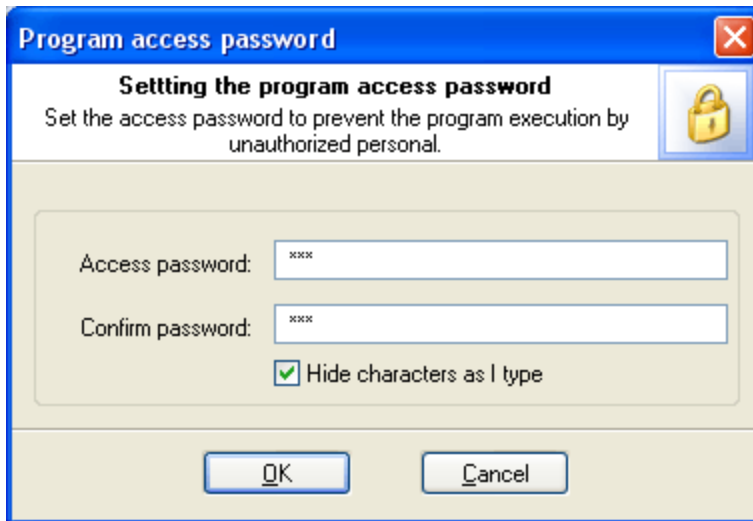


Right click on the password list to view the context menu.

Windows product key is highlighted in green.

2.4 Setting a Program Access Password

Setting an access password can help to avoid the program execution by unauthorized persons. To open the "Set Access Password" dialog box, click 'more...' (in the **PWCDKEY** main window) and select the 'Set/change access password' from the popup menu.



To set an access password, you have to enter a new password and confirm it by retyping it in the confirmation field.

Remember! The access password is case-sensitive.

To remove the current password, leave the password fields blank.

Next time you run the program, you will be asked for the password as shown below.



Type your current password in the password box and click **OK** to run the program.

License and registration

3 License and registration

3.1 License Agreement

=====

SOFTWARE LICENSE AGREEMENT

=====

IMPORTANT-READ CAREFULLY: This is the End User License Agreement (the "Agreement") is a legal agreement between you, the end-user, and Passcape Software, the manufacturer and the copyright owner, for the use of the "Passcape Win CD Keys" software product ("SOFTWARE").

All copyrights to SOFTWARE are exclusively owned by Passcape Software.

The SOFTWARE and any documentation included in the distribution package are protected by national copyright laws and international treaties. Any unauthorized use of the SOFTWARE shall result in immediate and automatic termination of this license and may result in criminal and/or civil prosecution.

You are granted a non-exclusive license to use the SOFTWARE as set forth herein.

You can use trial version of SOFTWARE as long as you want, but to access all functions you must purchase the fully functional version. Upon payment we provide the registration code to you.

Once registered, the user is granted a non-exclusive license to use the SOFTWARE on one computer at a time (for every single-user license purchased).

With the personal license, you can use the SOFTWARE as set forth in this Agreement for non-commercial purposes in non-business, non-commercial environment. To use the SOFTWARE in a corporate, government or business environment, you should purchase a business license. With the business license you can run the SOFTWARE on multiple computers within a single site. A multi site license authorizes you to install and use the SOFTWARE to any number of computers belonging to your organization - no matter where they are located.

The registered SOFTWARE may not be rented or leased, but may be permanently transferred together with the accompanying documentation, if the person receiving it agrees to terms of this license. If the software is an update, the transfer must include the update and all previous versions.

You may not create any copy of the SOFTWARE. You can make one (1) copy the SOFTWARE for backup and archival purposes, provided, however, that the original and each copy is kept in your possession or control, and that your use of the SOFTWARE does not exceed that which is allowed in this Agreement.

The SOFTWARE unregistered (trial) version may be freely distributed, provided that the distribution package is not modified. No person or company may charge a fee for the distribution of the SOFTWARE without written permission from the copyright holder.

You agree not modify, decompile, disassemble, otherwise reverse engineer the SOFTWARE, unless such activity is expressly permitted by applicable law.

Passcape Software does not warrant that the software is fit for any particular purpose. Passcape Software disclaims all other warranties with respect to the SOFTWARE, either express or implied. Some jurisdictions do not allow the exclusion of implied warranties or limitations on how long an implied warranty may last, do the above limitations or exclusions may not apply to you.

The program that is licensed to you is absolutely legal and you can use it provided that you are the legal owner of all files or data you are going to recover through the use of our SOFTWARE or have permission from the legitimate owner to perform these acts. Any illegal use of our SOFTWARE will be solely your responsibility. Accordingly, you affirm that you have the legal right to access all data, information and files that have been hidden.

You further attest that the recovered data, passwords and/or files will not be used for any illegal purpose. Be aware password recovery and the subsequencial data decryption of unauthorized or otherwise illegally obtained files may constitute theft or another wrongful action and may result in your civil and (or) criminal prosecution.

All rights not expressly granted here are reserved by Passcape Software.

3.2 Registration

You can order fully registered version of **PWCDKEY** at a cost of \$22 for non-commercial personal usage, \$44 for business or \$390 for multi site license.

Detailed instructions for all kinds of orders are available online at [Passcape ordering page](#). Online orders are fulfilled in just a few minutes 24 hours a day 7 days a week.


On payment approval (for online orders, usually within a few minutes), we'll send you the registration code which will remove all limitations of the unregistered version. Your registration will be valid for all future versions of **PWCDKEY**.

The ordering pages are on a secure server, ensuring that your confidential information remains confidential. As soon as your order is processed (usually in one business day for on-line payments), you will be provided with the registration code for your copy of the program. If you've made a payment, but haven't received a confirmation letter with your registration code within a reasonable amount of time (two business days for credit card payments or two weeks for other payments), please notify us!

Important: when completing the order form, please double-check that your e-mail address is correct. If it will not, we'll be unable to send you the registration code.

To complete the registration process

- Run the program
- Click **more...** button
- Select **Registration** from the popup menu
- Enter your registration code and name (optional) into the related fields and press **Register** button.

A screenshot of a Windows-style dialog box titled "Registration". The dialog has a blue title bar with a close button (X) in the top right corner. Below the title bar, the text "Please enter your registration code..." is displayed. To the right of this text is a small icon of three people. Below this is a section titled "Registration information" in blue text. Inside this section, there are two text input fields: "Your name (optional):" with the text "John" entered, and "Registration code:" which is empty. Below the input fields, there is a paragraph of text: "Enter the registration code exactly as given to you in the registration e-mail. If you experience any problems during registration process, please refer to program help." At the bottom center of the dialog is a button labeled "Register".

It is recommended to use the Copy and Paste commands instead of typing the code by hand. To do that, select the license key text in the registration message you have received with the mouse or using the text selection keyboard shortcuts (**Shift + arrow keys**). Then press the **Ctrl + Ins** shortcut on the keyboard to copy the selected block to Windows' Clipboard. Then open the registration window in the program, place the cursor in the registration key field and then press the **Shift + Ins** shortcut on the keyboard to paste the text from clipboard to that field. Next, place the cursor in the user name field, enter your name and then click on the **Register** button. If you have done everything right, the program will display the confirmation message.

3.3 Limitation of unregistered version

An unregistered version of **Passcape Win CD Keys** shows only first 5 characters of decrypted keys and has some functional limitations. To cancel these limitations please consider [purchasing](#) the full version.

Technical support

4 Technical support

4.1 Reporting problems

If you have a problem, please contact us at support@passcape.com. Please inform us about the following:

- Windows version including service packs and other fixes installed
- Program full version (see **About** dialog)
- Program registration information if any
- Detailed description of your problem (as much information as possible)

If you're reporting about program error, please attach **Crash.log** and **Pwcdkey.log** files located in the **Passcape Win CD Keys** installation directory.

4.2 Suggesting features

If you have any questions, comments or suggestions about the program or would like more information, email us at: info@passcape.com. Please don't forget to mention the program name and version. Also make sure you have the latest program version installed. Your feedback helps us to improve our products and work more effective.

4.3 Contacts

Please don't hesitate to send your questions regarding our products to e-mail support@passcape.com. You will get reply during one or two days. Note, that registered users have priority in technical support.

If you experience any problems during registration process, please send a letter to sales@passcape.com
We will be happy to assist you with the registration.

Please write in English!

You can find other password recovery utilities at <https://www.passcape.com>.