

PowerPoint Password Recovery

USER MANUAL

Copyright (c) 2024 Passcape Software. All rights reserved.
Passcape Software

1.	Introduction	5
1.1	About the program	6
1.2	Features and benefits	6
1.3	System requirements	7
2.	Program's interface	8
2.1	Overview	9
2.2	Project menu	10
2.2.1	Open Document	10
2.2.2	Save Password	10
2.2.3	New	10
2.2.4	Open	10
2.2.5	Save	10
2.2.6	Save as	10
2.2.7	Close	11
2.3	Recovery menu	11
2.3.1	Run	11
2.3.2	Continue	11
2.3.3	Stop	11
2.4	Edit menu	11
2.4.1	Open Highlighted	11
2.4.2	Delete	11
2.4.3	Remove Document Protection	12
2.4.4	Copy	12
2.4.5	Select	12
2.4.6	Search	12
2.5	Reports Menu	12
2.5.1	Password reports	13
2.5.2	Attack statistics	14
2.5.3	Miscellaneous statistics	15
2.5.4	Password-list analysis	15
2.6	Tools menu	17
2.6.1	Program access	17
2.6.2	Pass-o-meter	18
2.6.3	Password Checker	19
2.7	Utils menu	19
2.7.1	Asterisk Password Revealer	20
2.7.2	Wordlist tools	20
2.7.2.1	Create new wordlist by indexing files	21

2.7.2.2	Merge wordlists	23
2.7.2.3	Wordlist statistics	24
2.7.2.4	Sort wordlist	25
2.7.2.5	Convert/compress wordlist	26
2.7.2.6	Compare wordlists	27
2.7.2.7	Additional operations	28
2.7.2.8	Index HDD sensitive areas	30
2.7.2.9	Extract HTML links	33
2.8	Settings menu	35
2.8.1	General settings	35
2.8.1.1	General options	35
2.8.1.2	Attack options	36
2.8.1.3	CPU settings	37
2.8.1.4	GPU settings	38
2.8.1.5	Sound notifications	39
2.8.2	Attack Settings	39
2.8.2.1	Preliminary attack	39
2.8.2.2	Artificial intelligence attack	40
2.8.2.3	Fingerprint attack	42
2.8.2.4	Brute-force attack (exhaustive search)	45
2.8.2.5	Dictionary attack	46
2.8.2.6	Mask attack	50
2.8.2.7	Base-word attack	52
2.8.2.8	Combined dictionary attack	53
2.8.2.9	Pass-phrase attack	58
2.8.2.10	Hybrid dictionary attack	61
2.8.2.11	Batch attack	69
2.9	View menu	70
2.10	Themes menu	70
2.11	Help menu	70
2.12	Hardware Monitor	71
3.	Working with the program	72
3.1	Password recovery methods	73
3.2	Attack comparison table	74
3.3	GPU FAQ	77
3.4	Online dictionaries	79
4.	License and registration	81
4.1	License agreement	82
4.2	Registration	83
4.3	Limitation of unregistered version	84
4.4	Editions of the program	84

5. Technical support 86

5.1 Reporting problems 87

5.2 Suggesting features 87

5.3 Contacts 87

Index 88

Introduction

1 Introduction

1.1 About the program

Welcome to **PowerPoint Password Recovery** - a professional utility for recovering lost and forgotten passwords for Microsoft PowerPoint. It can as well remove protection from password-protected PowerPoint documents. PowerPoint Password Recovery is the only software solution that employs the most advanced password recovery methods developed by our company.

New encryption standards employed in Microsoft Office 2007 - 2021 application provide sufficient security. Prior editions of PowerPoint feature a rather weak password protection. In PowerPoint 2007, protection was significantly enhanced since a modern protection algorithm (Advanced Encryption Standard) started being used. No computer can currently break a protection which uses a 128-bit key. With the help of SHA-1 hash function, a password is converted into a 128-bit key 50000 times, and because of that, password recovery speed was dropped drastically (50000 times actually). PowerPoint 2010 still employ AES-128 by default, but the number of SHA-1 conversion rounds was doubled and comprises 100000. Therefore, password recovery speed was reduced two times compared to PowerPoint 2007. Microsoft PowerPoint 2013 by default uses an even tighter encryption compared to the already strong PowerPoint 2010. To further strengthen the protection, Microsoft increased the key size to 256 bits and replaced SHA-1 hashing algorithm with a slower SHA-512.

So it's obvious that Microsoft makes subsequent PowerPoint releases more and more secure and brute-force as a primary password recovery technique becomes less and less efficient. PowerPoint 2013 sets a new standard in document encryption, pretty much taking brute-force-like recovery out of the question. This is where **PowerPoint Password Recovery** comes into a play with its variety of smart attacks developed in our company and implied in our products only. For example, the Artificial Intelligence attack scans your local PC, searches, indexes and creates the list of all found words and passwords used earlier, analyzes them, upon the results of the analysis produces user's preferences, performs the further word mutation and, attempts to guess the password.

1.2 Features and benefits

PowerPoint Password Recovery has a number of advantages compared to similar solutions:

- Contemporary, customizable graphical interface.
- Built-in support for password search using both CPU and GPU power.
- Over 10 types of password recovery, many of which have been developed by and implemented in our company's products only.
- Advanced audit reports.
- Additional tools, including powerful utilities for creating and managing dictionaries. For example, you can create your own word-lists by indexing the files on your hard disk drive.
- 'On the fly' decryption of some weak passwords.
- Instant password removal for certain password-protected documents.
- Dictionary recovery supports text word-lists in ASCII, UNICODE, UTF8, PCD, RAR and ZIP.
- Great choice of online word-lists for dictionary attacks, optional unique collection of passwords and pass-phrases (over 50 Gb).
- Some of the program's functions, such as word mutation, are unique. Total number of mutation rules exceeds one hundred and fifty. No similar application carries this!
- Guaranteed password recovery for MS Office 97-2003 documents with 40-bit encryption key.

1.3 System requirements

Requirements

Windows XP or higher OS, about 50 Mb hdd space, 512 Mb RAM.

The program supports NVidia video cards with CUDA compute capability 3.5 or higher and AMD/ATI Radeon 7xxx or higher GPUs.

Compatibility

Microsoft PowerPoint 97 - 2021 documents are supported.

Known problems

When running on older systems (Windows 2000), you should manually copy GDIPLUS.DLL to the program's directory. The program although contains no harmful code, may be detected by some anti-virus/anti-spyware software as potentially dangerous or 'potentially unwanted program'. This is also known as 'False Alert', and it's quite a common problem for all password recovery software.

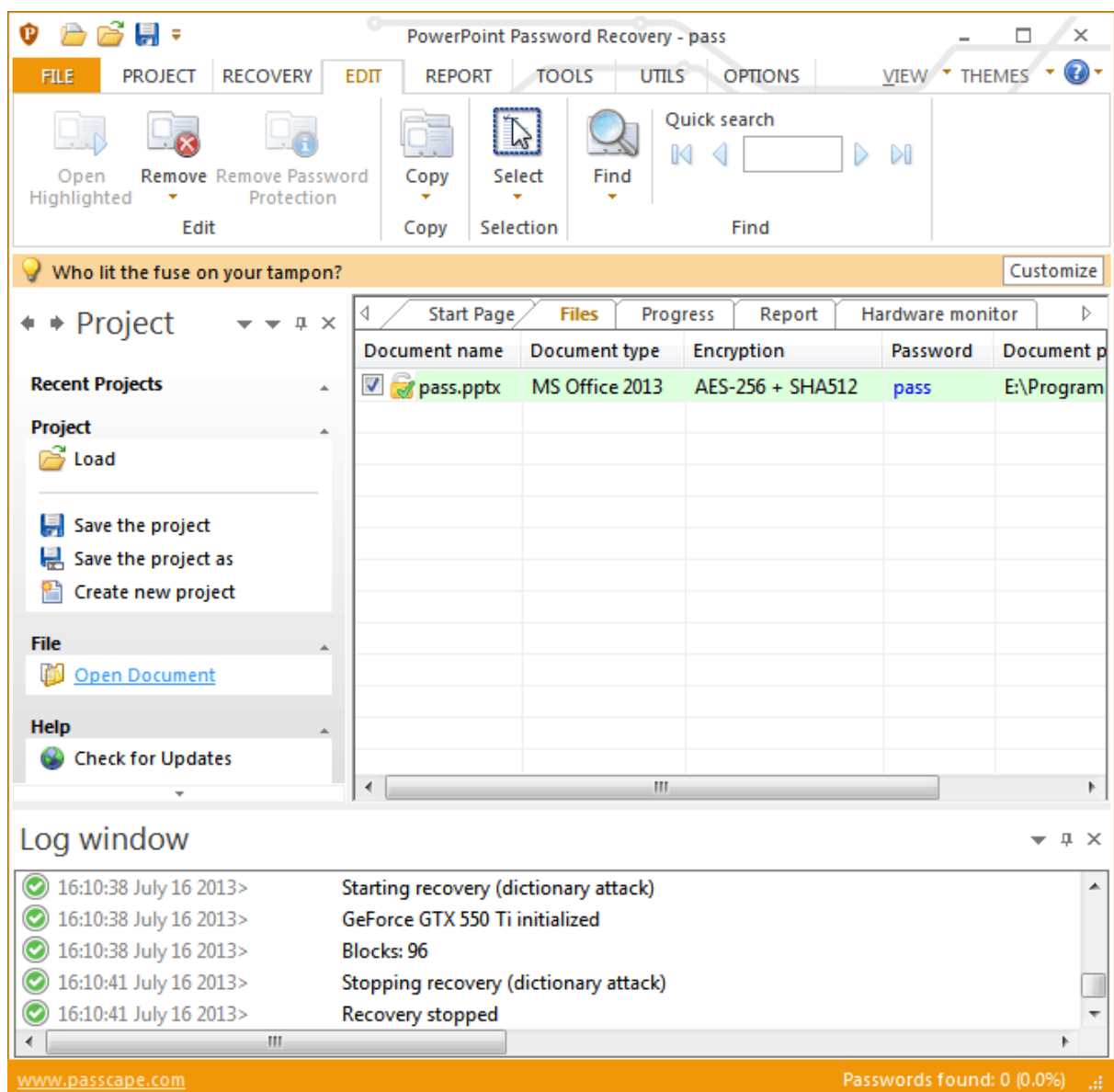
Program's interface

2 Program's interface

2.1 Overview

The program's interface is made in the form of the SDI architecture, i.e. it allows working with only one project at a time. The program's operation can be conventionally divided into 4 stages:

1. Creating a project
2. Loading password-protected documents into the project. Editing the document list: deleting, adding, selecting documents etc.
3. Password recovery. Includes selecting, configuring and launching the selected one or several attacks.
4. Analyzing the results.



The entire interface can be conventionally divided into several components:

- Menu Bar

- Information Bar - for displaying brief information texts - like tips, warnings, etc.
- Task Bar - duplicates and compliments the menu bar, providing quick access to the most common operations. Consists of three parts:
 - Project - includes the main operations over project - like opening, closing, creating a new project, and loading documents.
 - Document Editor. Duplicates the most common editing operations.
 - Tools - includes a clock, calendar, and calculator.
- Main Window - consists of several parts. The first tab is the welcome window. The second tab contains the list of documents to be analyzed and recovered. Then there goes a tab with the current attack state (progress) indicator and a tab with the statistics and reports. And finally - a tab with the hardware monitor.
- Log Window - displays information on the current state of the application, current operation, etc. The program's log can be copied to clipboard or saved to a file (right-clicking opens the corresponding menu).
- Status Bar is designed for informational purposes.

2.2 Project menu

2.2.1 Open Document

Here you can load a new password-protected document into the project.

2.2.2 Save Password

All recovered passwords can be saved to text file.

2.2.3 New

Saves current project and creates a new one.

2.2.4 Open

Loads/opens a new project. The application's projects have the *.ppointpr extension and contain program settings and document links. However, for speeding up the search speed, the program stores the current state of the attack in a separate file progress.ini.

2.2.5 Save

Saves current project. It is recommended to save critical projects from time to time.

2.2.6 Save as

Saves current project under a different name (renames it).

2.2.7 Close

Closes current project.

2.3 Recovery menu

This menu item allows selecting and launching an attack. Take a note that before actually launching the recovery you must have selected/marked the necessary document. You can do that through the **Edit-Select** menu. Launching the recovery assumes that you have also made all the required settings (on the **Options-Attack Options** menu).

2.3.1 Run

Launches selected attacks. When an attack is running, all other items on the menu are disabled. Please note that when the recovery is over, the program may select another document and re-run the attack. This option is off by default, but it can be enabled in the general settings.

2.3.2 Continue

Resumes attack from the last stored point. Please remember that the last stored point is automatically erased when changes are made to the attack's options.

2.3.3 Stop

Pauses current attack.

2.4 Edit menu

The Edit menu is available only when the 'Files' tab is active; it includes four items: Edit, Copy, Select, and Search.

2.4.1 Open Highlighted

Opens the selected document in Microsoft PowerPoint.

2.4.2 Delete

Deletes files from the list: highlighted (i.e. the one being under the cursor), marked or all at once.

2.4.3 Remove Document Protection

Password protection in PowerPoint, which is not related to document encryption, typically varies in its functionality. In Microsoft PowerPoint, this type of protection includes passwords that restrict document modification and passwords that prohibit users from opening and modifying VBA macros.

Because of the lack of reliable protection, all those passwords can simply be removed from PowerPoint documents instantly.

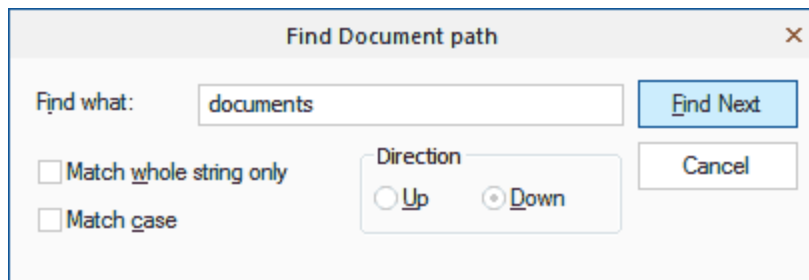
2.4.4 Copy

Copies current (highlighted) entry to Windows clipboard. Copies only the selected portion of the entry, not the entire entry. For example, document name or the found password.

2.4.5 Select

Selects a password-protected document to be recovered. If during an attack the password for the selected document is found, the checkbox will be automatically cleared, and the entry will be marked green.

2.4.6 Search



When the number of entries exceeds hundreds, finding a specific entry often takes quite a time. To make the job easier, the program offers the search of two types: searching a specific field - e.g., file name - and quick-searching of serial entries. In the latter case, the program scans the entire entry, character by character.

2.5 Reports Menu

You can create, print or save one of the program's reports here. The following reports are available:

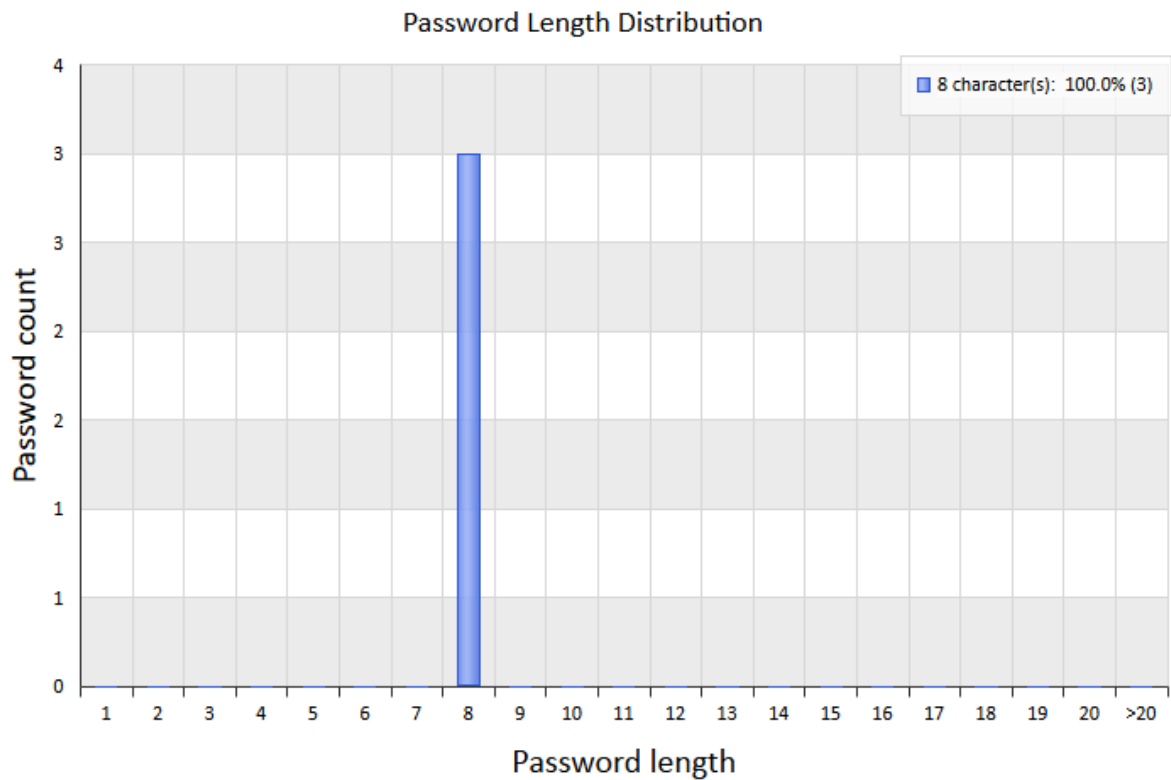
- [Password reports](#)
- [Attack statistics](#)
- [Miscellaneous statistics](#)
- [Password-list analysis](#)



2.5.1 Password reports

The following reports are available here:

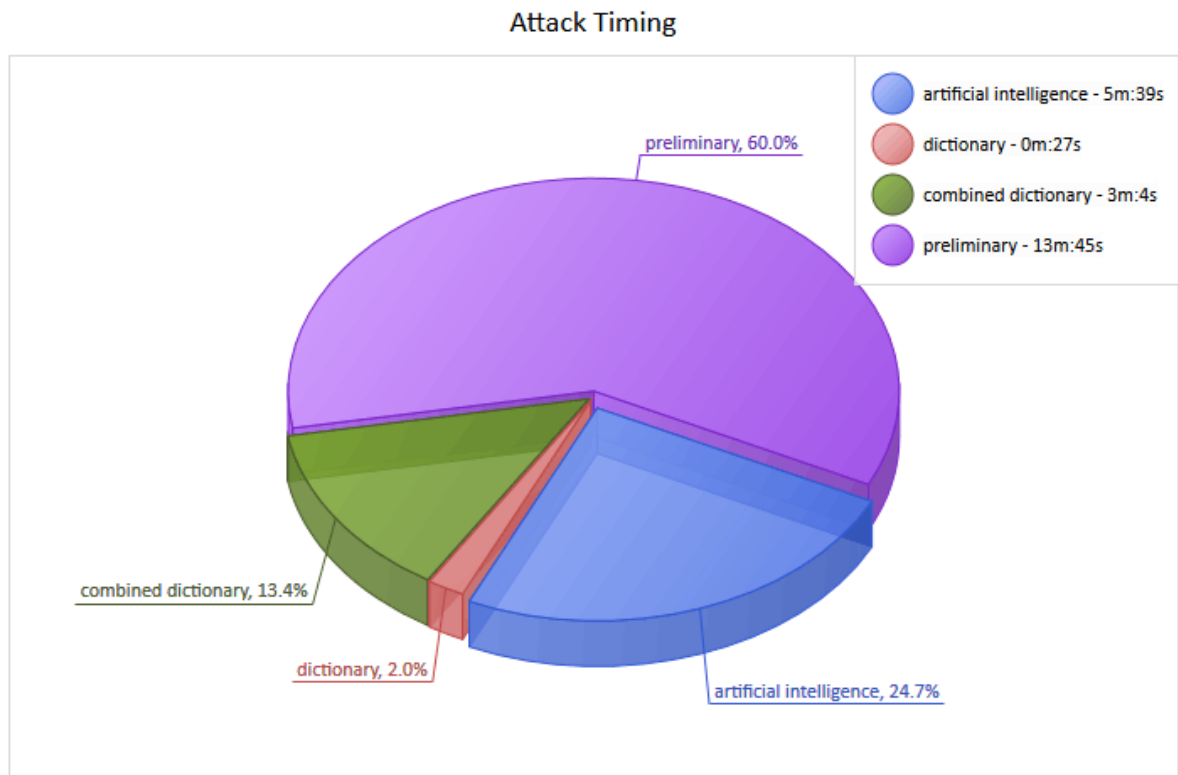
- **Password risk status** - displays empty, found, and not recovered passwords
- **Password complexity** - reports the number of passwords and various character sets being audited
- **Password length distribution** - shows overall length of the broken passwords
- **Password recovery time** - time took to crack a certain password(s). Most vulnerable passwords are marked in red palette.
- **Recovered vs unbroken passwords** - displays the number of discovered and not-found passwords
- **Passwords found** - shows a bit detailed report on found passwords



2.5.2 Attack statistics

Attack statistics includes the following items:

- **Preferred attack** - statistics on number and type of used attacks.
- **Attack time** - analysis of time spent on each attack.
- **Attack efficiency1** - efficiency analysis: time spent vs. passwords found during attack ratio.
- **Attack efficiency2** - efficiency analysis: overall efficiency for each attack.



2.5.3 Miscellaneous statistics

Some additional stuff like:

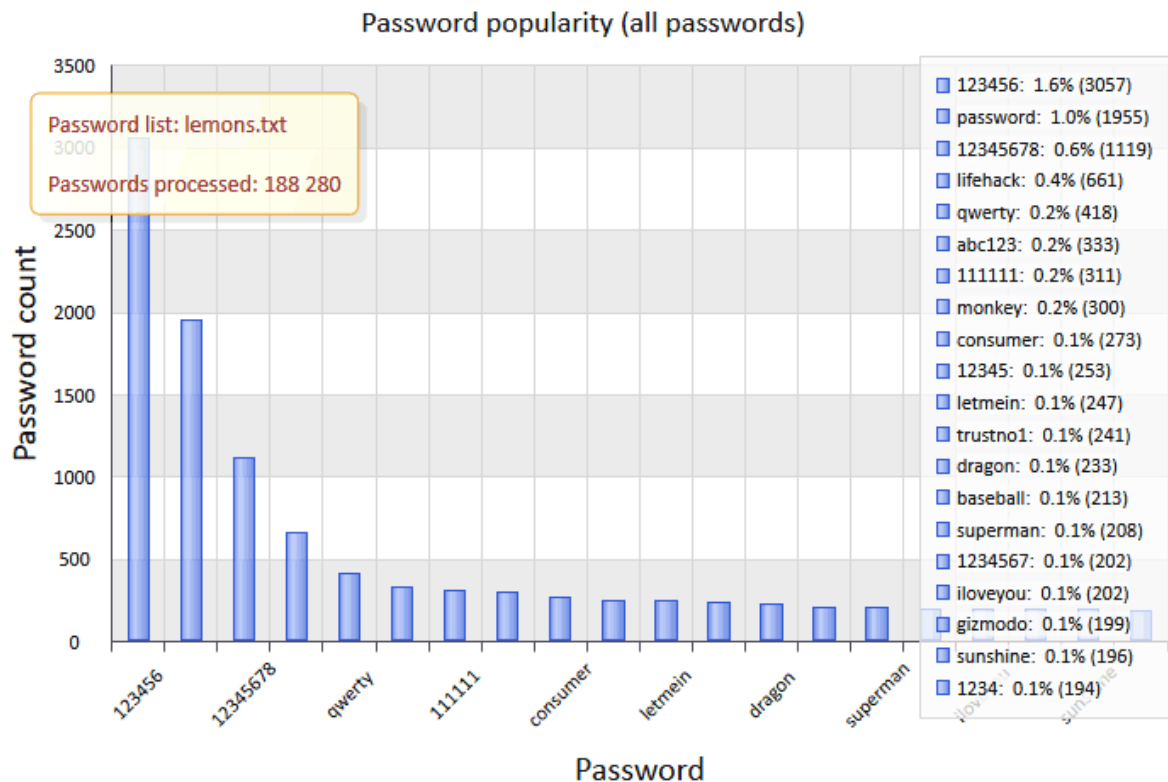
- **CPU speed** - password recovery speed comparison (for brute-force attack).
- **GPU speed** - shows and compares password recovery speed for your GPU device.
- **Cracked users** - displays the number of cracked entries. The full list of cracked entries can be saved to text file additionally.
- **Cracked users and passwords** - displays the list of cracked entries and passwords.

2.5.4 Password-list analysis

Password-list reports display various statistics and perform a deep analysis for input wordlists. As a source wordlists you can use, for example, the list of passwords recovered by the program. You can generate reports for all words of the input list as well as for passwords with a certain length only. The following reports are available here:

- **Password length distribution** - displays the overall length of the password in a given wordlist.
- **Password uniqueness** - this report shows unique against identical passwords chart.
- **Password popularity** - displays the most popular passwords and their percentage of the total number of passwords.

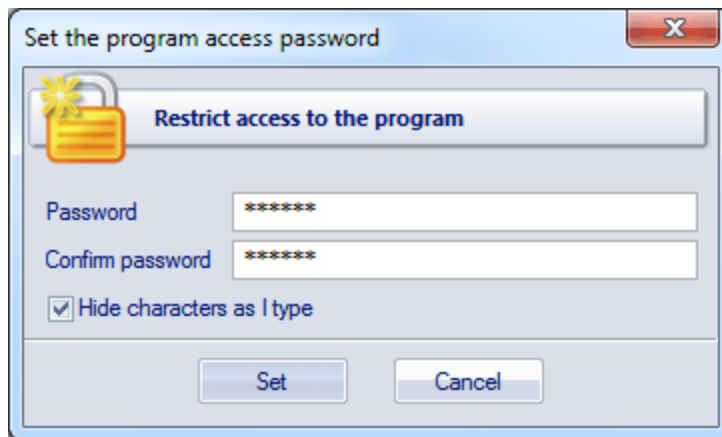
- **Password format** - statistics on the 20 most popular formats. The password format is defined by a character mask. For example, the DDUUUUDD mask corresponds to passwords consisting of two leading and two trailing digits, with four capital letters in the middle. You can save popular password masks into a file so that you can easily use them in a mask-based attack later.
- **Character set exclusivity** - this report displays the number of passwords consisting of one unique character set and the percentage of these passwords to those consisting of several ones.
- **Character set diversity** - the percentage ratio of passwords consisting of one, two, or more character sets.
- **Character sets** - lists all charsets the input passwords are made of.
- **Character set ordering** - the most popular password templates corresponding to the character set order. For example, the *digit-string-special* template includes the following passwords: 123password!@#, 1ove****, and 12monkey^, etc.
- **Character frequency** - statistics on the frequency of characters in the input words. The 20 most frequent characters are displayed.
- **Unique characters** - the 20 least frequent characters.
- **Frequently used leading characters** - statistics on the most frequent combinations of 1 to 3 characters in the beginning of words.
- **Frequently used trailing characters** - statistics on the most frequent combinations of 1 to 5 characters in the end of words.
- **Frequent combinations** - the 20 most frequently used combinations of 4 to 8 characters.



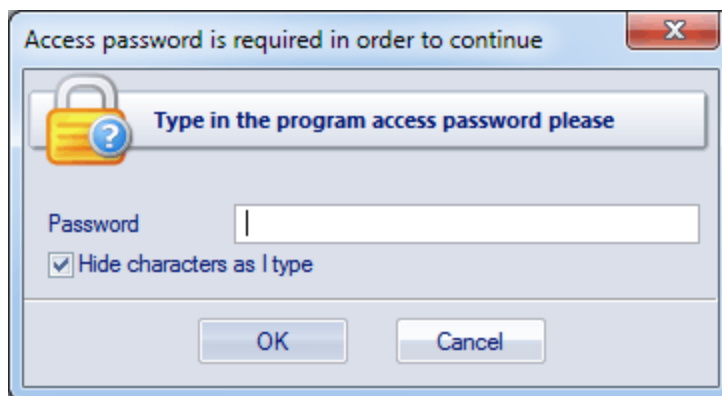
2.6 Tools menu

The Tools consists of two parts: tools for controlling access to the application and tools for working with passwords.

2.6.1 Program access



If anyone besides you can access your computer or account, you can password-protect the application. In this case, when starting the program, user will be prompted for the password, and the application will fail to continue unless the valid password is supplied.



2.6.2 Pass-o-meter

Pass-o-meter

Check the quality of your password

The password quality depends on its length and complexity. Microsoft Office applications have a strong protection. Thus cracking the passwords may take even ages for no success. Note however that if your password contains a common word or a phrase, it should be always considered as weak.

Source password

Document type: Microsoft Office Excel 2013

Type in your password: test

Charset length: 26

Recovery configuration

Recovery speed: 822 passwords per second

Hardware: AMD Radeon HD 7870 (GPU) Adjust

Password quality

Password quality:

Time to crack: 9m:38s

[Share your benchmarks](#) OK

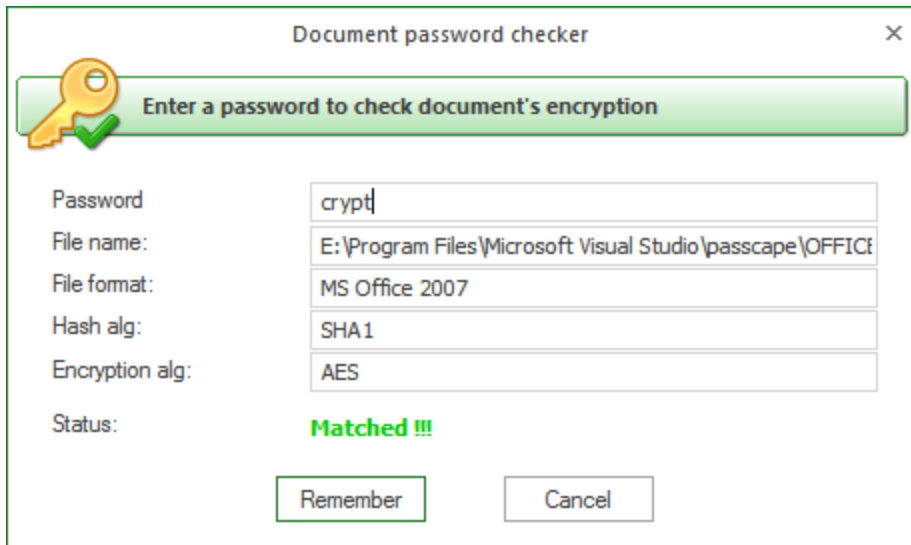
A tool for measuring password strength. During its first start, the program asks you to test your computer's performance. To check the quality of a password:

- Enter the password in the corresponding field.
- Select the computer type.
- Select the hardware supposed to be used for cracking. *'This computer'* indicates your computer's search speed.
- If you want to test the speed of your GPU device, select *'This computer (GPU)'* from *'Recovery speed'* combo box and click *Adjust* button. Note, that you can do it from *Reports* menu as well.

You will see the quality of your password and time required to break it.

We would be grateful if you let us know the speed you've reached on your hardware.

2.6.3 Password Checker



Document password checker

Enter a password to check document's encryption

Password: crypt

File name: E:\Program Files\Microsoft Visual Studio\passcape\OFFICE

File format: MS Office 2007

Hash alg: SHA1

Encryption alg: AES

Status: **Matched !!!**

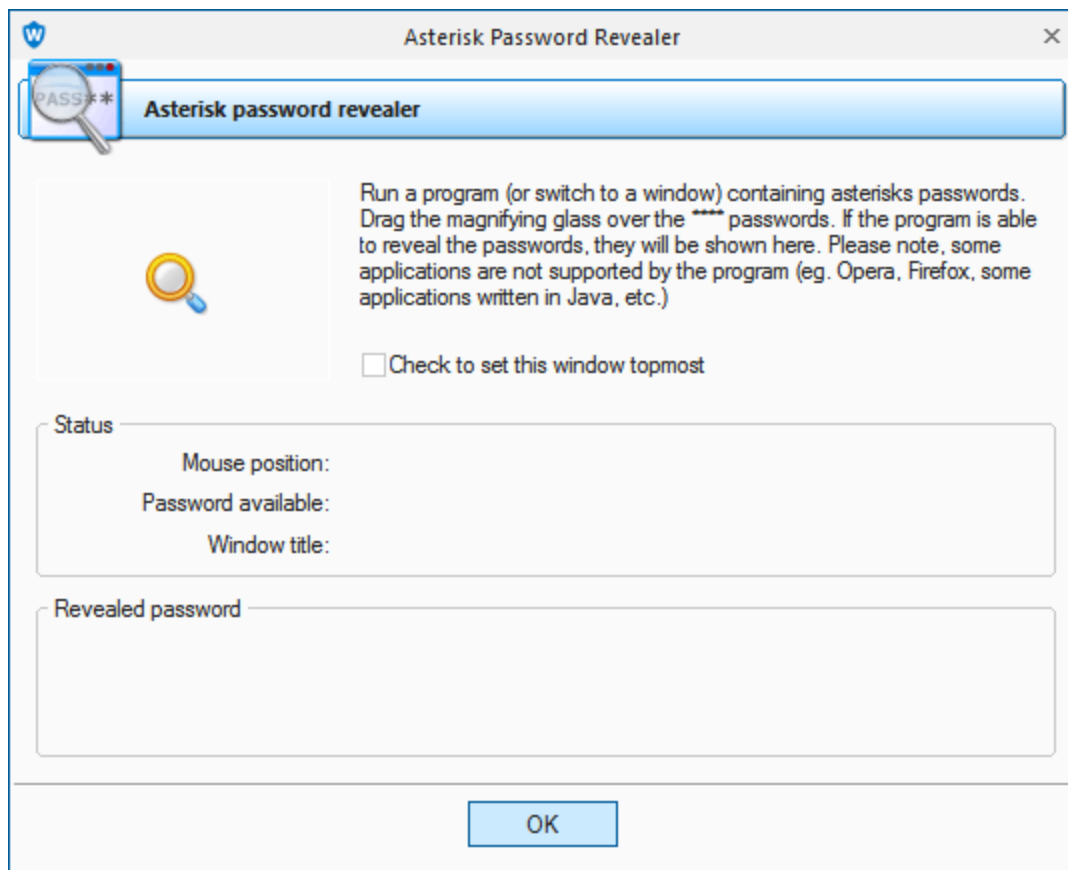
Remember Cancel

This tool allows manually checking the password of a selected document. It is often necessary for fast validating certain password-protected documents.

2.7 Utils menu

Utilities menu consists of additional add-ons aimed mainly for advanced users.

2.7.1 Asterisk Password Revealer



This tool allows to recover passwords hidden behind asterisks. It is often helpful when you need to quickly recall a **** password and don't have the necessary recovery tools handy. In order to get the *** password visible, you should have to drag the magic magnifier from the program's window to the field with asterisks.

This method works both for Windows controls and Internet Explorer windows. It has a number of restrictions though:

- Some applications have their own GUI, and therefore Asterisks Revealer may be unable to interact with such applications. Those include Opera, Mozilla, Firefox, etc.
- Some websites have a built-in protection, which hides either the garbage or the actual asterisks behind the asterisk characters * (asterisks hidden behind asterisks!).
- In some Windows system dialogs asterisks also hide the * character and not the real password.

To ensure the proper operation of this tool, you are to have the administrator privileges.

2.7.2 Wordlist tools

Rather a scant number of acceptable tools for working with specialized password dictionaries has inspired the developers of this software to create their own toolkit. With this toolkit, you can easily create new and edit existing wordlists, as well as use them with any password recovery applications.

2.7.2.1 Create new wordlist by indexing files

This tool is designed for creating a new wordlist by selecting (indexing) words from local files on your computer. For example, those could be *.html, *.xml, *.txt, *.doc files, as well as *.mdb, *.pdf, *.exe files, etc.

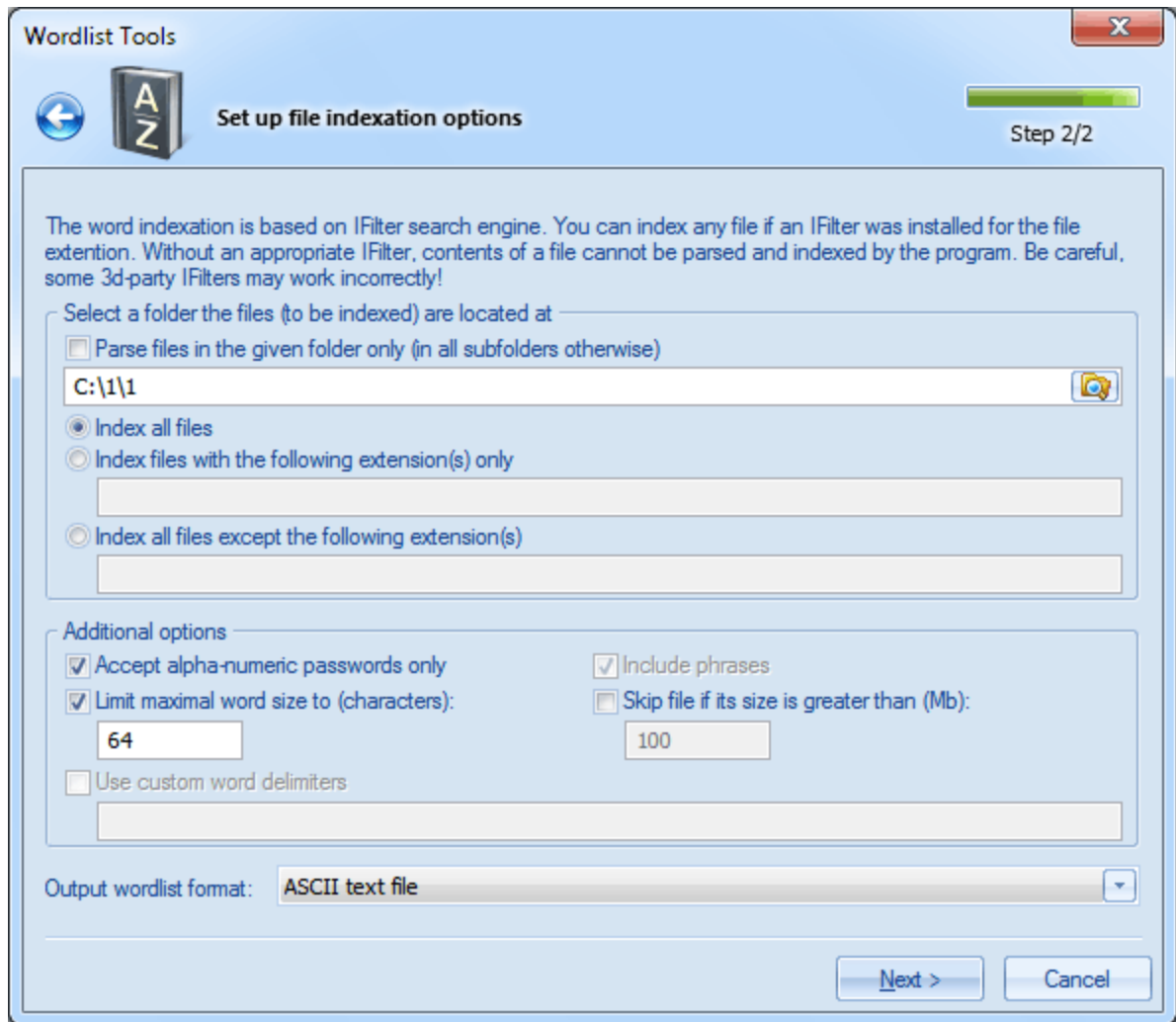
The indexing is based on the **IFilter** technology, which you can read about in [Wikipedia](https://en.wikipedia.org/wiki/IFilter). The idea of the technology, developed by Microsoft, comes down to the possibility of indexing the text of any file, which an appropriate IFilter plugin is installed for. This way, you could access the text contained, for example, inside *.exe or *.dll files, e-mail client's database, etc.

Despite the fact that numerous IFilter plugins, both commercial and free, can be found on the Internet, the program has internal support for the following types of files:

- Archives: *.zip, *.cab, *.rar
- Programs: *.exe, *.dll, *.cpl, *.ocx, *.sys, *.scr, *.drv
- Text: *.txt, *.dic
- Internet: *.html, *.htm

In other words, files with these extensions can be parsed by the program even without a single IFilter installed on the computer.

Windows 7 has an internal Windows Desktop Search tool, which has a wide range of filters for supporting the majority of popular documents. Under other operating systems, Windows Desktop Search can be installed manually; the setup file can be downloaded from the official website of Microsoft.



The configuration options for this tool consist of two groups. In the first group, you set path to the initial folder, where you need to index the files, and select a file parsing method, namely:

- Parse files in the specified folder only. If this option is not set, the program recursively analyzes all the sub-folders and files inside them.
- Index all files
- Index files with certain extensions only
- Index all files except certain extensions

File extensions are to be typed without the dot and to be separated by a comma. Example: txt,dic,xml,chm,htm

The additional options group allows to customize file parsing methods, namely:

- Accept alpha-numeric passwords only. If set, this option will skip all special characters. Only alpha-numeric passwords will be extracted.
- Include phrases. This option also allows putting phrases into destination wordlist. A phrase is considered as a string of characters (of up to 256 symbols) with at least one space character in it.
- Limit maximum word size. It is recommended to always set this option. The best maximum word length in a wordlist is 16-64 characters. Cutting the maximum length sometimes radically speeds up the file parsing process.
- Skip files with size greater than specified. Some IFilters take very long to parse large files; that can cause the program to "hang".

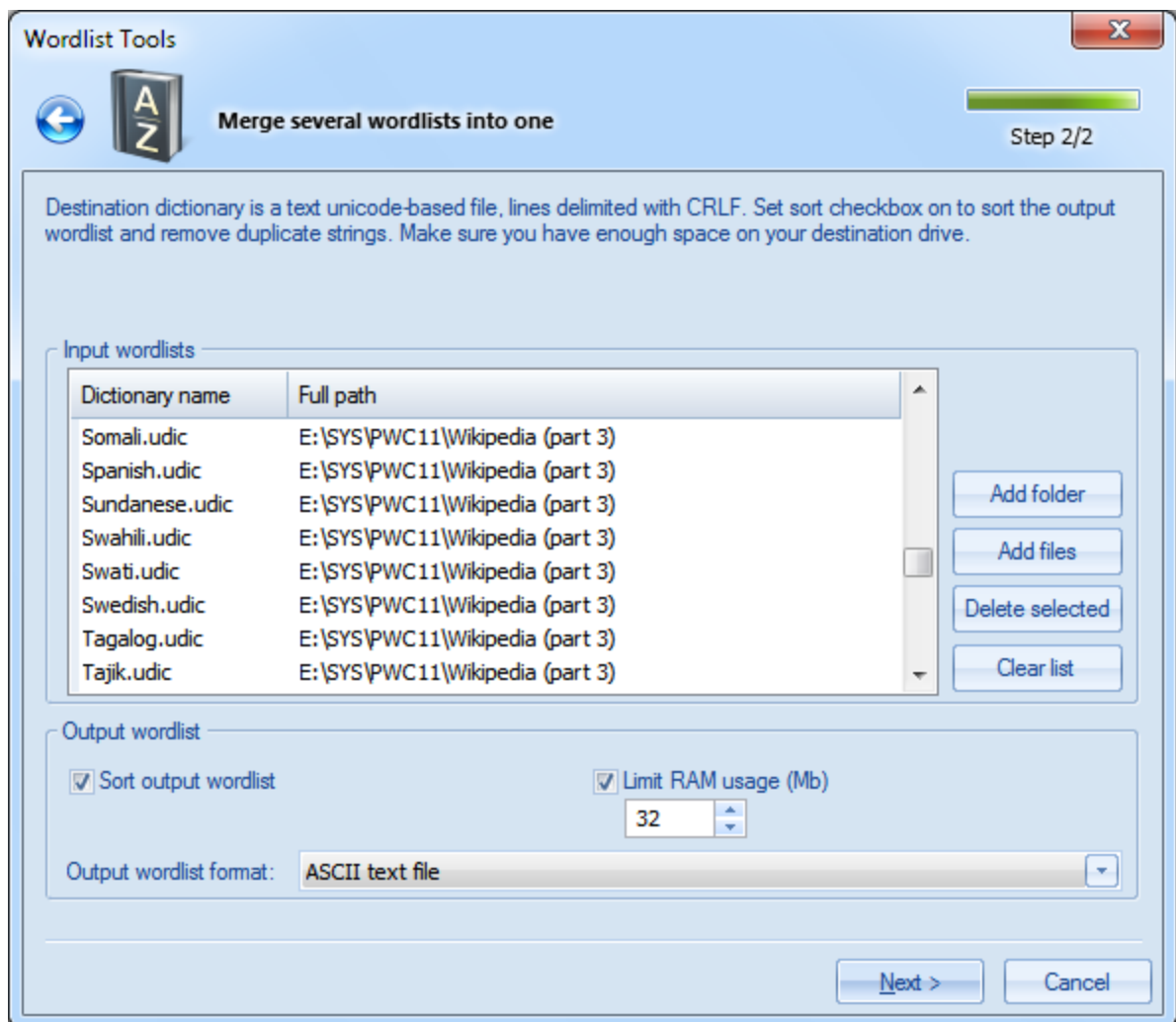
- Use custom word delimiters. You can set your own word delimiters for parsing files. For example, you could use characters like: !"#\$%&'()*+,-./:;<=>?@{}[]_ and, of course, space.

Clicking the Next> button launches the actual indexing, which may take considerable time. For the sake of speeding up the process, the list of words found during the indexing is created and maintained in the computer memory; that requires significant resources. So, if you get a runtime error of lacking the memory, try decreasing the maximum word length or limiting the number of files being parsed and then try running it over again. Once the operation is completed, and the found words are saved to disk, sort them out to get a truly valuable wordlist. Found words are guaranteed to be unique, i.e. they do not contain duplicates.

Be careful though, some third-party filters could fail to run properly and cause the application to "hang", fail or abnormally terminate. For example, some filters for parsing PDF in Windows XP are known to generate errors.

2.7.2.2 Merge wordlists

A wordlist merging tool is used when you need to combine two or more wordlists in one.

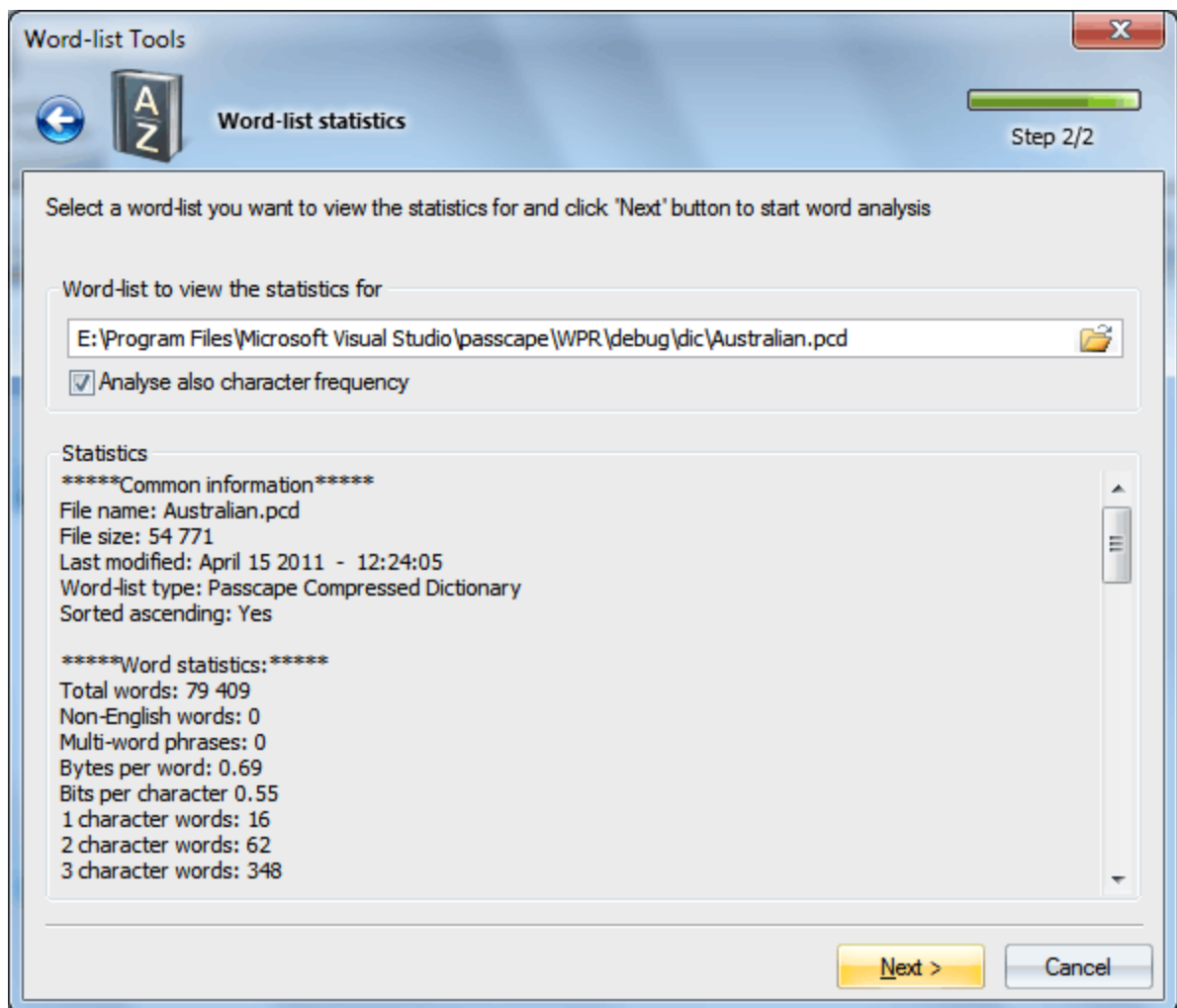


If the '**Sort output word-list**' option is not set, merging comes down to simply adding new words, without sorting or checking for duplicates. In practice, however, more common is merging with sorting; it ensures that all the words in the output wordlist are alphabetically sorted and duplicate-free.

Sorting may take a considerable amount of memory; therefore, it is appropriate to set a limit for the amount of memory that can be used by the process (at the expense of a little downgrade of the operation speed).

2.7.2.3 Wordlist statistics

Wordlist analyzer gathers and shows the following statistics:



Common information

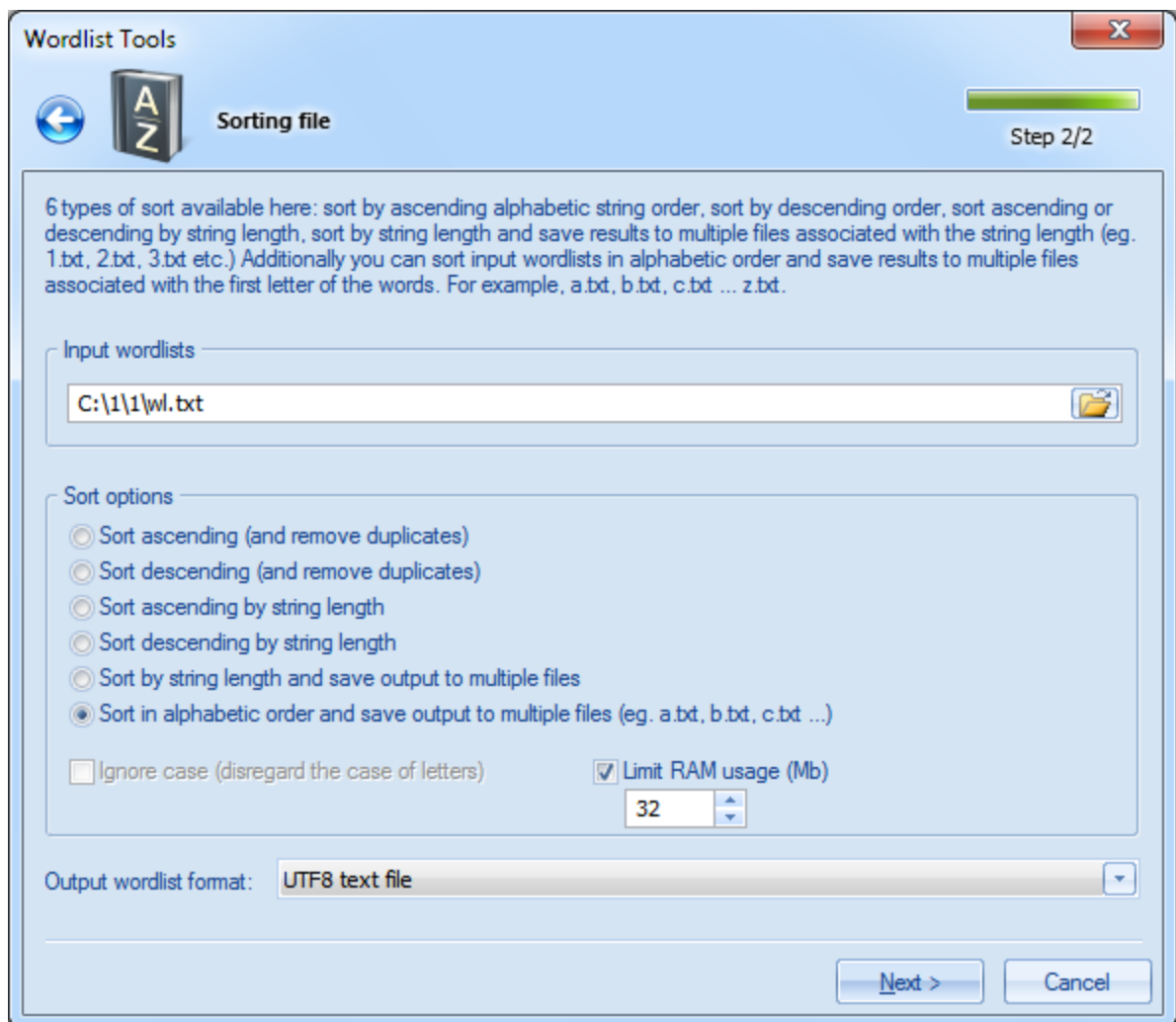
- Dictionary name
- Size in bytes
- File type
- Last modified date and time
- Whether or not alphabetically sorted (the check takes place only if the file is sorted ascending)

Word statistics

- Total words
- Non-English words
- Multi-word phrases, i.e. words separated with space
- Bytes per word, less word delimiter. Shows average wordlist compression ratio.
- Bits per character. Shows real wordlist compression ratio. For example, in UNICODE the bits per character value tends to 16 (not counting word delimiter), in regular ASCII wordlists - to 8. In certain compressed PCD wordlists one letter can be coded by less than 1 bit (see the screenshot).
- Word statistics - how many words consist of 1, 2, 3, etc. characters.
- Character frequency analysis (if the respective option is set)
- Indicates how frequently a certain character appears in a wordlist

2.7.2.4 Sort wordlist

The toolkit offers 6 modes of wordlist sorting; 4 of them are common, and 2 are extended. The common sorting modes include sorting wordlists in the alphabetical order (both ascending and descending) and by word length. When sorting alphabetically or by word length, the program automatically removes word duplicates.



Additionally, you can sort a wordlist by length and save the results in multiple files, associated with word length. For example, file 1.txt would contain 1-character words, 2.txt - two-character, etc.

The sixth sorting mode works similarly. At the same time, the program sorts the source wordlist in the alphabetical order and creates several target wordlists that correspond with the first letter of the word. For example, all words beginning with letter A would be written to file A.txt, words beginning with B - to B.txt, etc. You should keep in mind that certain words may begin with characters that cannot be used in a file name. In this case, the program automatically suggests a replacement by issuing an appropriate warning in the messages window.

If the 'Ignore case' option is set, the sorting is carried out regardless of letter case; i.e., the words *bad*, *Bad* or *BAD* are considered identical, with all the ensuing consequences.

Target wordlist name may be the same as the source; however, that is not recommended.

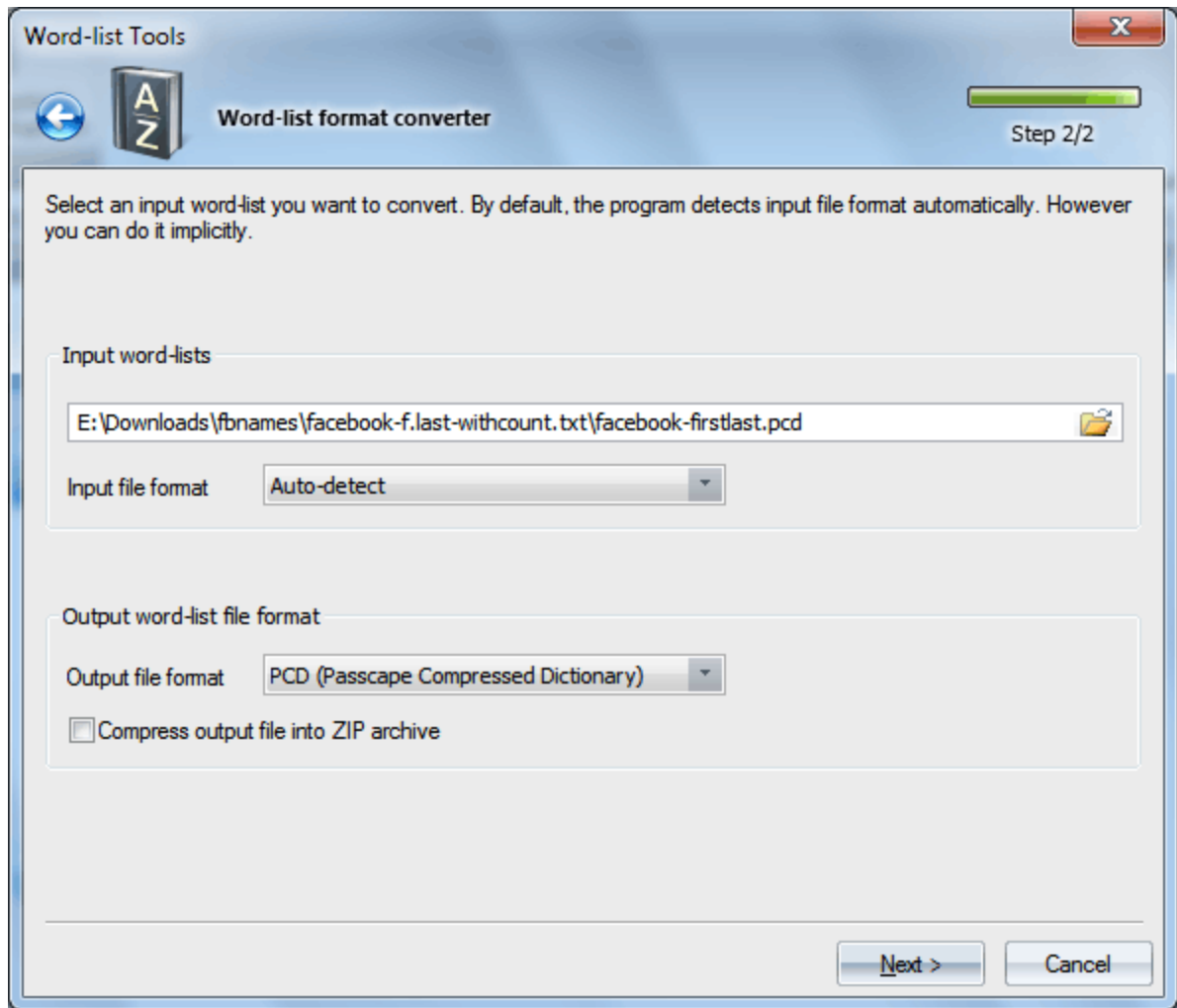
Sorting large files (supports files larger than 4 GB) involves intensive use of RAM; the amount of it can be limited by the respective option. For large files, it is not recommended to set the memory limit less than 16 MB, as that can affect the speed of sorting.

While sorting, the program may create auxiliary files in the application's temporary folder. Make sure that the disk with the temporary folder has enough room for the swap files.

2.7.2.5 Convert/compress wordlist

Numerous wordlists that can be found on the Internet are usually represented by three major formats: **ASCII**, **UTF16** (Unicode) and **UTF8**. With this tool, you can convert a wordlist from one format to another and optionally compress wordlists to ZIP files. Besides the three above mentioned formats, the program supports its own format **PCD** (Passcape Compressed Dictionary), which, in the majority of cases, gives a greater gain in size even compared to a compressed ZIP archive.

Creating large PCD files may take considerable time!



This tool's user interface is pretty easy. In the upper group, select the source wordlist and its format. By default, the program detects the format of the file automatically, but you can also specify it by hand.

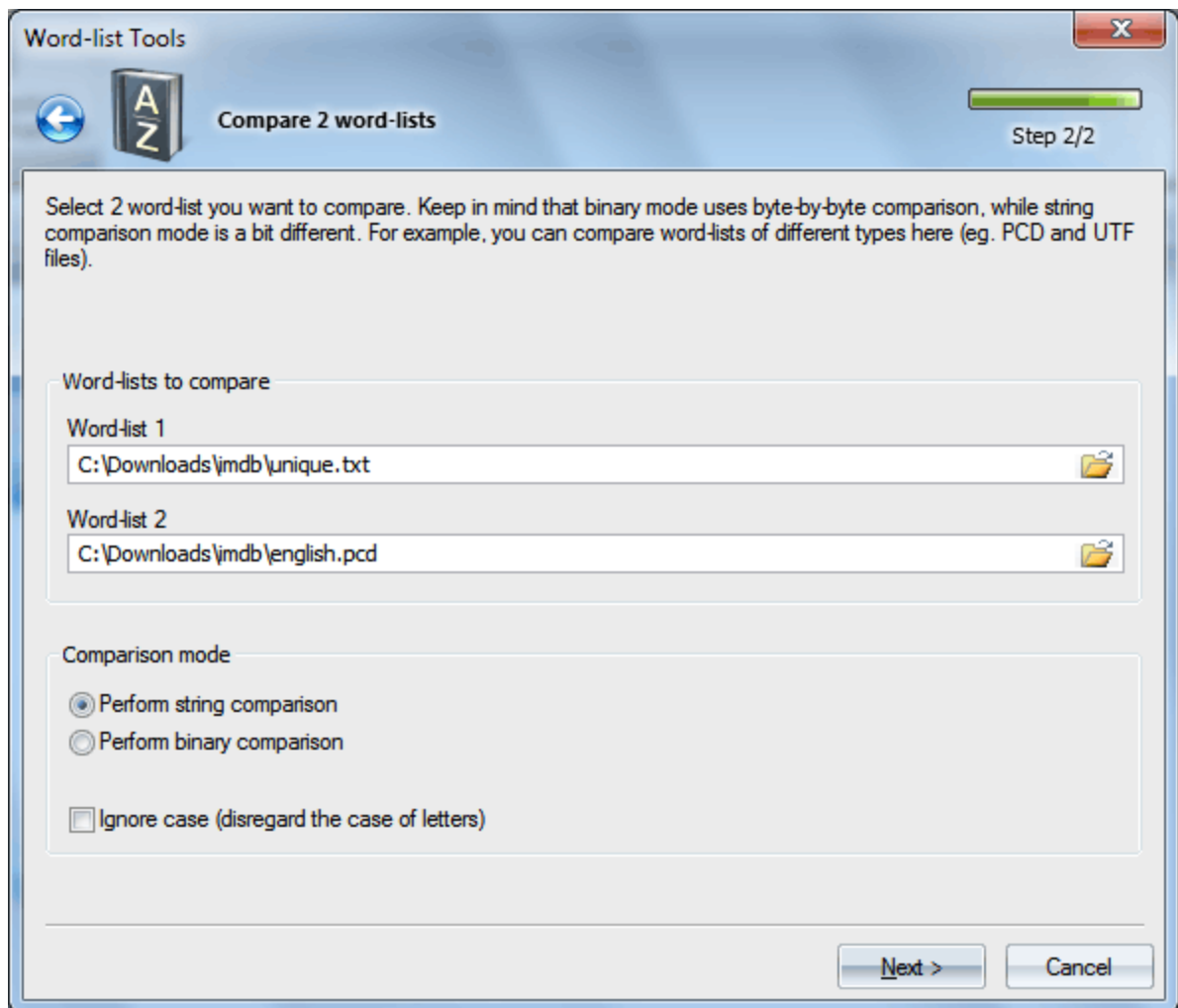
While the format of a PCD can be clearly recognized, with text files it's not that easy. As a rule, text files/wordlists in UTF16 or UTF8 begin with a two- or three-byte marker that describes the type of the file. However, there are Unicode wordlists that do not have any identifying markers. For such "hard" cases, you need to set the type of the source file manually. Otherwise, the program, being unable to see an appropriate identifier, improperly recognizes the file as ASCII.

Target wordlist, similarly, is defined by one of the four above mentioned formats. With the compression option set, the program additionally compresses the file to a ZIP archive.

Target wordlist name may be the same as the source; however, that is not recommended.

2.7.2.6 Compare wordlists

Sometimes, it is necessary to determine whether two wordlists are identical. That is what the wordlist comparison tool for.



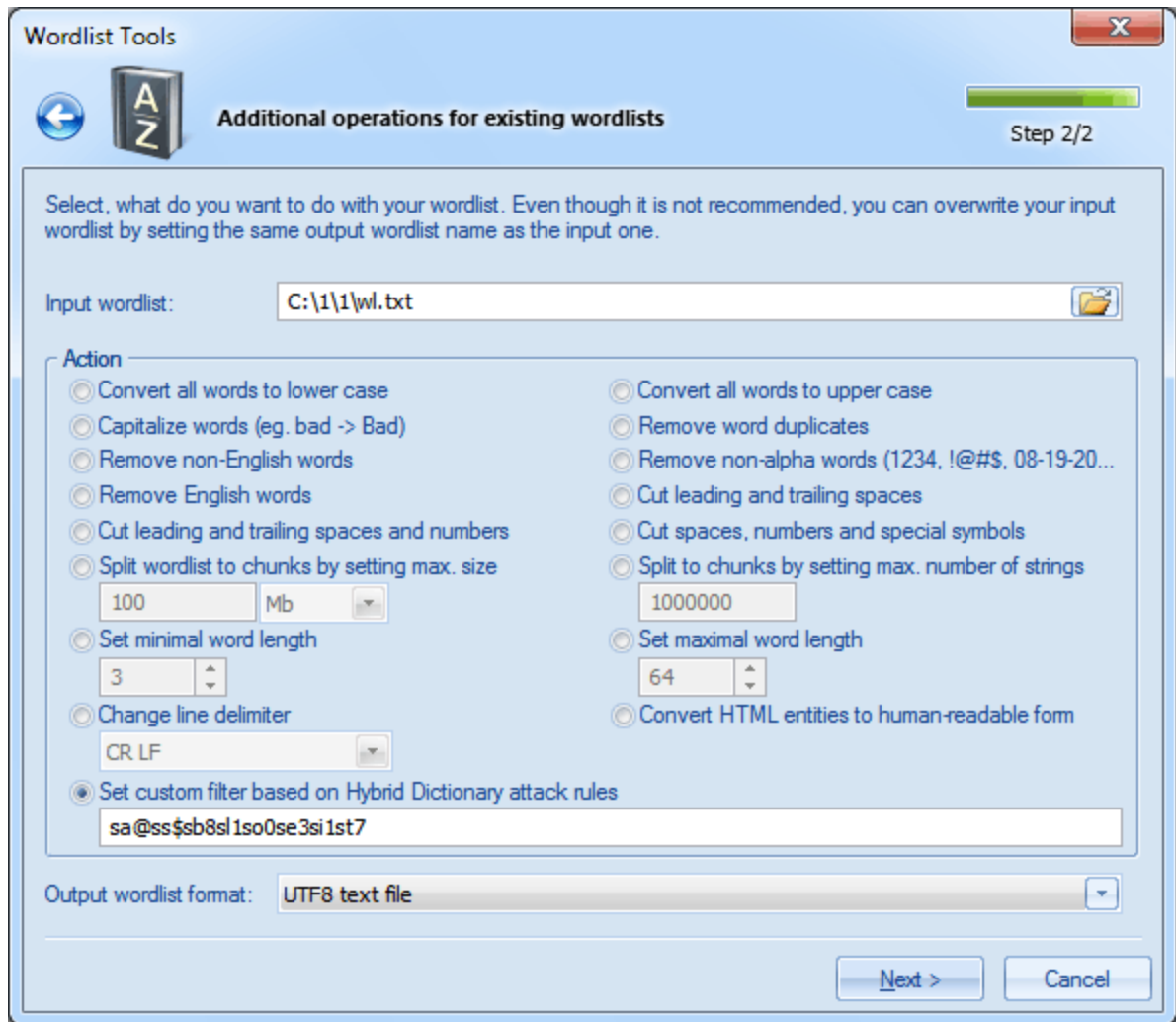
This tool offers two operating modes:

1. Binary comparison, for comparing files by-byte
2. String comparison, which compares words rather than bytes. This mode is noteworthy for its ability to compare wordlists of different formats. For example, PCD and UNICODE, or UNICODE and ASCII.

If the ignore case option is set (string comparison mode only), then, for example, the words *bad* and *Bad* will be considered identical.

2.7.2.7 Additional operations

The additional tools are designed primarily for editing and tuning up existing wordlists.



The tools include the following operations:

- Convert all words in wordlist to lower case. For example, BAD -> bad.
- Convert all words to upper case. For example, Bad -> BAD.
- Capitalize words - upper-case first letter, lower-case all others. For example, bad -> Bad.
- Remove word duplicates.
- Remove non-English words.
- Remove words that entirely consist of numbers and/or special characters. For example, 12345, !@#\$, 08-19-10, etc.
- Remove English words.
- Cut/remove leading and trailing spaces.
- Cut/remove leading and trailing spaces and numbers.
- Cut/remove leading and trailing spaces, numbers and special characters.
- Split wordlist to chunks by maximum size.
- Split wordlist to chunks by maximum word count.
- Remove words of length smaller than specified.
- Remove words of length greater than specified.
- Change line delimiter.
- Convert HTML entities to human-readable form. For example, **&** -> **&**, **@** -> **@**
- Set your own filter based on [Hybrid Dictionary rules](#)

For source wordlist, the program takes ASCII, UTF16, UTF8 and PCD files. Target wordlist can be a text of ASCII, UTF16 or UTF8.

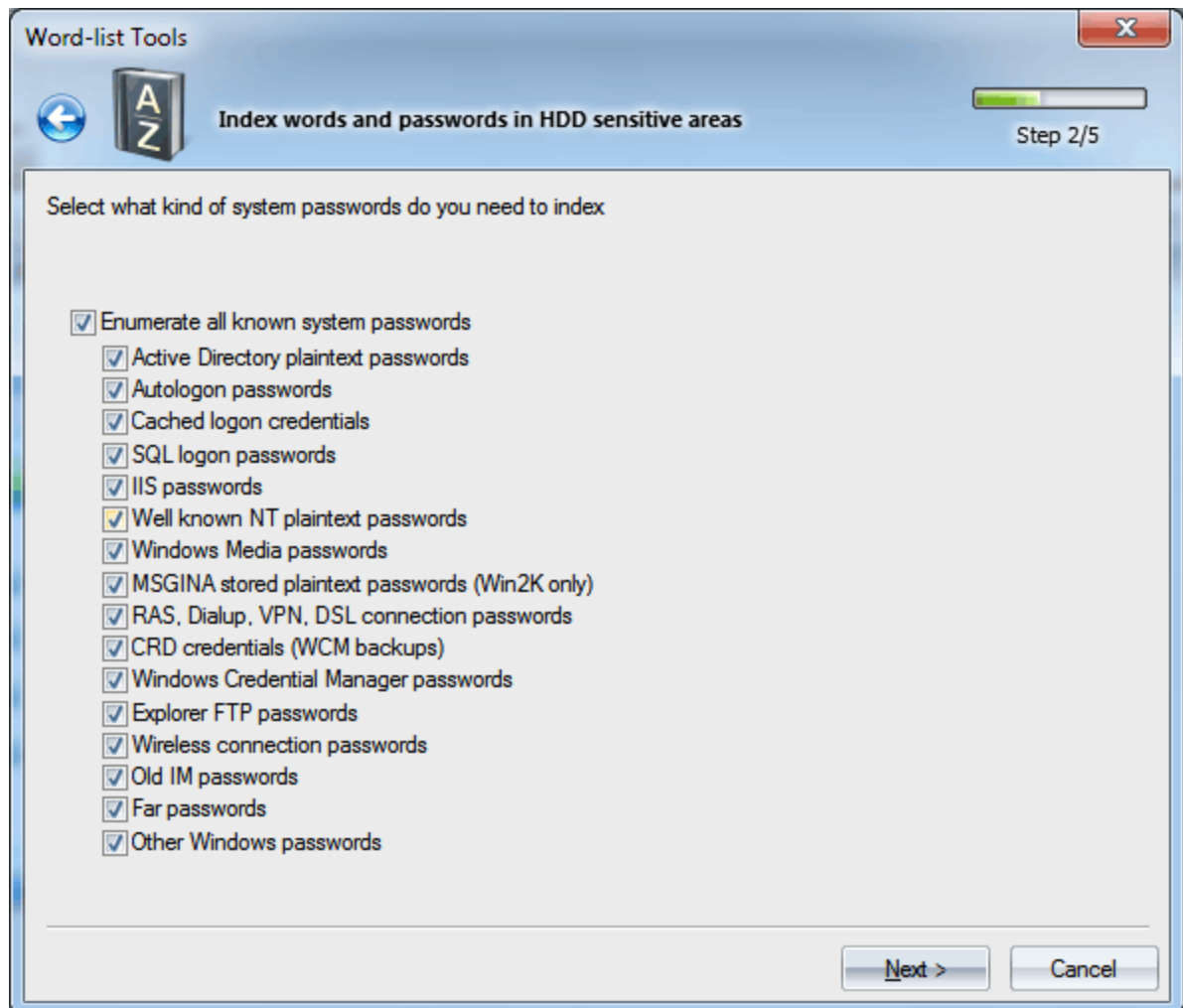
Source and target wordlist name may be identical (not recommended). In this case, the source wordlist will be overwritten.

2.7.2.8 Index HDD sensitive areas

Creating a wordlist by indexing the hard disk (followed by an attack using this wordlist) is a pretty useful and sophisticated tool for decrypting passwords to local Windows accounts.

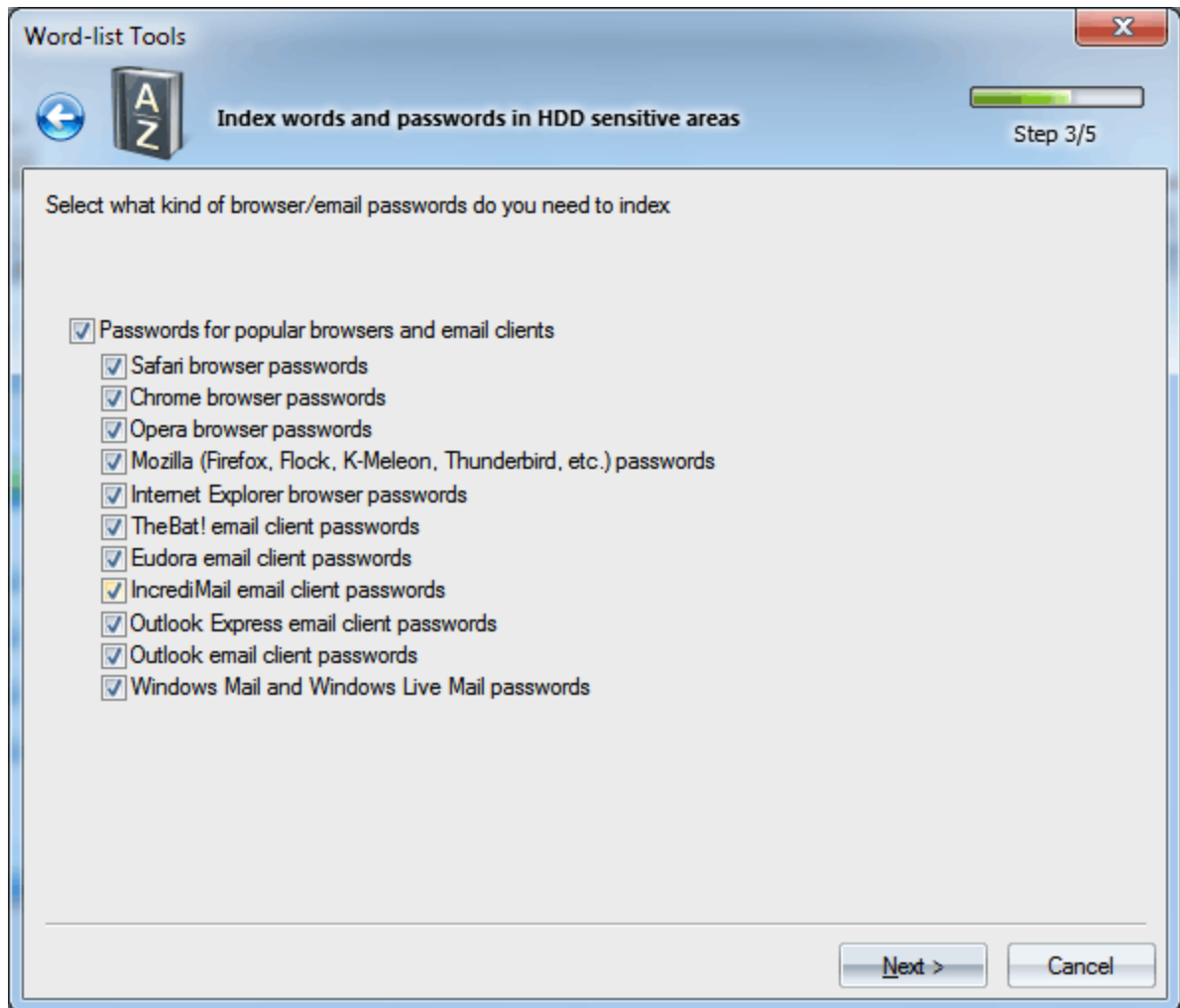
Often users, instinctively, set same passwords to their Windows accounts, Web, ICQ, etc. The idea of this tool is to create a wordlist of all found formerly used passwords, user's messages, words from recently opened files, etc. and then use the accumulated wordlist for looking up passwords to the local accounts. This technique is engaged in the Artificial Intelligence attack.

The configuration of the tool conventionally consists of four parts:

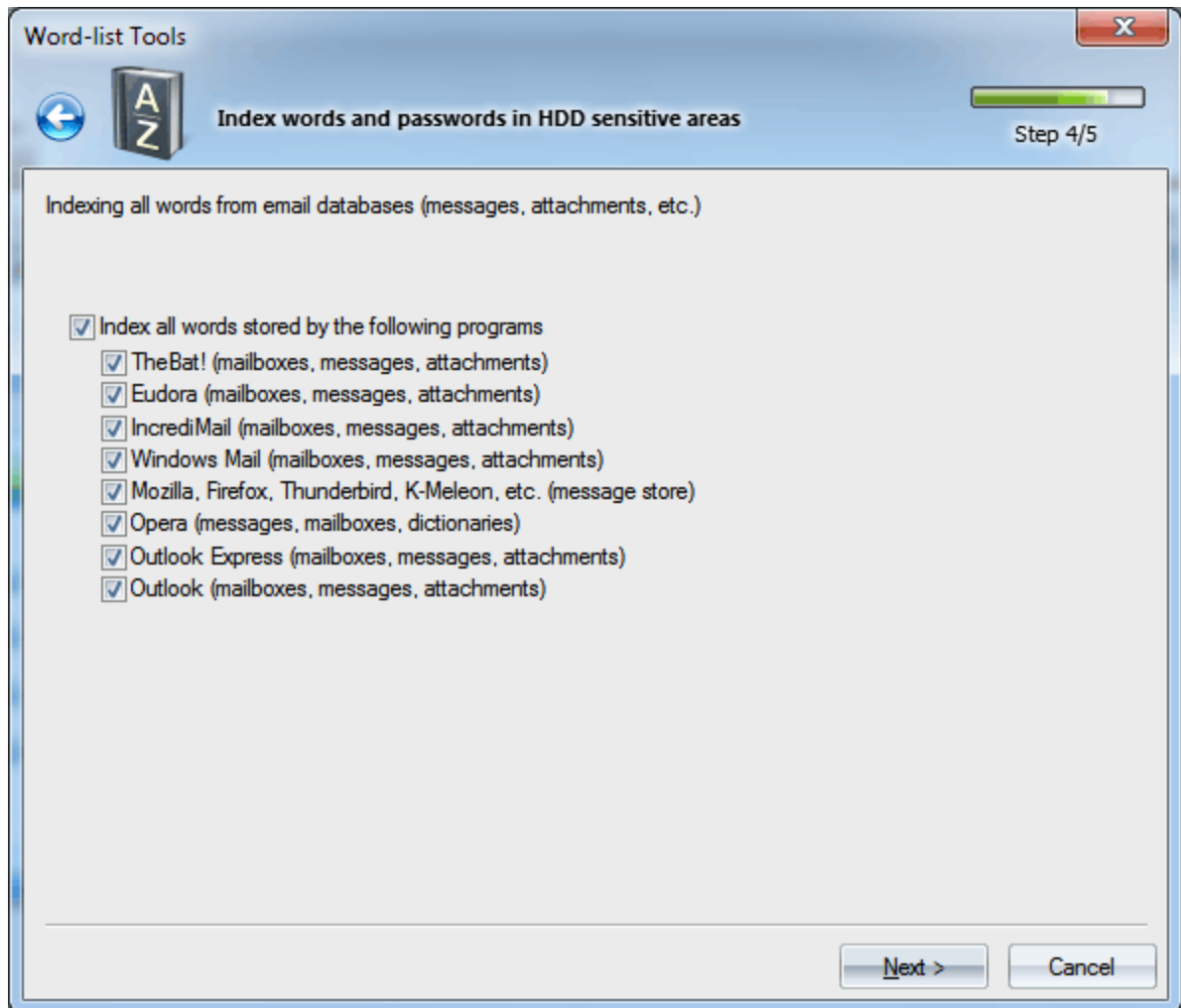


First, select the system modules to be used when generating the wordlist. These modules find and index the following types of passwords on your computer's hard disk: Active Directory plaintext passwords, startup passwords and cached startup passwords, SQL, IIS, Windows Media, Win2K text

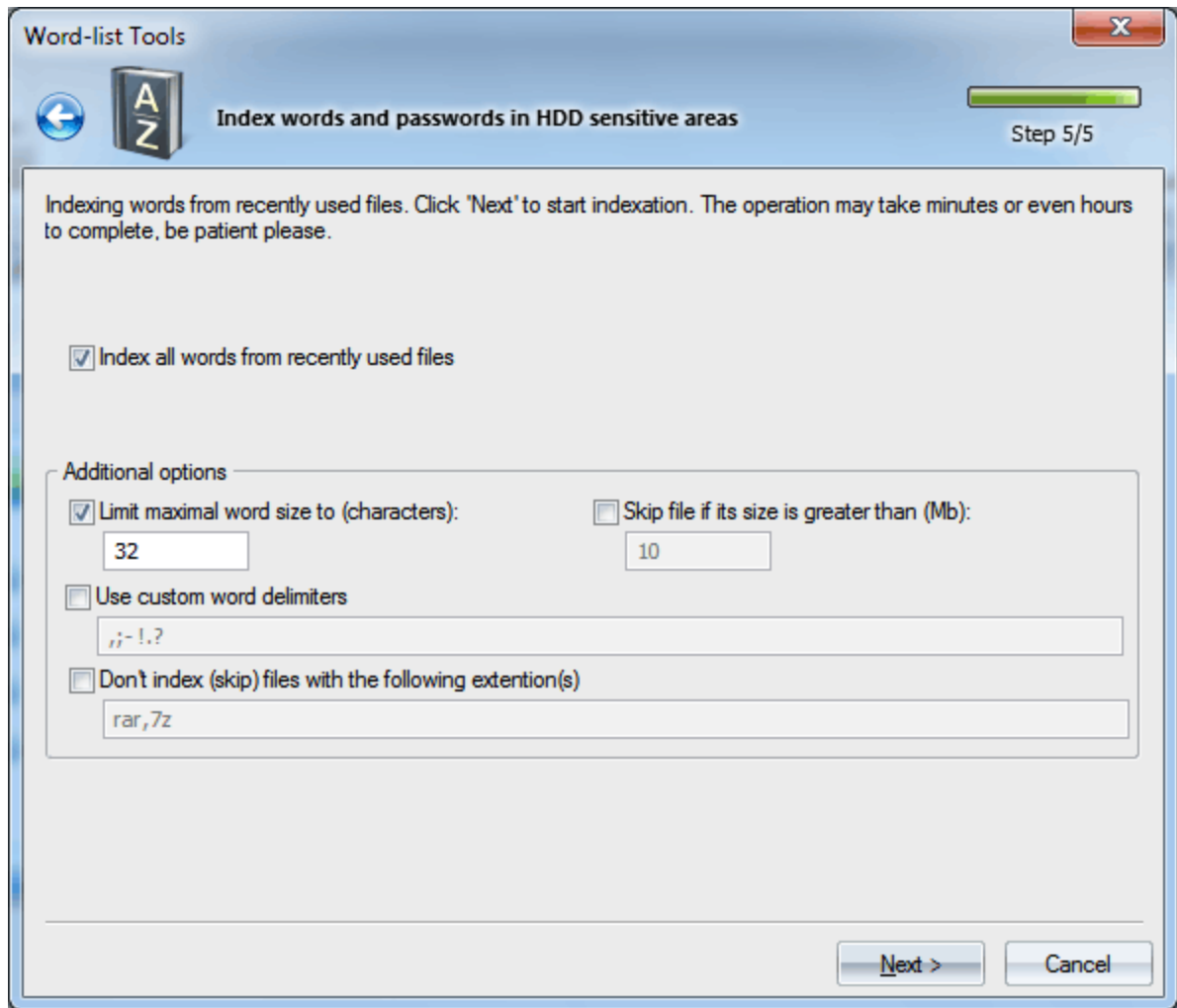
passwords, RAS, Dialup, VPN, DSL, WEP, WPA, FTP connection passwords, Windows Credential Manager passwords, Instant Messengers, etc. passwords.



In the second part of the configuration, select the browsers and e-mail clients, passwords from which are also to be found and added to the wordlist being created. The program supports the following major web browsers: Safari, Chrome, Opera, Mozilla-based browsers (Firefox, K-Meleon, Flock, etc.), Internet Explorer. E-mail clients are represented by: TheBat!, Eudora, IncrediMail, Outlook Express, Outlook, Windows Mail, and Windows Live Mail.



Besides merely gathering passwords, the program can index user's e-mail communication, scanning all found mailboxes, messages, attachments, etc. The hard disk search is performed for all accounts in a system, so the process may take considerable time, especially when the system hosts many users or when e-mail clients' databases are large. One way or the other, you can enable/disable each module individually.



Finally, in the last dialog, you can set the options for indexing words from all files, recently opened by current user. Available options include:

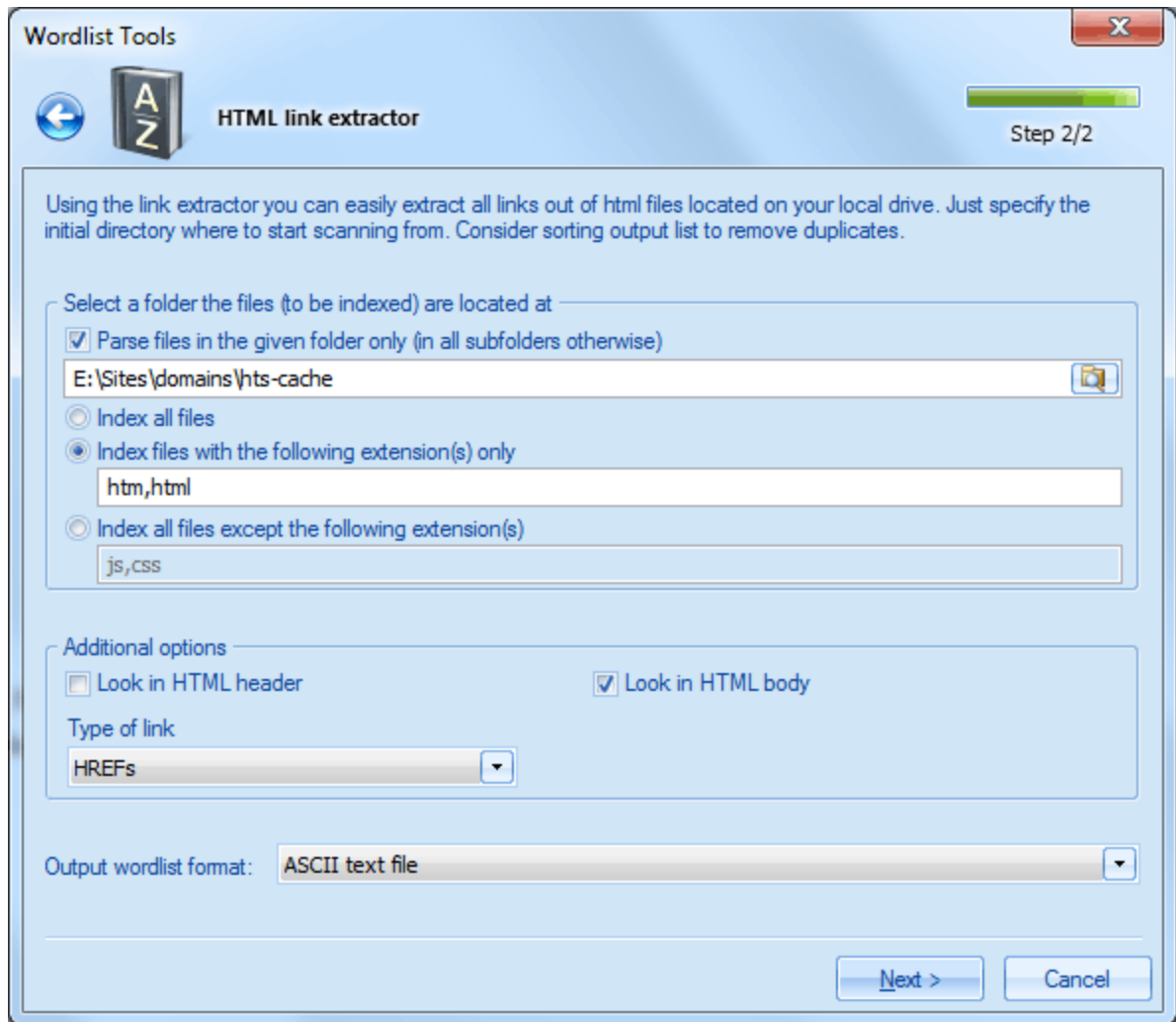
- Set the maximum length of words that can be added to the wordlist. All words with length greater than the specified limit will be skipped.
- Skip files with size greater than specified. The size is specified in MB.
- Use custom word delimiters. By default, word delimiters are all non-alphabetic characters.
- Do not index files with specified extensions. Use this option to skip files that you consider unnecessary.

Clicking the **Next>** button starts the indexing process.

Keep in mind that it can take considerable time!

2.7.2.9 Extract HTML links

This tool is designed for extracting HTML hyperlinks from HTML files.



The configuration options for this tool consist of two groups. In the first group, you should set a path to the initial folder, where the HTML files are located, and select a file parsing method, namely:

- Parse files in the specified folder only. If this option is not set, the program recursively analyzes all the sub-folders and files inside them.
- Index all files
- Index files with certain extensions only
- Index all files except certain extensions

By default, the tool checks *.htm and *.html files only.

The additional options group allows to set the type of links, as well as where to look for them:

- Look in HTML header
- Look in HTML body
- Look links in HREF tag, SRC tag or in both tags.

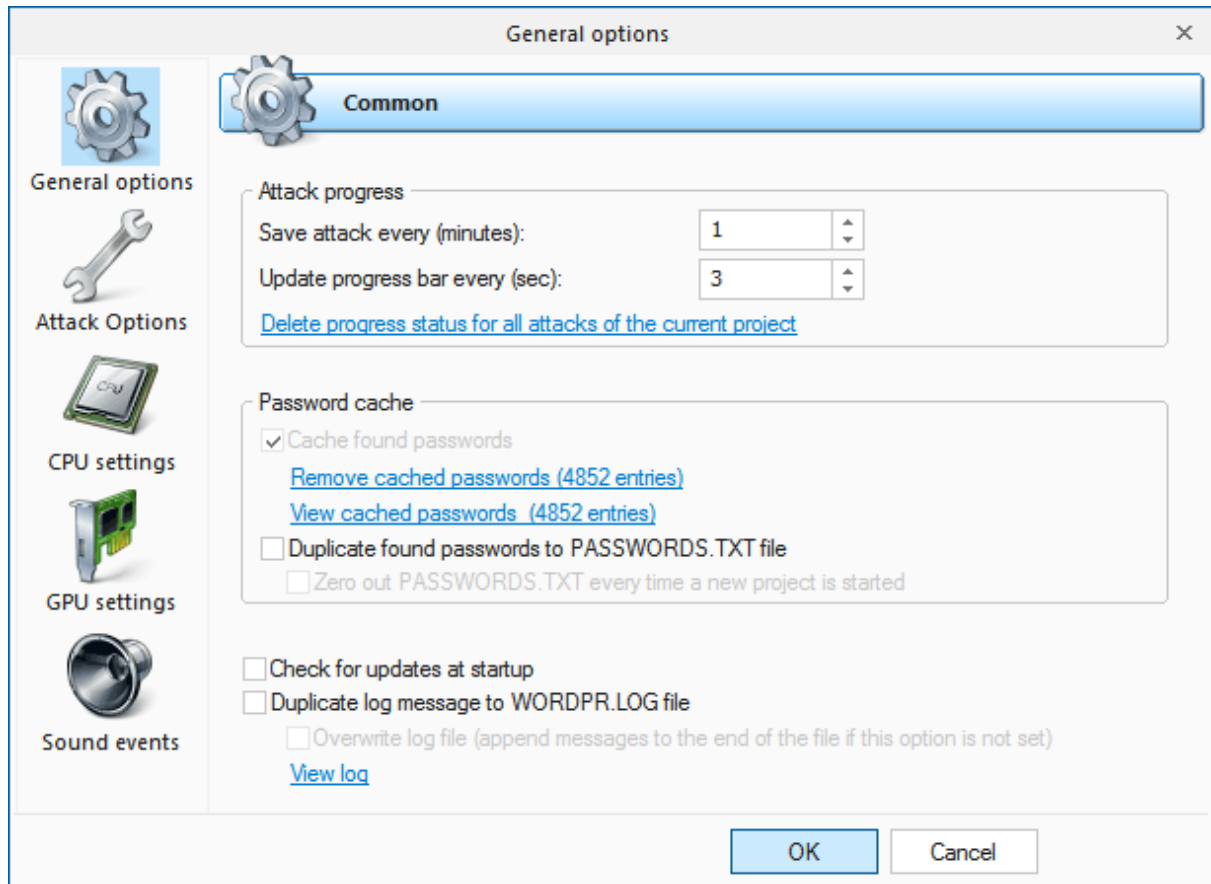
Clicking the **Next>** button launches the search, which may take considerable time. Once the operation is completed, and the found links are saved to disk, consider sort them out to get ride of duplicates.

2.8 Settings menu

2.8.1 General settings

The general settings are divided into five parts.

2.8.1.1 General options



Attack progress

The first group of settings allows setting the save and update intervals for the current state of an attack. By default, an attack saves its state every 5 minutes (further on, you can resume the attack from the last saved point) and updates the screen every 3 seconds.

Password Cache

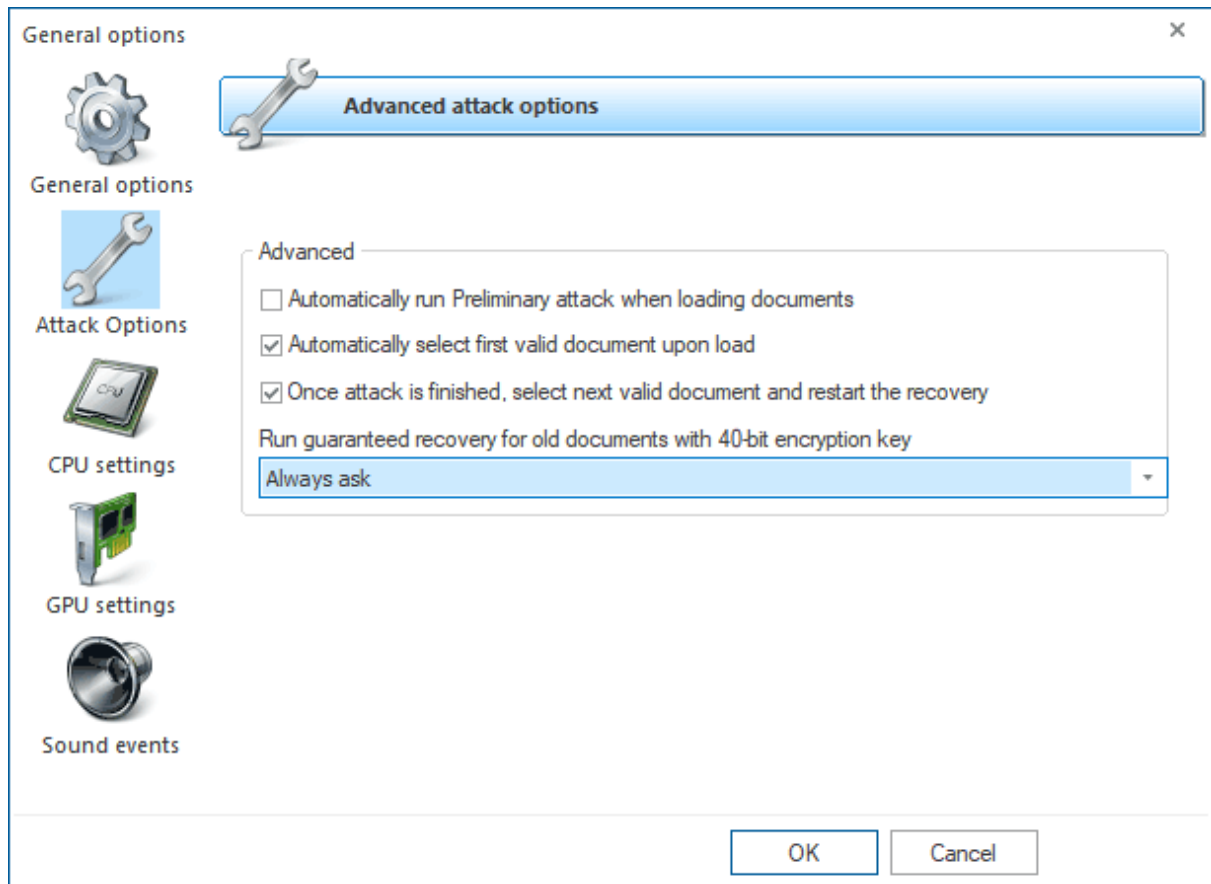
All passwords found by the program are cached by default. A very helpful thing that is engaged in many subsystems. For example, in the Artificial Intelligence or Preliminary attack. Deleting password cache is recommended in cases of the extreme need only. For example, the cached passwords exceeded ten thousand. In this case, the search speed for some attacks can drop significantly. Additionally, you can duplicate found passwords to text file. So even if the program fail unexpectedly or in case of sudden power failure, the found passwords guaranteed to be written to file.

Check for updates at startup - check if an update is available every time the program starts. The option works only if PC is connected to internet.

Duplicate log messages to ppointpr.log file - this option when set, writes all messages the log window holds to PPOINTPR.LOG file. It can be helpful when the program stalls or works unstable. PPOINTPR.LOG is located in the program's installation directory.

Overwrite log file - overwrite the log file every time the program starts. Otherwise new messages will be appended to the end of the log file.

2.8.1.2 Attack options



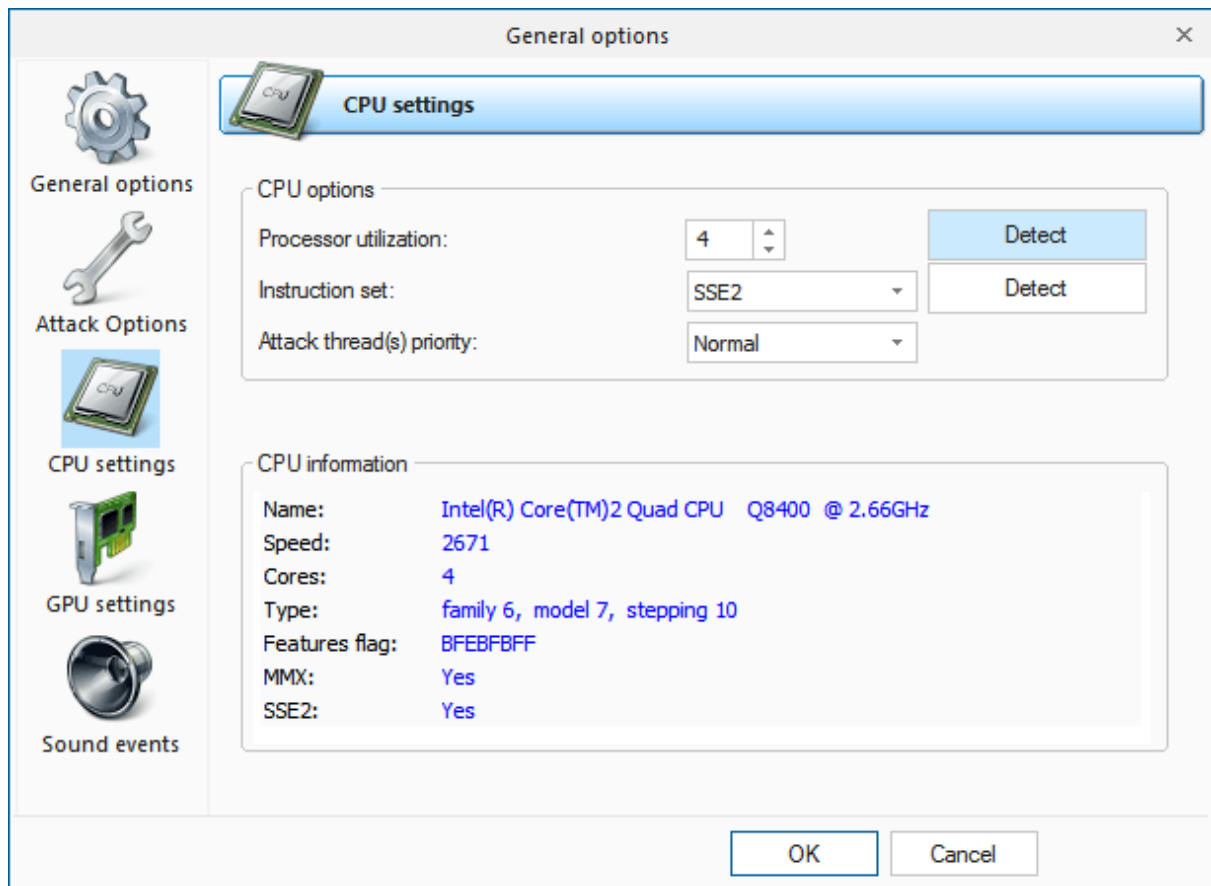
Advanced

- *'Automatically run preliminary attack upon import'*. Automatically run Artificial Intelligence attack every time a new document is loaded. This attack can reveal particularly weak passwords in a matter of minutes.
- *'Automatically select first valid document upon load'*. Automatically select first valid document for further analysis when loading documents into the program.
- *'Once attack is finished, select next valid document and restart the recovery'*. With this option set, once the selected attack is finished, regardless of its success, the program will select next valid document and automatically restarts the attack.
- Run guaranteed recovery for old documents with 40-bit encryption key - once the program detects a weak 40-bit encryption it behaves exactly as defined using this option
 - Always runs guaranteed recovery - run password collision search. All MS Office documents with 40-bit encryption can be cracked using password collision search. Even though it may take quite

some time (on average, half of an hour using a single NVidia RTX 2060 GPU), the program should find an encryption password for the document. Not necessarily the original but one that behaves exactly like the original one.

- Never run guaranteed recovery - do not run password collision search but a selected attack instead.
- Always ask - always ask what attack to launch, a regular or the guaranteed one.

2.8.1.3 CPU settings

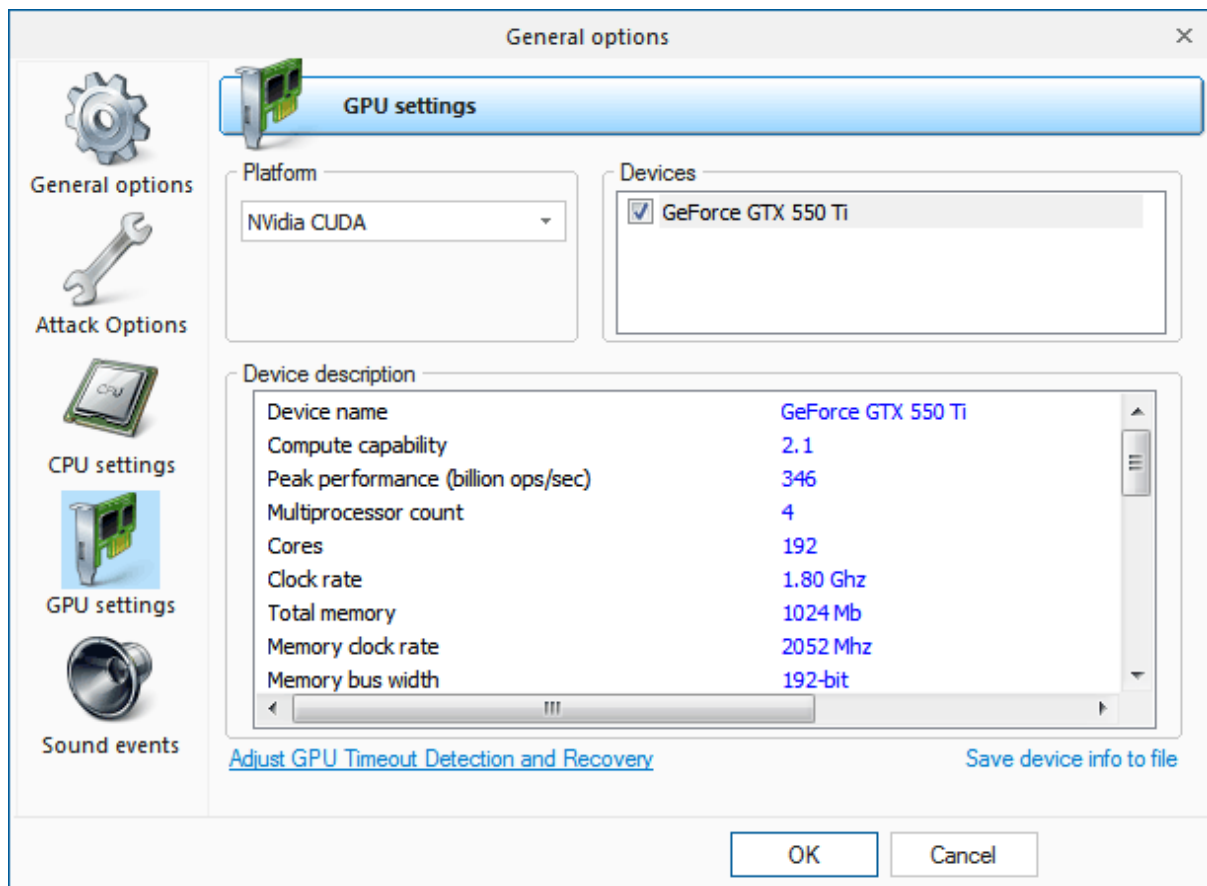


Since the majority of the attacks support multithreading, you can manually set the number of search threads to be run simultaneously. In the majority of cases, it should match the number of cores you've got in your CPU. However, if you are searching for passwords using GPU, that value should be less.

Password lookup algorithms in the program are optimized for three CPU architectures: X86, MMX and SSE2. Naturally, on CPU that support newer architecture, the search would run faster.

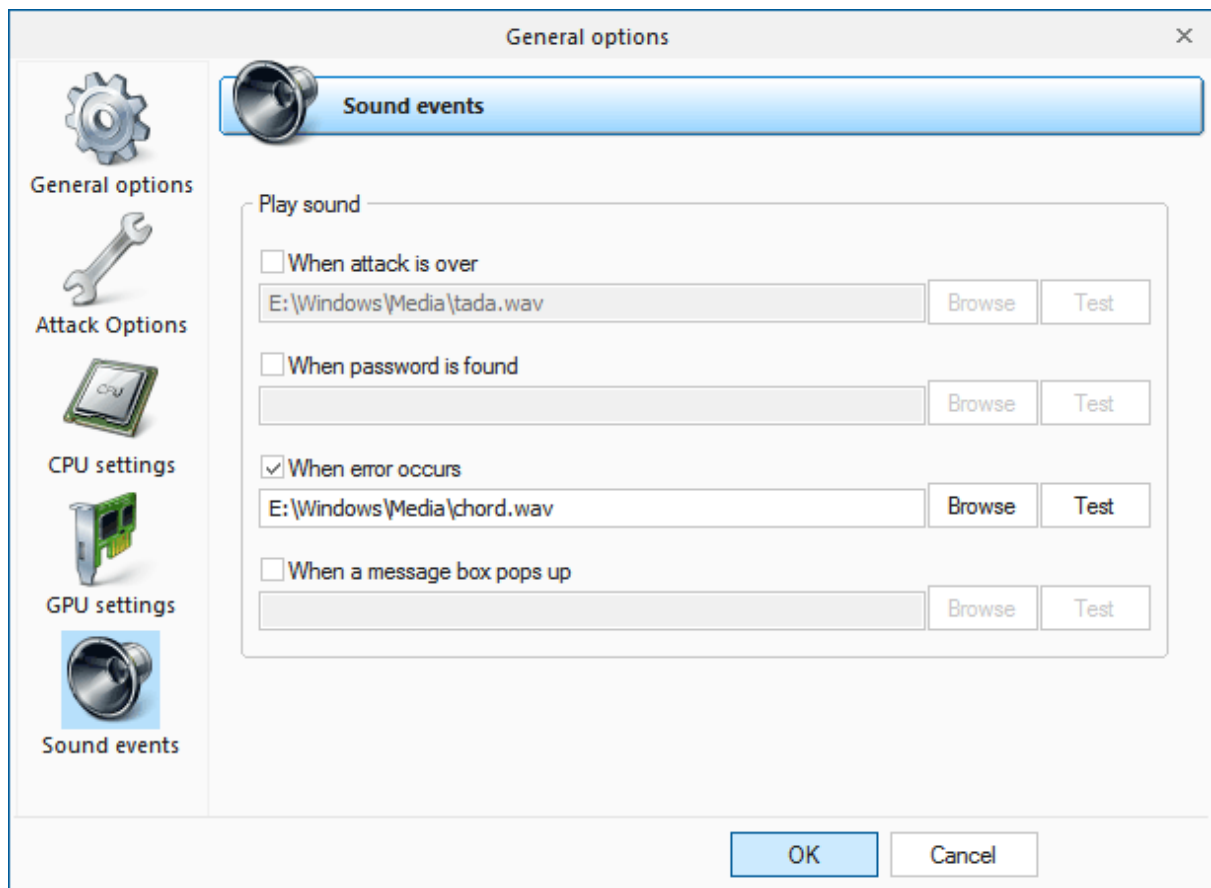
It is not recommended to set the attack priority above normal; otherwise, you may observe a considerable reduction of performance of the entire system.

2.8.1.4 GPU settings



Before launching a GPU attack, make sure to select it in the application's general settings. Simply check on the box against the respective GPU name. All the basic features of the device are shown in the table below. The software supports up to 255 devices.

2.8.1.5 Sound notifications

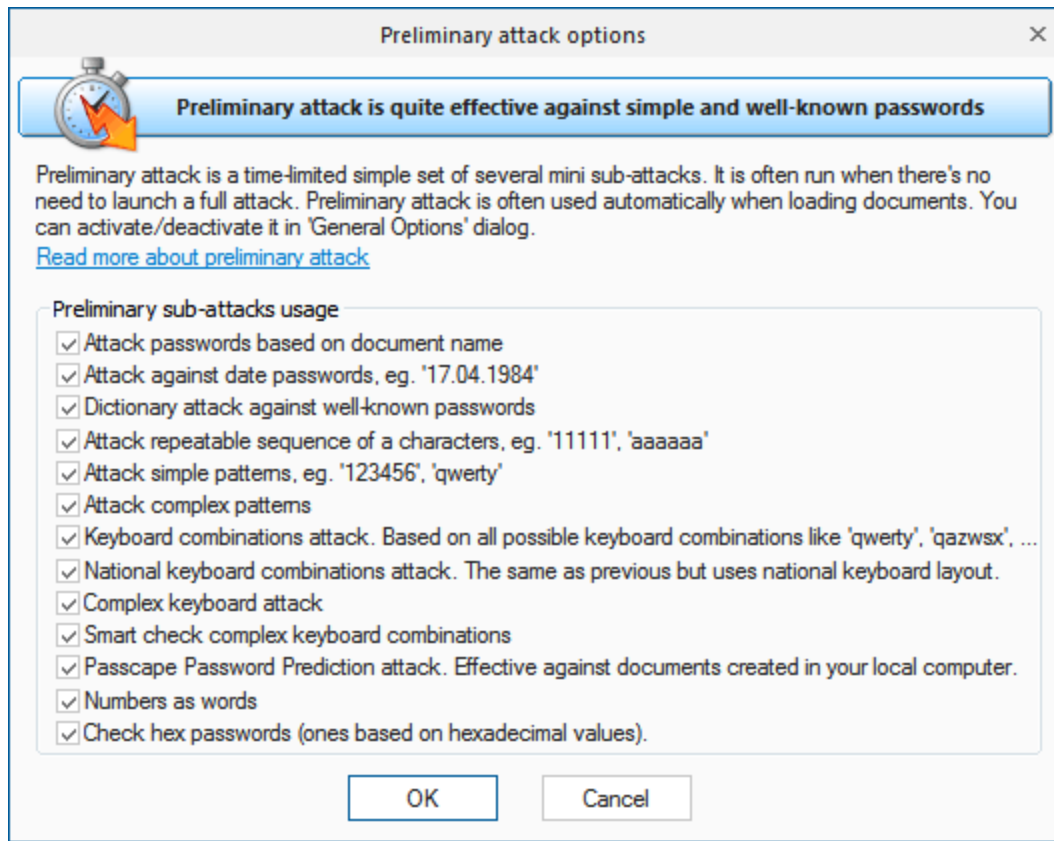


The software allows setting up sound notifications for certain events. For example, when the attack is over or when a password is found.

2.8.2 Attack Settings

2.8.2.1 Preliminary attack

Preliminary attack (developed in Passcape) is quite effective against short, simple, dictionary, repetitive, keyboard, etc. passwords and consists of several mini-attacks. Each mini-attack can be enabled/disabled individually.



Preliminary attack run about 5-6 minutes or even faster. It consists of at least the following sub-attacks:

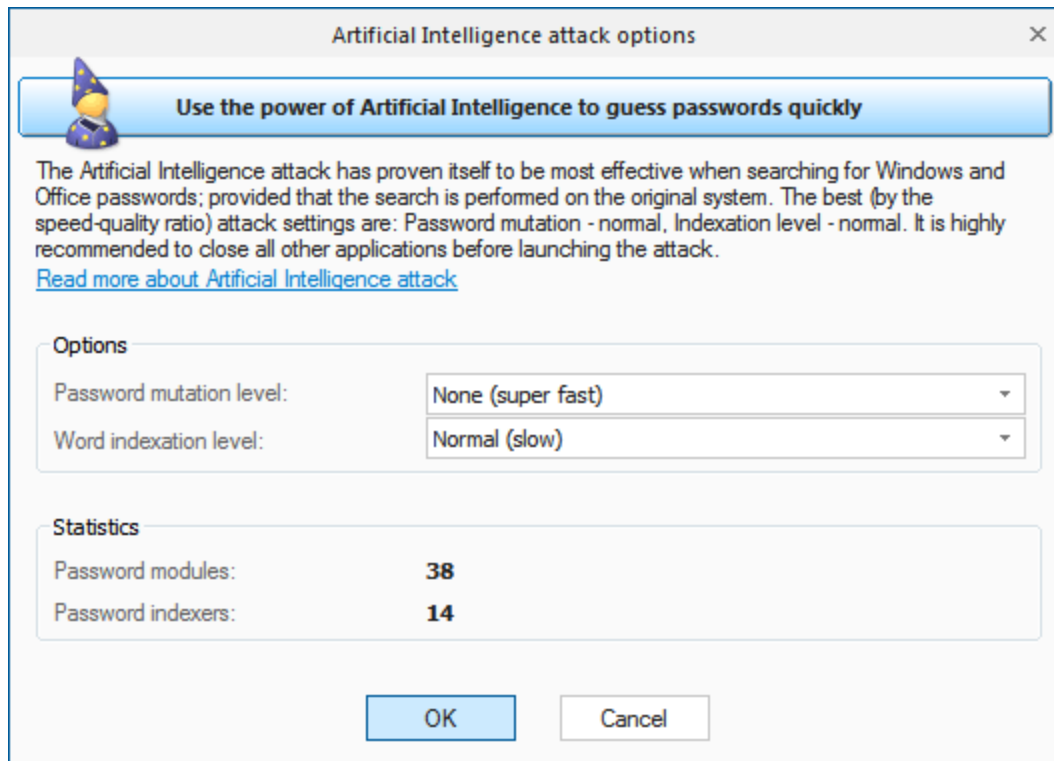
- Attack against document name. Verify various combinations of the document name.
- Dates attack. Checks passwords that were based on date. For example, 12031994.
- Simple dictionary attack. Fast check the password by verifying all words from a given dictionary.
- Attack on repeatables. Checking passwords as a repeatable sequence of a character. Eg. '1111111' or 'xxxxxxx'.
- Attack on simple patterns, like '123456' or 'qwerty'.
- Attack complex patterns, like 'qwerty123' or 'qaz666'.
- Keyboard attack checks for keyboard passwords and all possible combinations. Eg. 'qwer', 'qazwsx', 'asdzxc', etc.
- National keyboard attack is pretty much the same as the previous one, but performs password search against national passwords based on national keyboard combinations.
- Complex keyboard attack is the same as previous 2 attacks, for compound keyboard patterns.
- Smart keyboard attack checks complicated keyboard combinations.
- Passcape Password Prediction attack is the most complicated and state-of-art password prediction tool.
- Attack passwords based on numbers (as words).
- Check short hex passwords.

2.8.2.2 Artificial intelligence attack

Artificial Intelligence Attack is a new type of recovery developed in our company. It is based upon a social engineering method and has never been implemented in password recovery applications yet.

This one is mostly used when the password was created on the local computer. Artificial Intelligence attack scans the local computer, indexes and creates the list of found words and passwords, analyzes them, upon the results of the analysis produces user's preferences, performs the mutation of the found words and, based on all that, attempts to recover the original passwords.

This attack allows, without resort to time-consuming and costly computations, to almost instantly recover certain passwords. The basic idea behind the Artificial Intelligence attack is that an average user very often chooses similar words and word combinations or follows the same password generation rule when creating one's passwords. With that in mind, we could attempt to figure that rule out and guess the original password.



Although this sounds somewhat abstractive, in the reality the attack clearly splits into four successive steps.

1. Initiating the collection of private data. Here comes into action the password retrieval and indexation module, which looks for all available and hidden in the system passwords entered by user at any moment of time. Those include network access passwords, ICQ, email, FTP, Windows account passwords, server passwords, LSA Secrets, etc.
2. Launches the data collection and indexation module. During the execution of this step, we analyze the activity of the user (or all users, if the indexation module selected is different than Light) in the system. Next, basing upon that, we generate the list of words - potential passwords selected from the text files, archives, internet browsers' history, email correspondence, etc.
3. Includes the semantic analysis module for the database of found passwords and the list of potential passwords.
4. On the final stage, the data analysis module will perform the mutation of the words and attempt to pick the passwords.

In the beginning of the attack, the program will search the system for all passwords it knows of. For that purpose, there are currently 38 mini modules for decrypting system, mail, browser, messenger, archive and other passwords. Then there goes the file and data indexation, along the course of which the

program generates a potential attack dictionary. The third module breaks the passwords and words into pieces, out of which in the last module it will assemble new combinations for picking and guessing the original password.

Naturally, the more complex is the mutation and indexation level, the more efficient will be the search. However, reaching the topmost indexation and analysis level may take hours and even days, depending on the speed of the password validation algorithm and the number of users in the system.

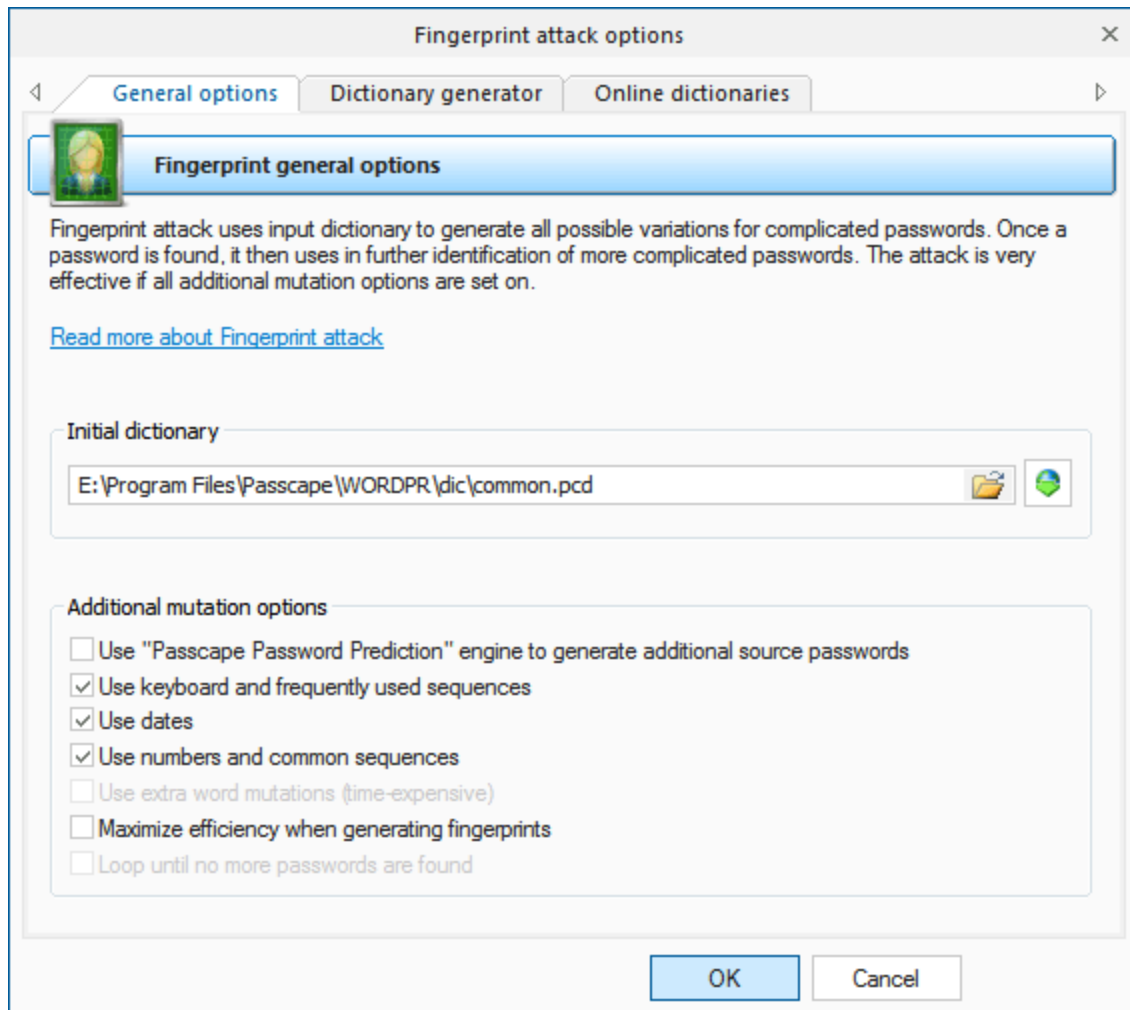
The Artificial Intelligence attack has proven itself to be most effective when the search is performed on the original system. Only two options are available here: password mutation depth and word indexing level. The most preferred options for running a speedy attack are *Light:Light*. For a deeper (and at the same time slower) search, set these options to *Normal* or even *Deep*. The duration of an intellectual attack also depends on the configuration of your system, and other factors.

It is highly recommended to shut down all other programs before launching the attack.

2.8.2.3 Fingerprint attack

Fingerprint (developed by Passcape) attack is a brand-new tool for recovering complex passwords, which could not be decrypted by other attacks. The idea of the attack is that here, to recover a password, we take neither individual words from the source dictionary, like in the dictionary attack, nor even word combinations, like in the combined attack, but so-called "fingerprints". Now, every source word from the dictionary is used for generating several fingerprints. If some password is found during the attack, it participates in generating new fingerprints, and the attack goes another round.

Before launching the attack, specify the source dictionary to be used for creating the fingerprint bank. The software comes with a dictionary, `common.pcd`, optimized for this attack, but you can use yours or download one off the Internet ('Online dictionaries' tab). There are no certain requirements to the dictionary, except one: the source dictionary must not be too large; otherwise, the attack will take significant time. You can use dictionaries with national passwords, if you suspect that the sought password contains characters in a national encoding.



Here is the way to generate fingerprints: first, break each word from the source dictionary into one-character passwords, then - into 2-character, etc. For instance, break the source word **crazy** into one-character fingerprints. We get:

c
r
a
z
y

Now, two-character:

cr
ra
az
zy

Next, three-character:

cra
raz
azy

And, finally, four-character:

craz
razy

We have got $5+4+3+2=14$ fingerprints, not counting the source word.

Repeat this for each word of the source dictionary. After this, all the fingerprints are dumped into a single database, naturally, discarding duplicates. We have got a database of fingerprints that would be used for checking passwords by gluing all the fingerprints with each other and finding the match.

The real fingerprint generation algorithm is much more sophisticated. Moreover, there is an option in the attack settings, **Maximize efficiency when generating fingerprints**, which uses a more sophisticated algorithm, which maximizes the efficiency (at the expense of speed) by generating additional fingerprints.

Let's take a look at the remaining options.

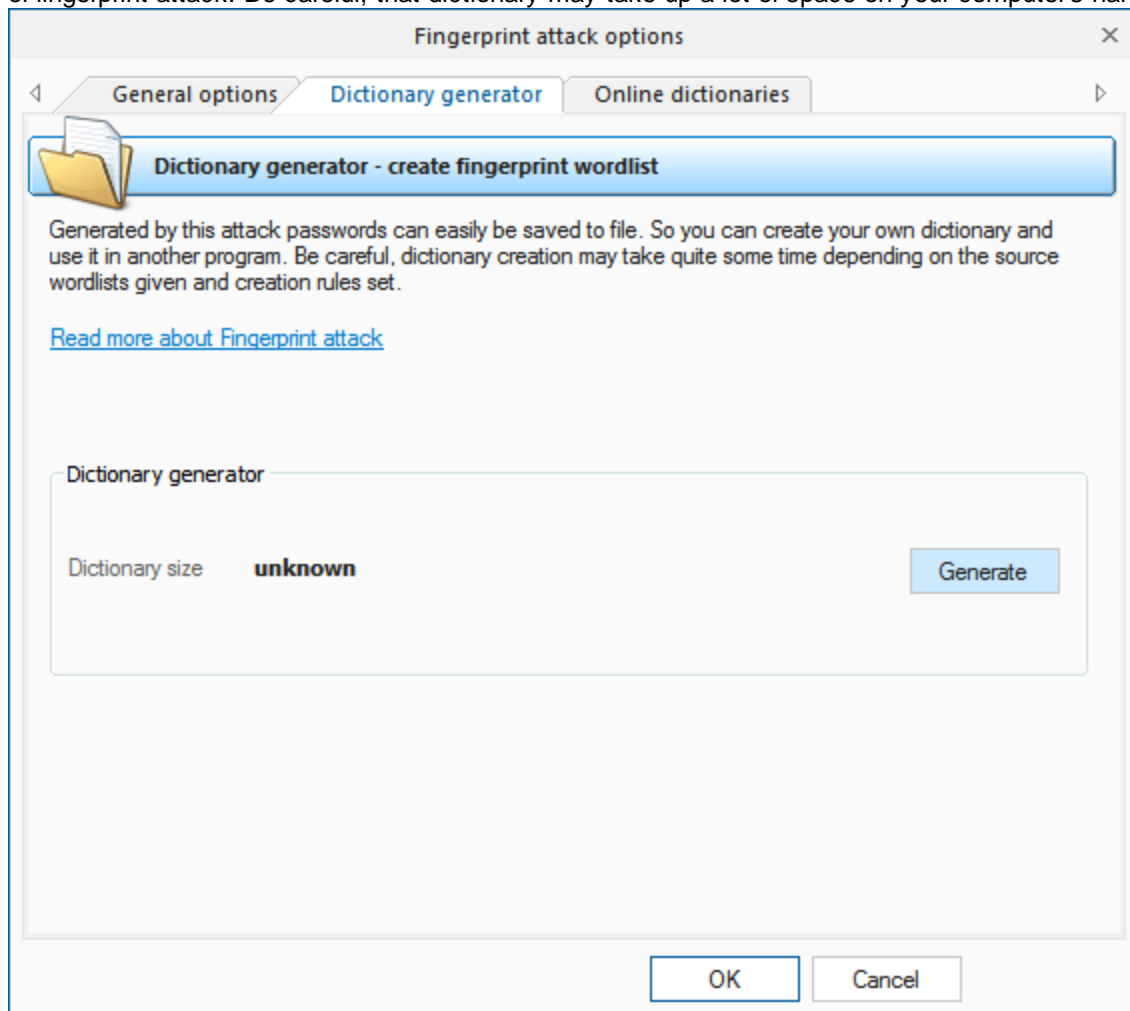
Use PPP engine to generate additional passwords - use passwords found in other attacks when generating fingerprints.

Use keyboard and frequently use sequences - add keyboard combinations and common sequences to fingerprint bank.

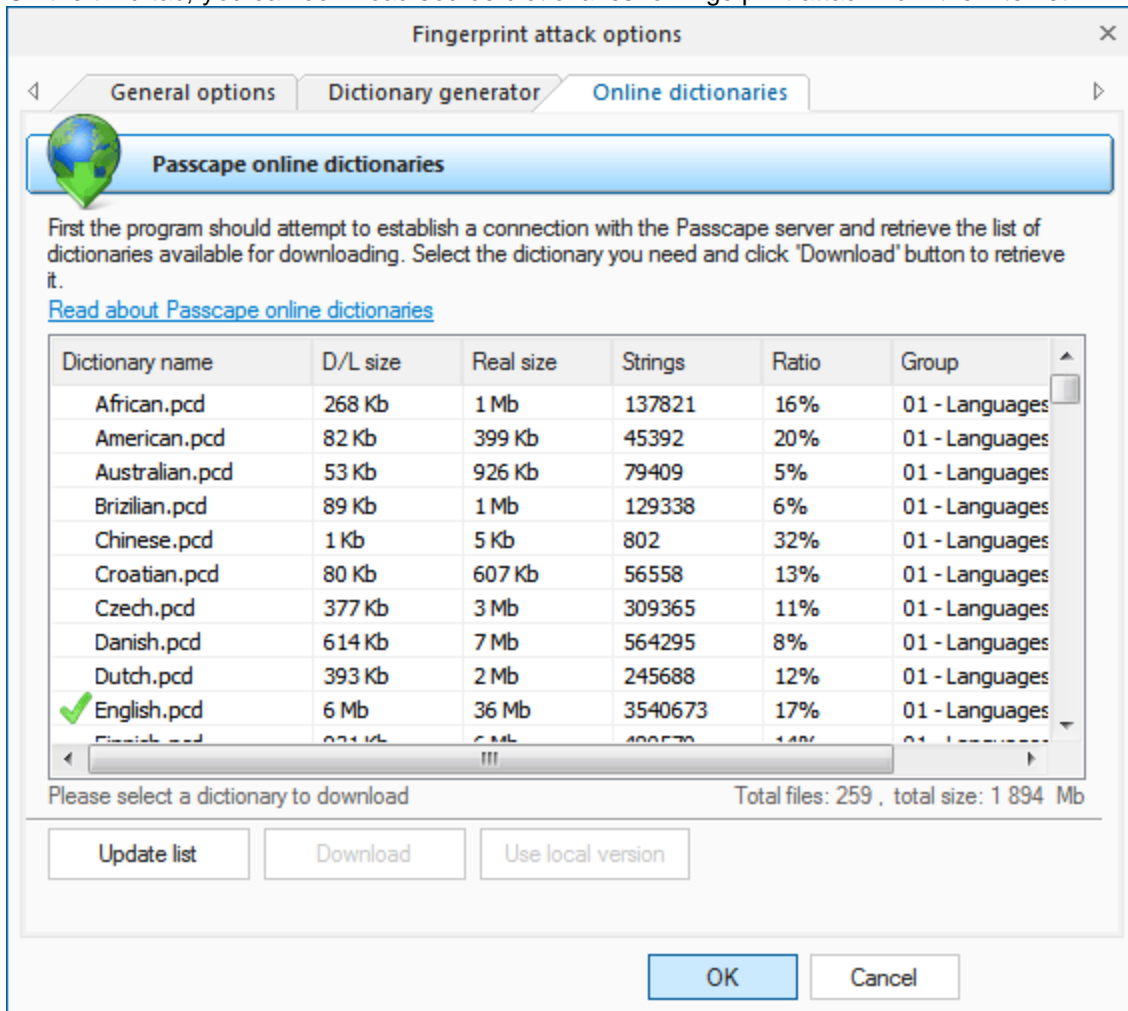
Use dates - add dates to fingerprints.

Use numbers and common sequences - use digits and simple combinations of letters.

The second tab with the settings allows to create and record a custom dictionary using current options of fingerprint attack. Be careful; that dictionary may take up a lot of space on your computer's hard disk.



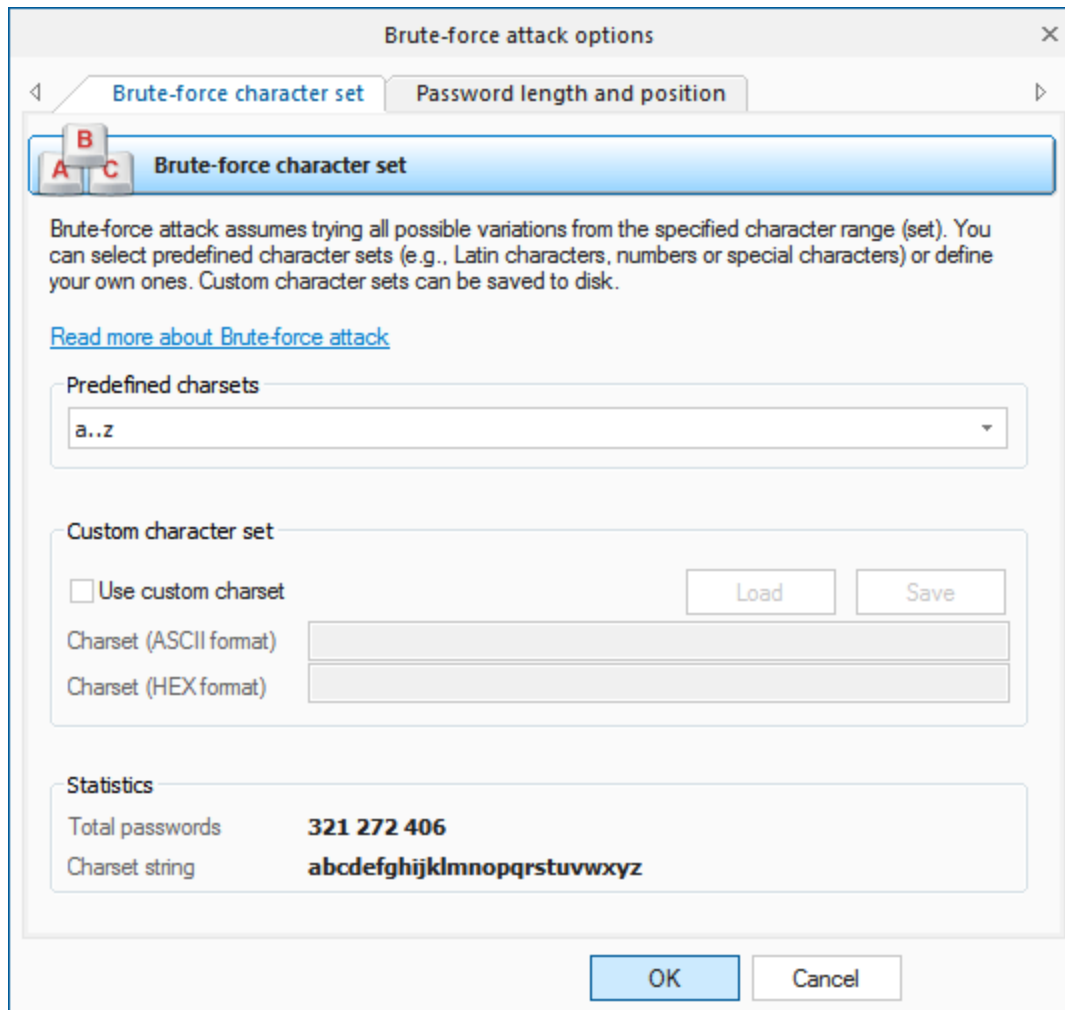
On the third tab, you can download source dictionaries for fingerprint attack from the Internet.



2.8.2.4 Brute-force attack (exhaustive search)

In cryptanalysis, a brute force attack is a method of defeating a cryptographic scheme by trying a large number of possibilities; for example, exhaustively working through all possible keys in order to decrypt a message. This definition was taken from [Wikipedia site](#).

Well, to put it in simple words, brute-force attack guess a password by trying all probable variants by given character set. Eg. checking all combination in lower Latin character set, that is 'abcdefghijklmnopqrstuvwxyz'. Brute-force attack is very slow. For example, once you set lower Latin charset for your brute-force attack, you'll have to look through 208 827 064 576 variants for 8 symbol password. It may be used only if other attacks have failed to recover your password.



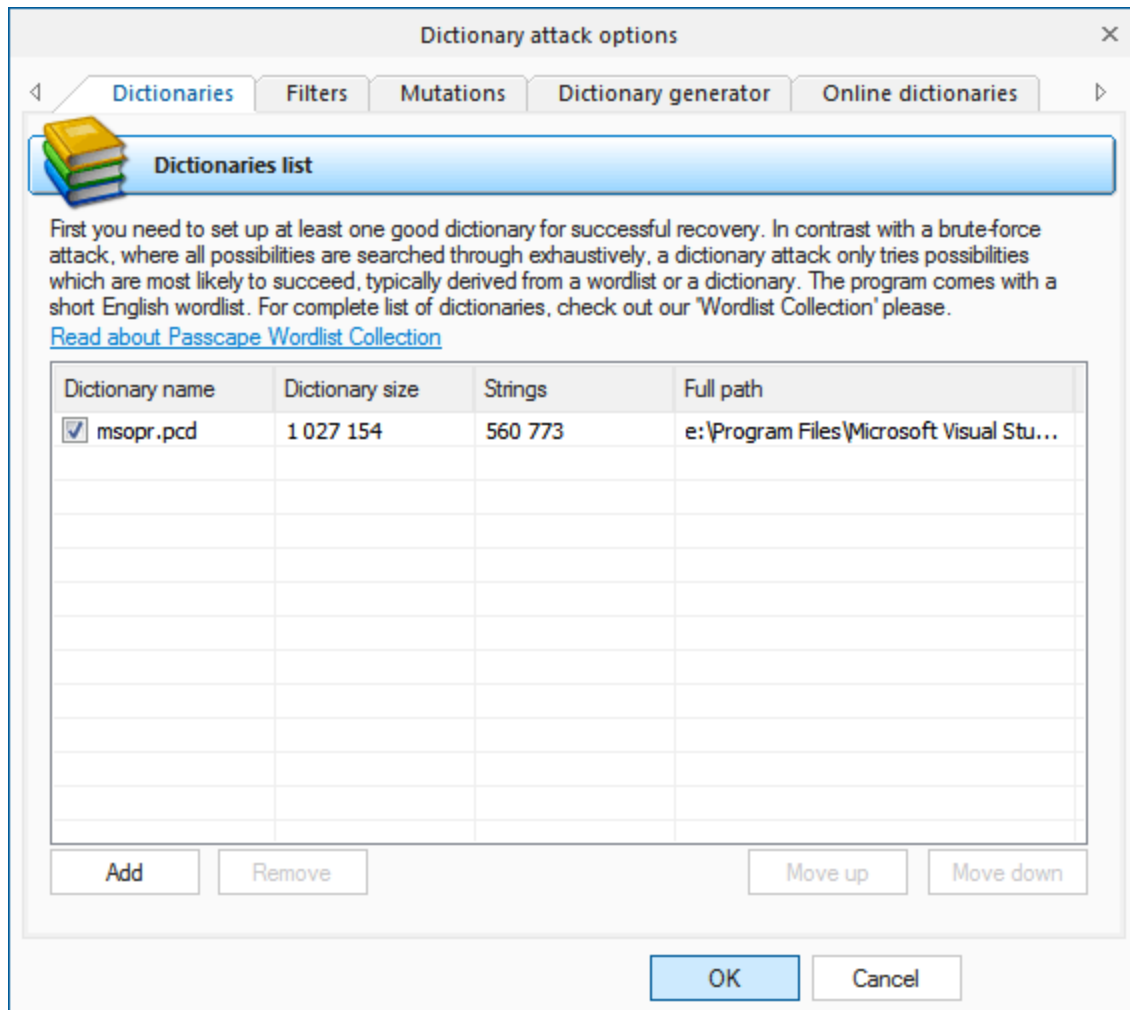
The brute-force attack options consist of two tabs.

The first tab is for setting the range of characters to be searched. You can use the predefined sets or create your own ones. To define your own character set, select the option '*Custom charset*'. This will enable two fields for defining a custom character set: the first one - for entering ASCII characters, second one - for entering non-printable characters. You can save your custom character set on disk. The program comes with several examples of user-defined character sets.

On the second tab, set the minimum and maximum length of the passwords to be searched. You can also set a starting password, which would start the search.

2.8.2.5 Dictionary attack

In contrast with a brute-force attack, where all possibilities are searched through exhaustively, a dictionary attack only tries possibilities which are most likely to succeed, typically derived from a wordlist or a dictionary. Generally, dictionary attacks succeed because many people have a tendency to choose passwords which are short, single words in a dictionary, or are simple variations that are easy to predict.



On the *'Dictionaries'* tab, set up the list of dictionaries to be used in the attack. Supported are plain-text dictionaries in the formats ASCII, UNICODE and UTF8, as well as encrypted/compressed dictionaries in the native PCD format, developed in Passcape Software. ZIP and RAR packed wordlist are supported as well with some restrictions. To deactivate a dictionary, simply clear the checkbox by its name. In this case, the dictionary, although it remains on the list, will be skipped during an attack. The software comes with a 500000-word dictionary. For complete list of dictionaries, check out our [wordlist collection](#) please. Or you can use our [online dictionaries](#) as an alternative.

The *'Filters'* tab filters the words from a dictionary by the include/exclude principle. If the first, inclusive, filter is enabled, the attack will accept only the words that contain at least one of the characters entered in the filter. If the second, exclusive, filter is set, the program will skip the words that contain at least one of the entered characters.

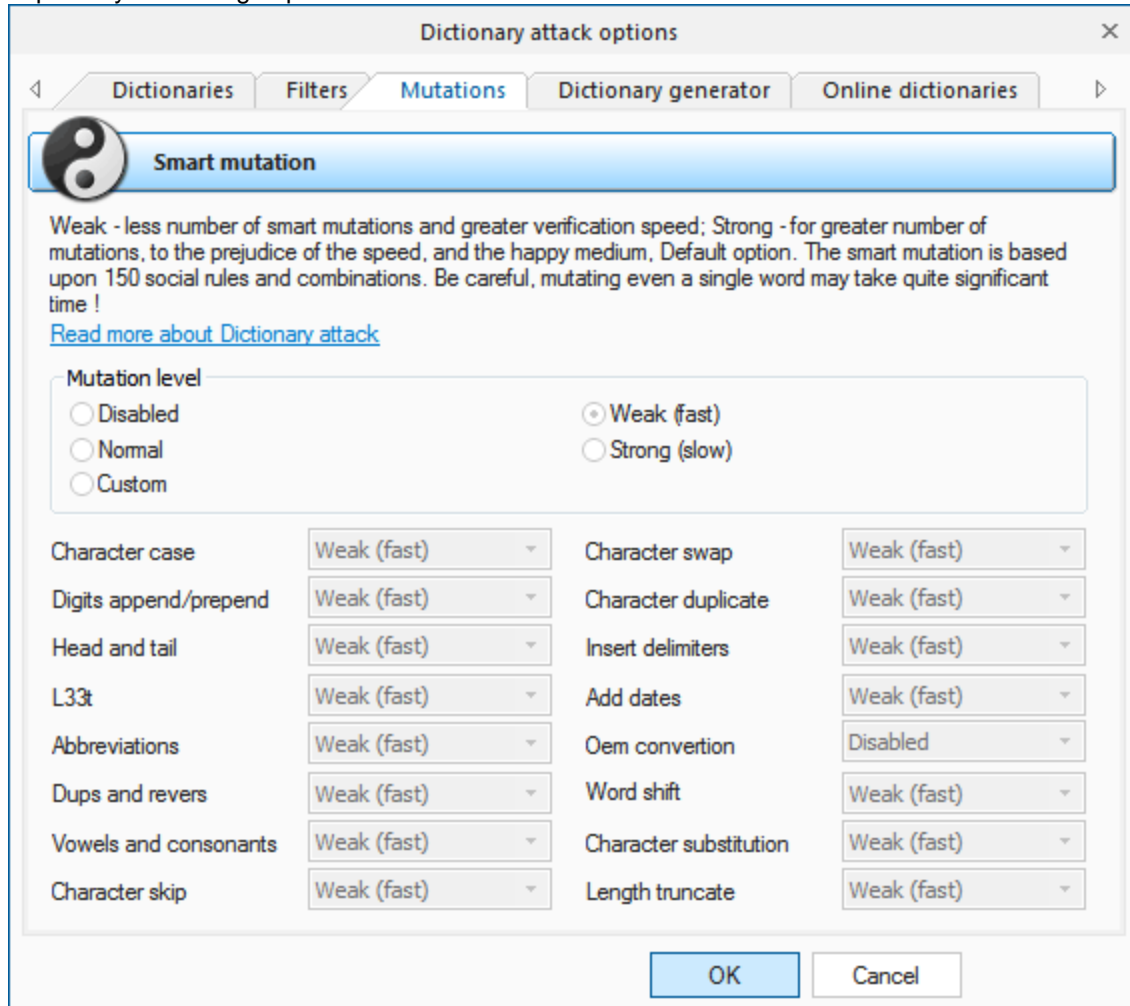
The 'Mutation' tab allows setting all kinds of possible combinations of the words to be searched. For example, if you set a strong mutation, the program will create several hundreds of analogs for each word from the dictionary. For example, secret - Secret - s3cr3t - secret123, and so on. You can set up to three mutation rules: *Weak* - less number of mutations and, in its turn, greater verification speed; *Strong* - for greater number of mutations, to the prejudice of the speed, and the happy medium, *Default* option.

You can use *Dictionary Generator* to create your own wordlists based on options of the first three tabs.

Online dictionaries. The program has a great feature that allows downloading and using existing dictionaries available on the Passcape website. We have accumulated quite a large dictionary collection - over 250 items. That should get you rid from the extra hassle on finding the required content on the Net.

Customizing mutations

The program has ability to customize the smart mutation of the Dictionary attack. All mutation rules are clustered into 16 primary groups. You can set one of three mutation levels or disable mutation separately for each group.



Simple description of what all these mutation groups mean is given below:

Group name	Description	Examples (for word 'password')	Comments
Character case	Checks case combinations of the input word.	Password, PassworD, PaSsWoRd	Maximal (Strong) level of the mutation group DOES NOT generate all possible case combinations of input words. To check all possible case variants, consider using Hybrid dictionary attack (aN rule)

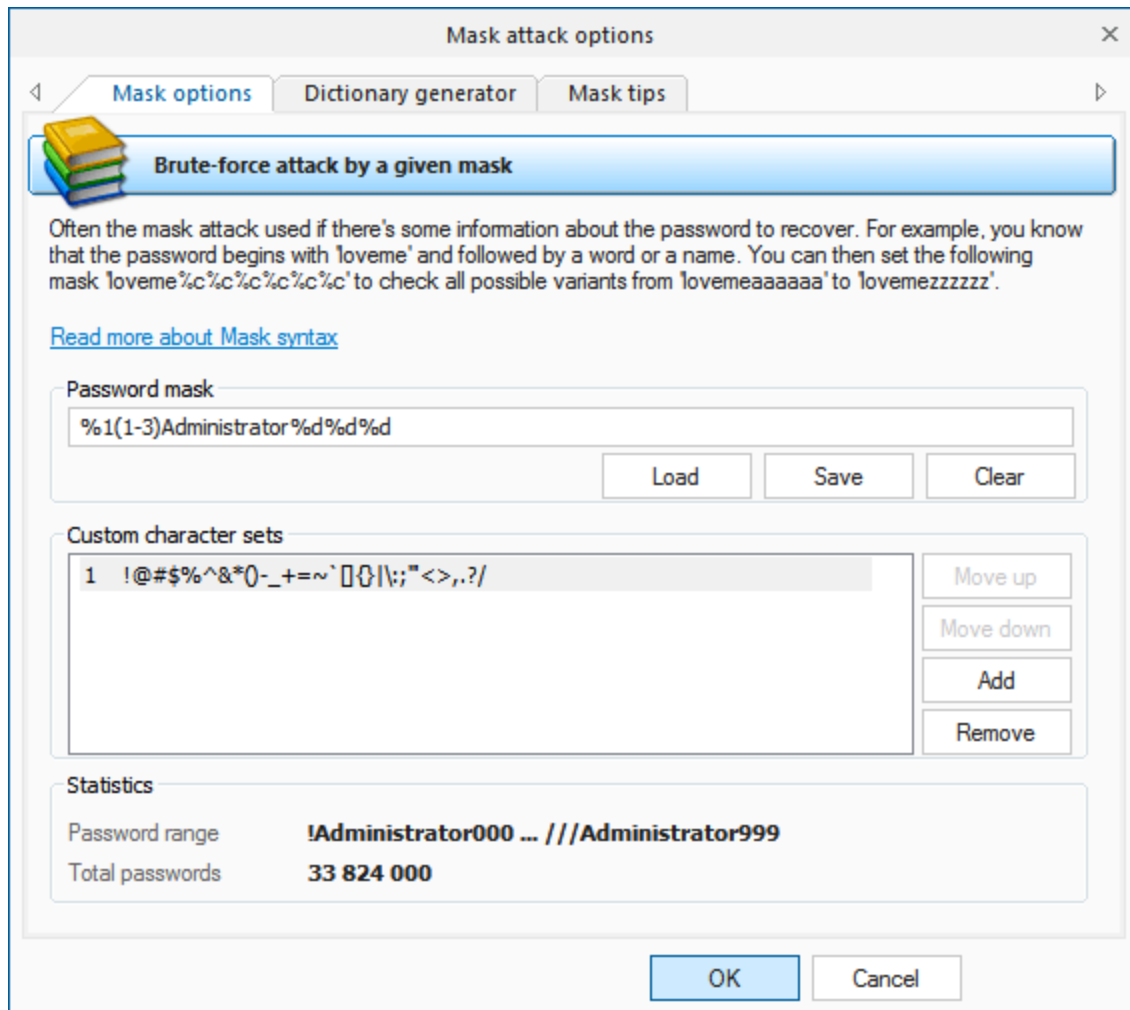
Group name	Description	Examples (for word 'password')	Comments
Digits	Adds digits to the beginning or to the end of the word.	password99, 2Password, PASSWORD3	Maximal level adds 2 digits.
append/prepend			
Head and tail	Almost the same as previous one, but appends or prepends words, abbreviations, characters, keyboard combinations, etc.	#Password#, password12345, 4everPASSWORD, Passwordqwerty	
I33t	Creates different combinations using leet language .	p@ssword, P@\$w0rd, P@\$W0RD	
Abbreviation	Converts several character combinations (if the initial word contains any) into abbreviations.	ihateyou -> ih8you, lh8u	
Dups and revers	Revers, duplicates the word, etc.	drowssap, passwordpassword, PasswordDrowssap	
Vowels and consonants	Mutates vowels and consonants (English characters only).	Psswrđ, PaSSWoRD, pAsswOrd	
Character skip	Skips a single character of the original word.	assword, Passwrđ, Pasword	
Character swap	Exchanges two adjacent characters.	apssword, Passowrd	
Character duplicate	Duplicates characters.	ppassword, ppaasswwoorrd, Passworddddd	
Delimiters	Separates characters with delimiters.	p.a.s.s.w.o.r.d, P-a-s-s-w-o-r-d	Maximal level uses 10 delimiters.
Dates	Adds dates to the end of the word.	Password2010, password1980	Even though the mutation engine can generate more complicated variations (for example, password03171998 or Password19710830), this feature if turned off here even in maximal mutation level.
Oem conversion	Converts English word into another language and vice-versa using alternative keyboard layout (second language of the OS).	If your OS has 2 languages installed (let it be English and Russian), the program will convert initial word password into Russian and Russian will be converted into gfhjkm .	The program works correctly for 2 or even more languages. So if you have 5 languages installed locally (including English one), there will be 4 different combinations of the input word.
Word shift	Stupidly shifts all characters of the word to the right or to the left.	asswordp, dpasswor	
Character substitution	Replaces a character of the initial word.	oassword, passqord	This is quite helpful rule assuming the fact that the characters for substitution are taken from a special

Group name	Description	Examples (for word 'password')	Comments
			table. For example, the character 's' will be replaced with the following ones: 'a', 'w', 'e', 'd', 'x', 'z'. You can notice that all of these characters are located near 's' on any qwerty keyboard.
Length truncate	Truncates word length to probe all possible length combinations.	passwor, passwo, Pass	

2.8.2.6 Mask attack

Mask attack is an irreplaceable tool when you know a fragment of the password or have any specific details about it. For example, when you know that the password consists of 12 characters and ends with the *qwerty*, it is obvious that searching the entire 12-character range of passwords is unreasonable. All what would be required in this case is to pick the first 6 characters of the sought password. That is what mask attack is for.

In our case, we could define the following mask: **%c%c%c%c%c%cqwerty**. That means that the program would serially check the following combinations: aaaaaaqwerty .. zzzzzzqwerty. If the original password is 'secretqwerty', it perfectly hits our range.



The mask entry field is used for setting the rule, by which the program will try to recover the password. If the mask is set correctly, below you will see the range of characters generated by the mask. User-defined masks can be saved to disk. You can also use the mask tool to generate a dictionary (may not be available in some editions).

The mask syntax is quite trivial and consists of static (unmodifiable) and dynamic (modifiable) characters or sets. Dynamic characters/sets always have a leading %. For example, if you set the mask `secret%d(1-100)`, the program will generate 100 passwords (`secret1`, `secret2`: `secret100`).

The program supports the following dynamic mask sets:

- %c lower-case Latin characters (a..z), 26 symbols
- %C upper-case Latin characters (A..Z), 26 symbols
- %# full set of special characters (!..~ space), total 33 symbols
- %@ small set of special characters (!@#\$%^&*()-_+= space), 15 symbols
- %? all printable characters with ASCII codes of 32..127
- %d one digit (0..9)
- %d(x-y) numbers between x and y inclusive
- %r(x-y) user-defined characters with serial ASCII codes between x and y
- %r(x1-y1,x2-y2...xn-yn) set of several non-overlapping sequences of ASCII characters. Useful for defining custom character sets; e.g., of OEM characters.

- %1[2..9] a character from user defined charset 1..9
- %1[2..9](min-max) user-defined range of variable length (from min to max). You can set up to 9 your own custom character sets.
- %w(wordlist) a word from a given wordlist (a full path is also allowed)

When setting %r, keep in mind that the range of defined OEM characters (with character code greater than 127) is generated using the DOS encoding.

Examples:

```
test%d           - will generate password range test0..test9, 10 passwords total
test%d(1980-2007) - test1980 .. test2007, 28 passwords
test%r(48-57,97-122) - test0 .. testz, 36 passwords
%#test%#        - _test_ .. ~test~, 1089 passwords
admin%1(1-5)     - admina .. adminzzzzz, where %1 is user defined charset 1 (a..z)
%1%1%1pin%2%2%2 - aaapin000 .. zzzpin999, %1 is user character set a..z and %2 is second user-defined charset which contains characters 0..9
%w(c:\dic\names.dic)%d - words from names.dic with a digit at the end
```

By switching to **Dictionary generator tab**, you can generate your own dictionary by a given mask, and save it to disk. This feature available in Advanced edition of the program only.

Third tab of the mask options contains a short description of the mask syntax and a couple of simple examples.

2.8.2.7 Base-word attack

Base-word attack (developed by Passcape) is in many ways similar to mask attack. However, here you don't need to set up the syntax; simply enter the keyword, which supposedly was the base word for the password. It is an irreplaceable recovery tool when you know a portion of the password or its basic component. Normally, such cases dispose to using mask attack; however, it does not always allow coping with the task set forth. Suppose our password was 'S10wDr1v3r'. Trying to recover such a complicated password using brute-force attack would be an ungrateful job, even if you are quite sure that it is based upon the 'slowdriver' word. These are the cases when the base-word attack will rescue you.

With this tool, the program will attempt to recover the original password, trying all possible combinations founded upon 15 groups of rules (total over 150 rules.) If you enter 'slowdriver' in the field, you will see that the program has generated several thousands of different combinations upon this phrase, and one of those combinations could match our password.

Base-word attack options

Base-word attack is effective if you know a part of the original password

Type a word or a phrase the password may consist of. For example, you know that your password was formed on the phrase 'slowdriver'. Type this phrase and start the attack. The program will try all possible combinations to scan for the real password base upon this word. In our example the program will generate thousands mutated words and will be able to find 'freaked' passwords like SlowDriver, Slowdriver123, SLoWDriVer, S10wDr1v3r, etc.

[Read more about Base-Word attack](#)

Known part (base-word) of the password

Base-word of the password

☒ Use document name as an input word

Mutations

Mutation level

☐ Mutate character case only

Dictionary generator

Dictionary size

If the length of the phrase exceeds 8-10 characters, the mutation may take significant time. If you remember the original password precisely and simply have forgotten the sequence of the upper-case and lower-case characters in it, you can select the option 'Use only case mutations'. With this option selected, the program will generate passwords with all possible combinations of upper-case and lower-case characters, total 2^n passwords, where n - is password length. For example, for the password 'slowdriver' the program will generate $2^{10}=1024$ different combinations for each keyboard layout installed on your computer. You can also generate a dictionary on those mutations and save it on a disk (available not in all editions).

Turn on the 'Use document name as an input word' option to let the program automatically select the base-word phrase based on the document's name.

Note, if your password length exceeds 15-16 characters, it may take quite some time to prepare (mutate) the password for the attack.

2.8.2.8 Combined dictionary attack

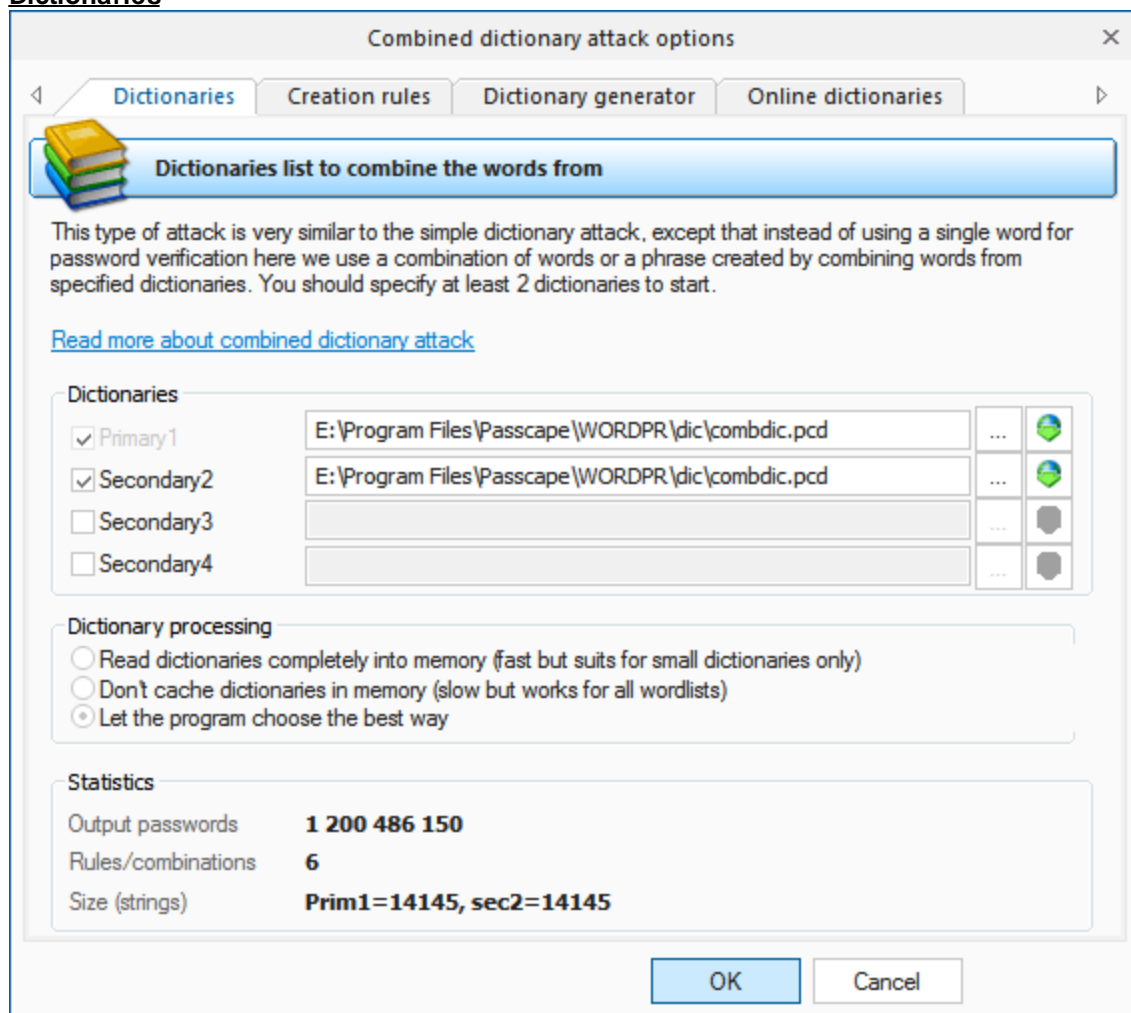
Combined dictionary attack (developed by Passcape Software) is great at recovering passwords that consist of 2,3 and even 4 words. This type of attack on difficult and compound passwords is very similar to the simple dictionary attack, except that instead of using a single word for password verification here we use a combination of words or a phrase created by combining words from specified dictionaries. To successfully utilize this attack, set at least two dictionaries and the rules for generating passwords. You can set the regular dictionaries used in the simple dictionary attack, but it is recommended to use rather small dictionaries with the most common words. Perfect dictionaries for the combined pass phrase attack are those that have different forms of words in them; e.g. jump, jumper, jumped, jumping.

Combined attack sets a certain limit to the number of dictionaries that can be used; that's not more than 4. Thus, the general limitation of this attack is that only password phrases of not more than 4 words can be recovered using this attack.

Another essential drawback is the wide range of phrases generated. And, as the consequence, the proportional increase of the time spent on the validation of a password. Keep in mind that when generating passwords that consist of 3 or 4 words, the generation process takes considerable time

If finding the right dictionary is difficult, don't worry. The software comes with a special dictionary for the combined attack. You can also take advantage of the [Online Dictionaries](#) tab or the corresponding button to download such dictionaries from the Passcape website.

Dictionaryes



The way the combined attack works is really simple. For example, if you have set two dictionaries, the program will generate the passwords as follows: it will take the first word from the first dictionary and glue it with the first word from the second dictionary, then with the second word, and so on until the end. Then it checks the second word from the first dictionary and goes the same route, and so on.

To understand how the combined attack works, let's take a look at a couple of password generation examples that involve, in the first case, the same dictionary and in the second case - two different ones.

1. Suppose we've got a single dictionary with three words: action, bad, and computer. We will set this dictionary as two original sources: primary dictionary & secondary dictionary2 (see the figure). After these dictionaries have been processed, at the output we have the following phrases (they will be used when checking the password sought):

'actionaction', 'actionbad', 'actioncomputer'

'badaction', 'badbad', 'badcomputer'

'computeractio', 'computerbad', 'computercomputer'.

9 phrases total.

2. In the second case, we have got two different dictionaries. For example, the first dictionary consists of three words: action, bad, and computer. The second one also has three words: date, eagle, fail. In this case, we are going to have the following phrases:

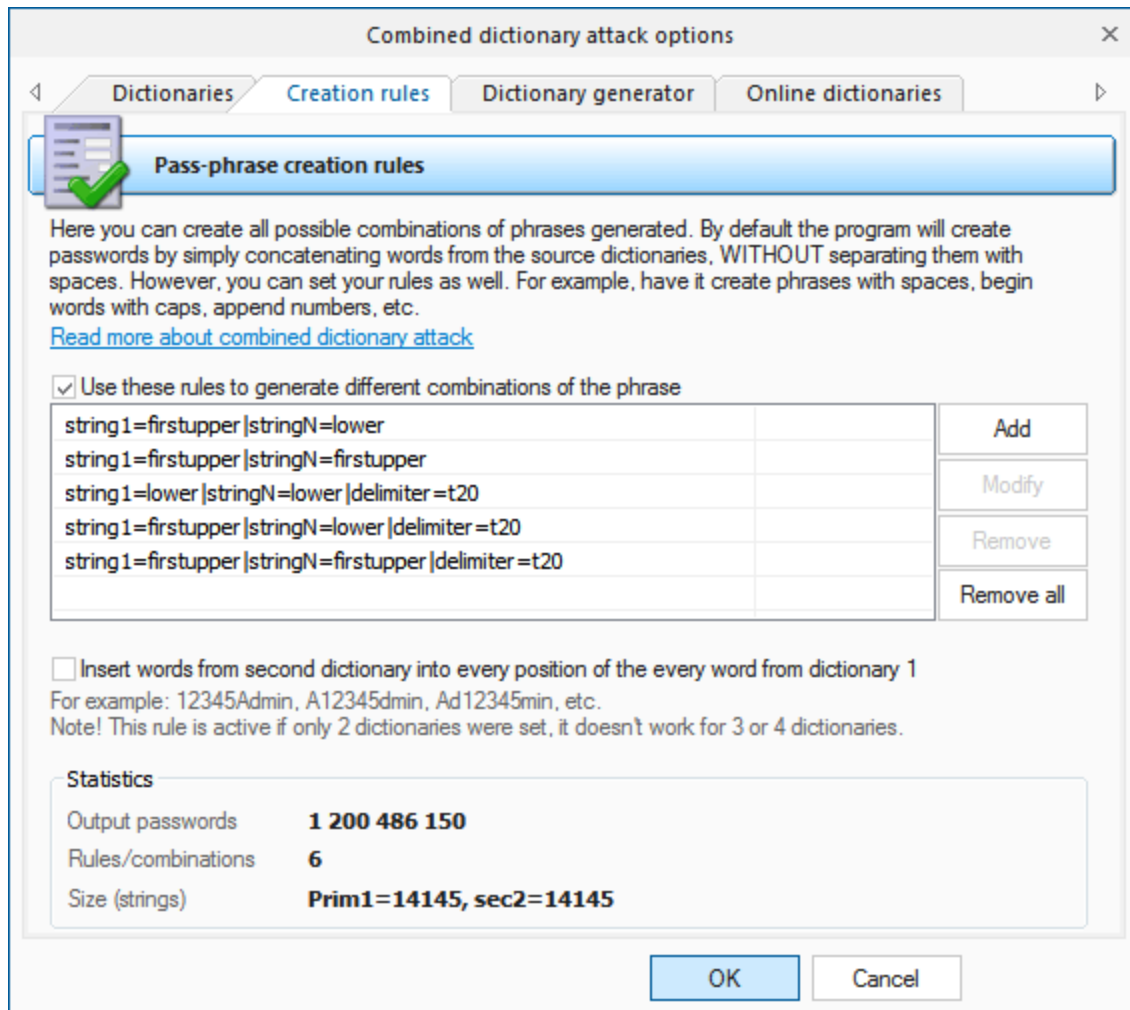
'actiondate', 'actioneagle', 'actionfail'

'baddate', 'badeagle', 'badfail'

'computerdate', 'computereagle', 'computerfail'.

The example is plain but demonstrative. The idea is that for multiple sources you can successfully use both a single dictionary and multiple ones. It all depends on your imagination. The last example shows that a special attention should be paid to the order of the dictionaries if they are different. The order of the words in the phrases to be created depends directly on the order of the source dictionaries. In our second example, if we swap the primary and the secondary dictionaries, at the output we will obtain a completely different set of phrases.

Mutation rules



Passwords created by the combined attack are generated according to special rules that are to be set on the second tab. By default, when password generation rules are disabled, the program generates passwords by simply gluing up the words from the dictionaries, without separating them with a space. For example, of the two words are 'my' and 'computer', you will get 'mycomputer'.

If word insertion option is set, the program additionally creates passwords by inserting words from second dictionary into every position of the word from dictionary 1. For example, if the first dictionary's word is **Admin**, and the word from the second dictionary is **12345**, the program will generate the following passwords:

12345Admin
A12345dmin
Ad12345min
Adm12345in
Admi12345n

And so on for all words of the second dictionary. Then goes another word from dictionary 1, etc. The option is active if only 2 dictionaries were set.

The generation rules are made to extend the password search options. For example: Mycomputer, MyComputer, MY COMPUTER, my-computer, etc. There are special rules available for this purpose; you don't have to know the syntax of them, for the mutation rule creation dialog is simple and intuitive.

Add/modify pass-phrase generation rule

Set/change pass-phrase generation rule here

Phrase properties

Prefix: none

First word: first character is upper, the rest are lower

Word delimiter: constant text
-

The rest words: first character is upper, the rest are lower

Postfix: none

Rule: string1=firstupper|delimiter=t2D00|stringN=firstupper
Example: **I-Love-My-Computer, total variants=1**

OK Cancel

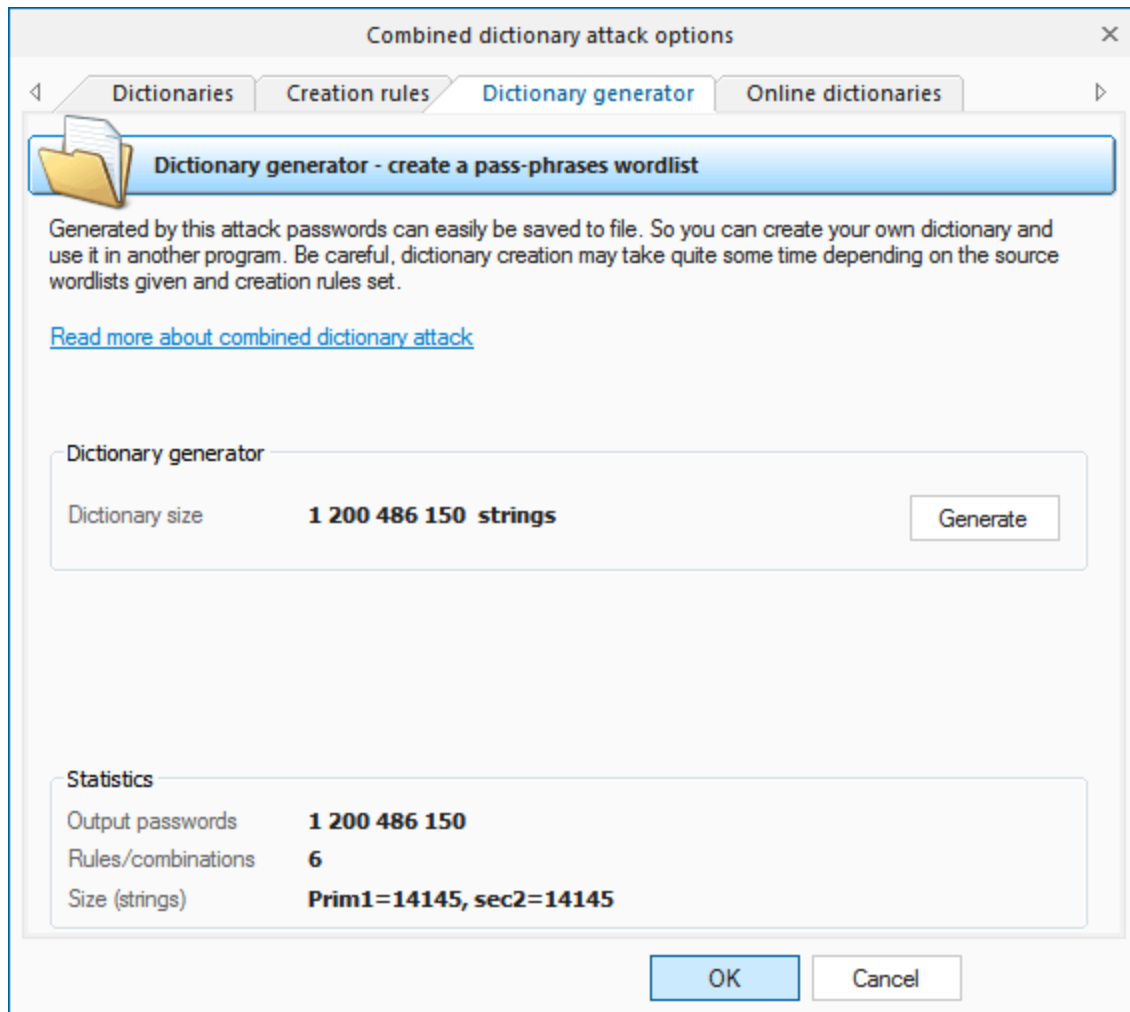
Each mutation rule consists of five elements:

1. *Prefix* - text that will appear before each phrase. This element can be a character from given charset, plain text string, one digit between 0 and 9 or a number. For instance, if you set a one-digit prefix, the phrases created with this rules will look as follows: '0 aaa bbb', '1 aaa bbb' : '9 aaa bbb'.
2. *First word* - the action to be performed over the first word of each phrase. There are only four options. Namely: leave intact as is in dictionary, convert all characters to lowercase, convert all characters to uppercase or capitalize only the first letter of the word.
3. *Word separator*. It may be absent. Then all the words will be concatenated. Example: 'aaabbb', 'aaaccc', 'aaadd', etc. You can otherwise set a custom separator; e.g. the '-' character: 'aaa-bbb', 'aaa-ccc', 'aaa-ddd'. Or you can set a range of characters.
4. *Other words*. With this attribute, similarly to 2., you can set rules for the other words of a phrase.
5. *Postfix* - text that will finalize each phrase. For example, if you set Postfix to the '?' or ' ? ', all phrases created with this rule will have the question mark at the end.

Certainly, the more password generation rules you set, the more chances you have to pick the right password. But, on the other hand, the more time you will have spent on the attack.

The 'Statistics' group shows the average and recommended average size of a dictionary, number of words in source dictionaries, total number of passwords being generated and other helpful information.

Dictionary generator



The third tab of options serves for creating combined attack-based dictionaries (available not for all editions).

You can also [download additional dictionary modules](#) from the Passcape Software Web site.

2.8.2.9 Pass-phrase attack

More and more users choose to make up their passwords of entire phrases, passages from poems, movie aphorisms, Latin aphorisms, etc. Attempting to recover such passwords using the traditional techniques is unthinkable, even with the reference to the advancement of the computing power of modern computers. Therefore, the recovery help comes with the predefined and known phrase attack.

Pass-phrase attack is by much similar to the simple dictionary attack, except that here the password search goes phrase by phrase instead of going word by word. The main idea of the attack is to guess the right password by searching through predefined frequently used expressions, phrases and word combinations.

For example, if the sought password is made of the widespread phrase 'To be or not to be', it is obvious that this is the only attack that has the virtue to cope with such a password. In order to do that, you are

Phrase mutation

Pass-phrase attack options

Phrase dictionaries | **Phrase mutation** | Dictionary generator | Online dictionaries

Pass-phrase mutation

Weak mutation is normally justified in only one case: for increasing the attack speed or when using dictionaries of large sizes. Medium mutation is a normal balance between the operating speed and the number of generated password phrases. Strong mutation allows finding more difficult passwords by generating the widest range of all possible combinations, to the prejudice of the search speed. For instance, English phrases typed using the national keyboard layout, abbreviations, etc.
[Read more about pass-phrase attack](#)

Mutation level

☒ Enable smart mutation

☒ Weak (fast)
 ☐ Ultra light (extremely slow)

☐ Normal
 ☐ Ultra normal (extremely slow)

☐ Strong (slow)
 ☐ Ultra hard (extremely slow)

Phrase limitation

☒ Limit input phrase

Maximal phrase length:

Maximal words in phrase:

OK Cancel

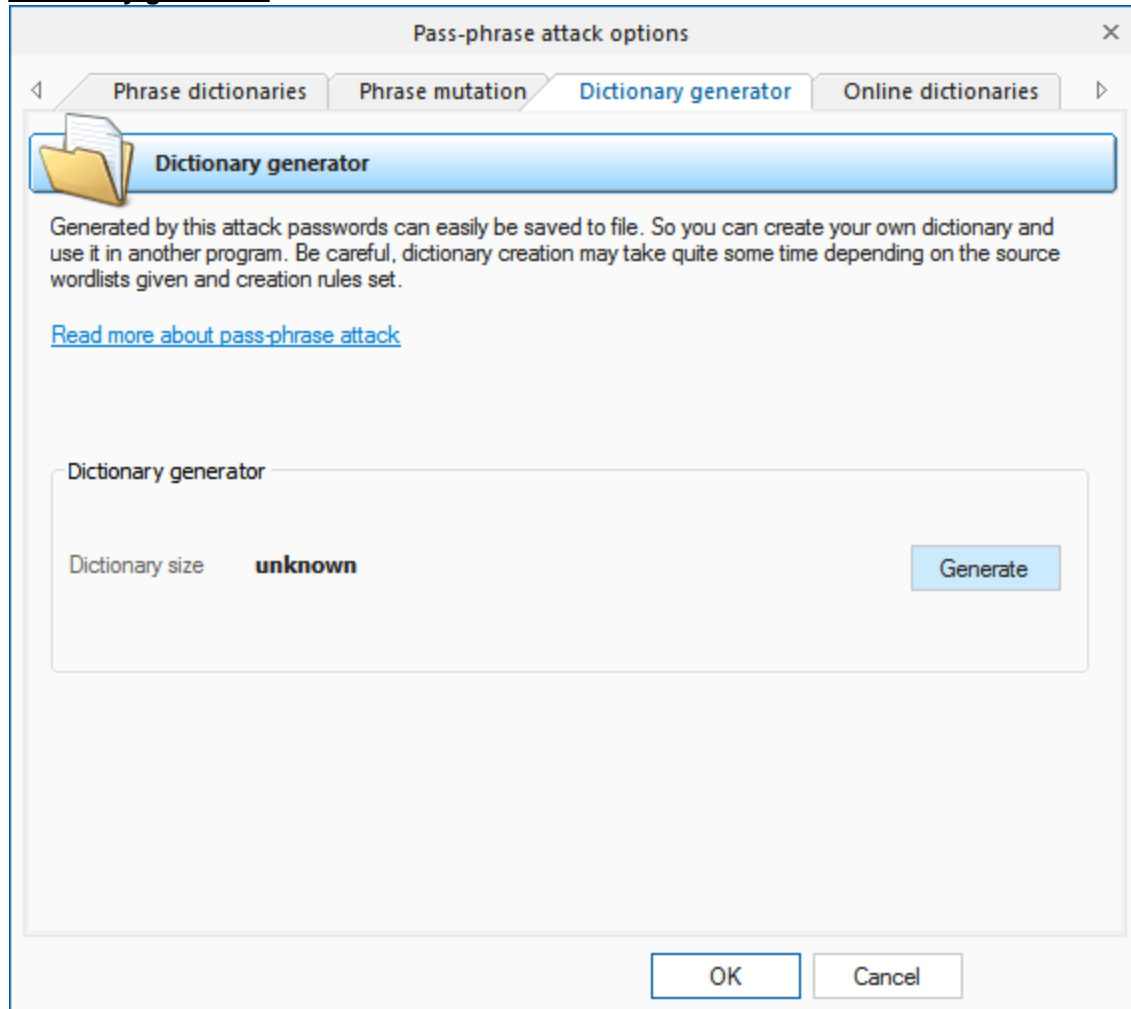
Mutation is worth saying more, since as you should have known strong mutation significantly raises chances for the successful recovery. Weak mutation is normally justified in only one case: for increasing the attack speed or when using dictionaries of large sizes. Medium mutation is a normal balance between the operating speed and the number of generated password phrases. Strong mutation allows finding more difficult passwords by generating the widest range of all possible combinations, to the prejudice of the search speed. The greater is the mutation level, the more passwords the attack will cover.

Major difference in mutation levels:

- Weak - simplest thus fastest mutations.
- Normal - the same as Weak, but generates several additional mutations and case combinations.
- Strong - the same as normal plus more mutations and national passwords (according to the installed keyboard layouts, if any).
- Ultra light - this is a 2-step mutation because every generated in Weak mode password goes through the second mutation round (one used in Weak mode of the simple dictionary attack).
- Ultra normal - 2-step mutation. Every password generated in Normal mode is used as a source to generate additional combinations by implementing additional Normal mutation level.
- Ultra hard - every password generated in Strong mode is used as a source to generate additional combinations by using additional Strong mutation level.

Be careful! Ultra modes generate a great number of passwords, thus the attack may be ran extremely slow. To speed up the attack, consider setting up input phrase limits. For example, you can limit input phrases to 6 words and 27 characters.

Dictionary generator



The third tab uses for creating pass-phrase dictionaries.

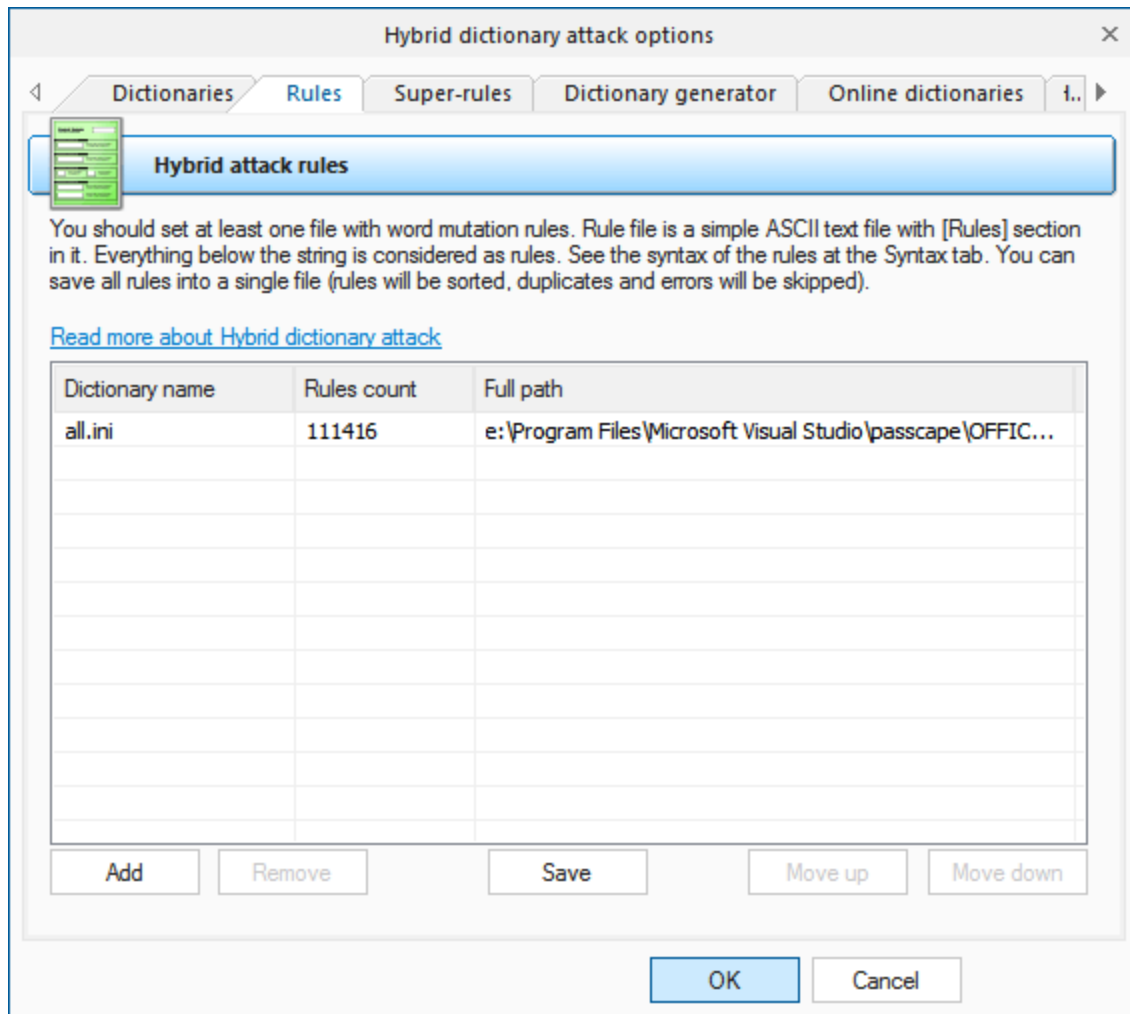
2.8.2.10 Hybrid dictionary attack

Hybrid dictionary attack is a form of [simple dictionary attack](#). However, unlike the latter, hybrid attack allows user to set his own word mutation (variation) rules and attempt to validate the modified words as source passwords. For example, user could capitalize the first letter of a password being validated, append '2' to it, replace the number 8 in it with the letter B, O with 0, etc.

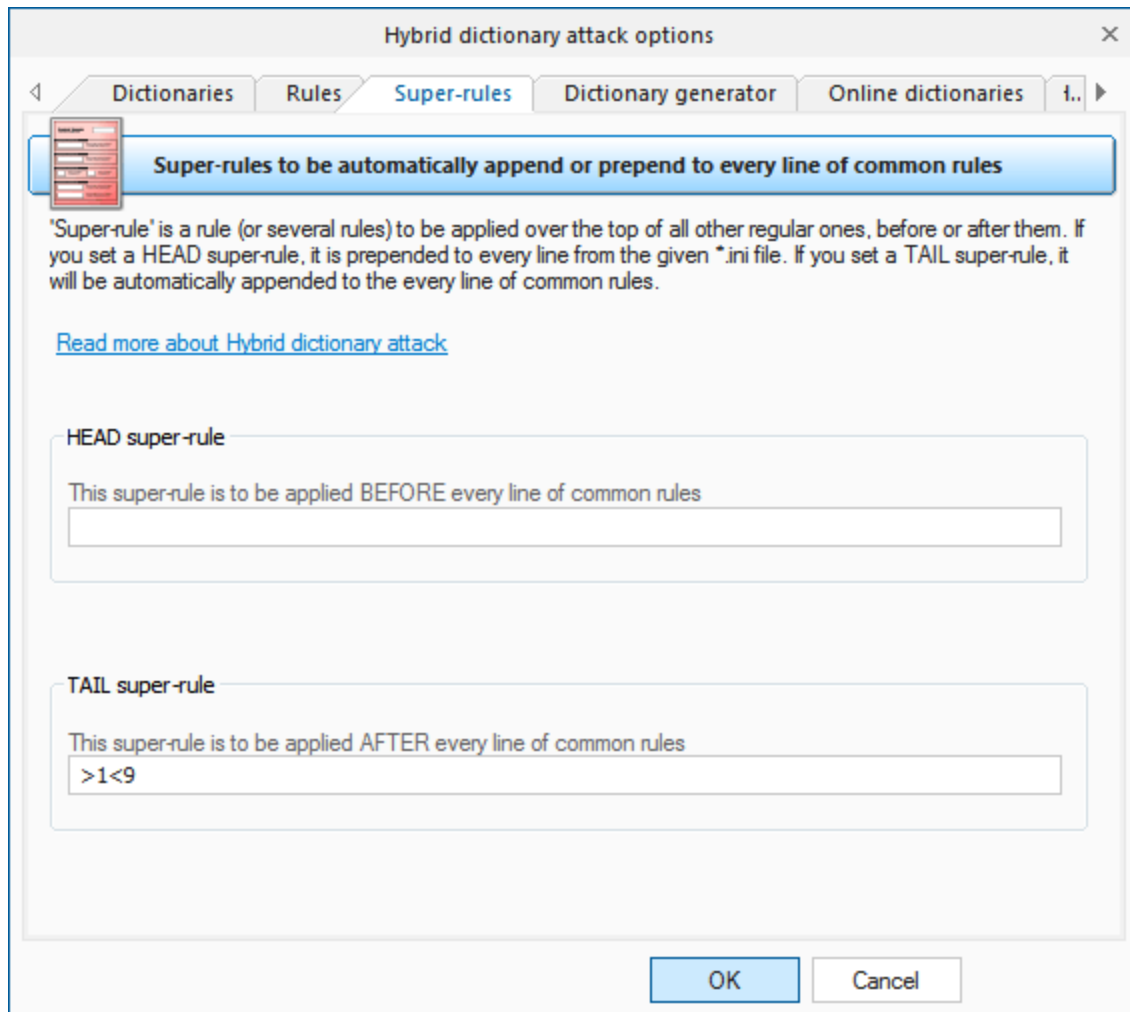
Actions, performed on source words from the dictionary, are called rules. Multiple rules can be applied to each source word.

Hybrid dictionary attack settings are grouped in 7 tabs:

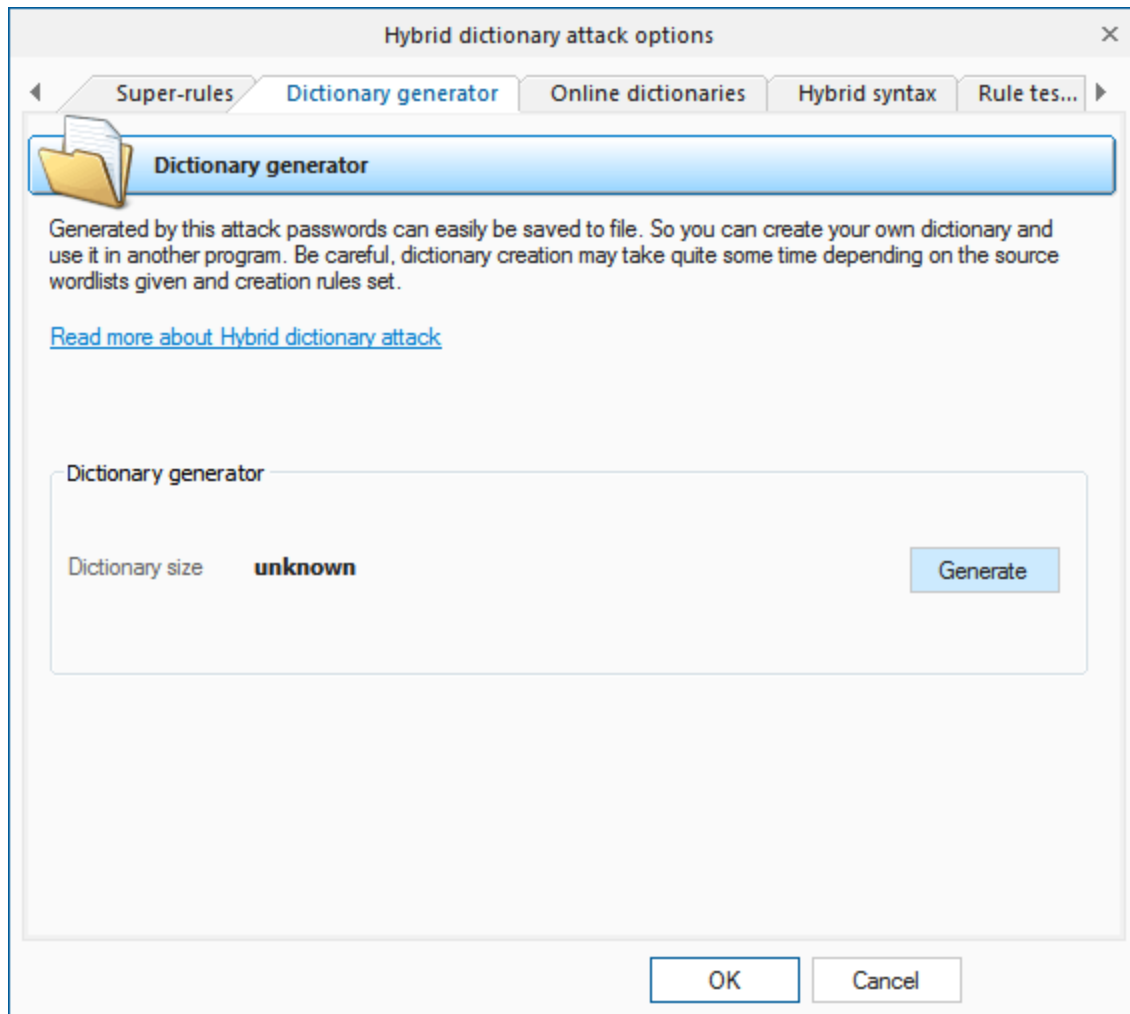
1. **Dictionaries** - for setting up source dictionaries.



'Super-rule' is a rule (or several rules) to be applied over the top of all other regular ones, before or after them. For example, you can set 'a8' tail super-rule to create all possible case combinations after a common mutation has been done. So 'asa4' rule from l33t.ini file will become 'asa4a8', '/csc(' will become '/csc(a8', etc. Yet another one example: setting the '>6<G' head rule allows you to skip all words of less than 6 or greater than 16 characters, before starting a common mutation. This is a helpful feature once you decide to add the same rule to all text lines of the selected *.ini files. There's no need to modify them all. Be careful though, the 'aN' super-rule may increase the total number of generated passwords drastically.

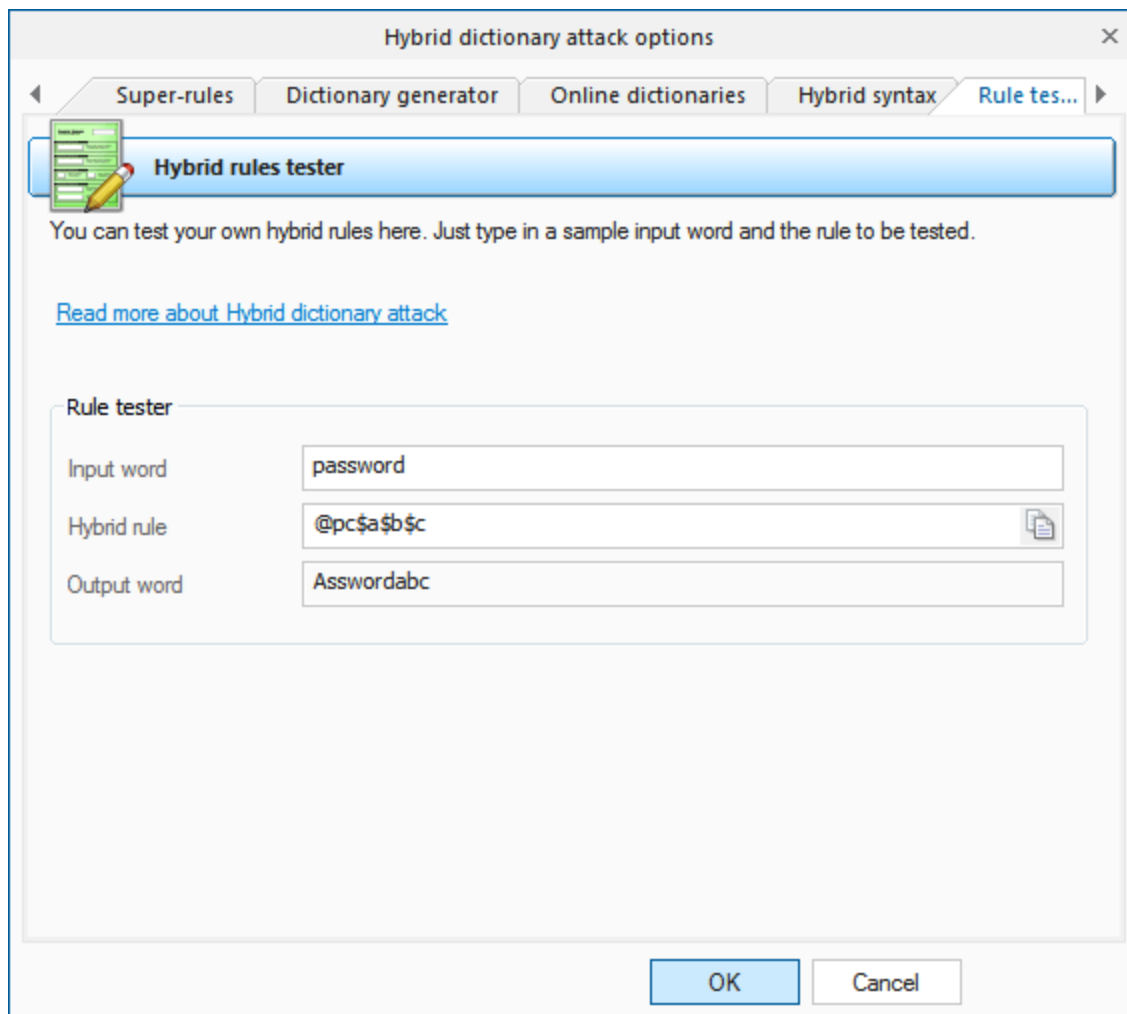


The **'Dictionary generator'** tab is designed for generating dictionaries obtained from an attack. Further on, those dictionaries could be used, for example, in other applications. To generate a dictionary, specify a source dictionary and a set of mutation rules for it. The size of a target file may exceed 2 GB. Be careful, the dictionary generation process may take considerable time!



You can download additional wordlists for the attack using '[Online dictionaries](#)' tab.

If you want to create your own set of rules, you can use the last two tabs as sources of help. While the '**Syntax**' tab gives mere descriptions of available rules, on the last tab you can actually test them by specifying a source word and a rule for the hybrid attack. Forward your rule sets to us; if we find them interesting/useful, we will include them in the default distribution of the program.



Rules description for the hybrid dictionary attack

Several rules at a line are allowed to be set.

Rules (if any) are processed from the left to the right.

Maximal line length is limited to **256** characters.

Maximal output word length is limited to **256** characters.

White space is ignored as long as it is not used as a parameter.

A line started with # character considered as a comment

All text before the **[Rules]** line is considered as comment.

N and M always start at 0. For values greater than 9 use A..Z (A=10, B=11, etc.)

Rules

Rule	Example	Input	Output	Description
:	:	password	password	Do nothing to the input word
{	{	password	asswordp	Rotate the word left
}	}	password	dpassword	Rotate the word right
[[password	assword	Delete the first character
]]	password	passwor	Delete the last character

Rule	Example	Input	Output	Description
c	c	password	Password	Capitalize
C	C	password	pASSWORD	Anti-capitalize (lowercase the first character, uppercase the rest)
d	d	password	passwordpassword	Duplicate word
f	f	password	passworddrowssap	Reflect word
k	k	password	ghjkm	Convert word using alternative (first after default) keyboard layout. The rule works in both directions. For example, if there's Russian keyboard layout installed previously in the system, the rule should convert word 'password' to Russian 'пассворд', and Russian word 'пассворд' to 'ghjkm'. This is very helpful when looking for non-English passwords. If only one language is installed in the system, the rule does nothing.
K	K	password	passwodr	Swap last two characters
l	l	password	password	Convert all characters to lowercase
q	q	password	ppaasssssw woorrdd	Duplicate all symbols
r	r	password	drowssap	Reverse word
t	t	PassWord	pASSwORD	Toggle case of all characters
u	u	password	PASSWORD	Convert all characters to uppercase
U	U	my own password	My Own Password	Capitalize all words delimited with space (upper-case the first character and every character after a space)
V	V	password	PaSSWoRD	Vowels elite
v	v	password	pASSWoRD	Vowels noelite
'N	'4	password	pass	Truncate the word to N character(s) length
+N	+1	password	pbssword	Increment character at position N by 1 ASCII value
-N	-0	password	oassword	Decrement character at position N by 1
.N	.4	password	passoord	Replace character at position N with character at position N+1
,N	,1	password	ppssword	Replace character at position N with character at position N-1. Where N > 0.
<N				Reject (skip) the word if it is greater than N characters long
>N				Reject (skip) the word if it is less than N characters long
aN				Check all possible symbol cases for the word. N is a maximal length of the word to apply this rule for.
DN	D2D 2	password	paword	Delete the character at position N
pN	p3	key	keykeykey	Copy word N times
TN	T1T 5	password	pAsswOrd	Toggle case of the character at position N
yN	y3	password	paspasword	Duplicate first N characters
YN	Y3	password	paswordord	Duplicate last N characters
zN	z3	password	ppppassword	Duplicate the first character of the word N times

Rule	Example	Input	Output	Description
ZN	Z3	password	passworddd	Duplicate the last character of the word N times
\$X	\$0\$0\$7	password	password07	Add character X to the end of the word
^X	^3^2^1	password	123password	Insert character X at the beginning of the word
@X	@s	password	paword	Remove all characters X from the word
!X				Reject (skip) the word if it contains at least one character X
/X				Reject (skip) the word if it does not contain character X
(X				Reject (skip) the word if the first character is not X
)X				Reject (skip) the word if the last character is not X
eX	e@	mike@yahoo.com	mike	Extract a substring starting at position 0 and ending up before first occurrence of X character (do nothing if X is not found)
EX	E@e.	mike@yahoo.com	yahoo	Extract a substring starting right after first found X character and till the end of the string (do nothing if X is not found)
%MX				Reject (skip) the word if it does not contain at least M instances of the character X
*XY	*15	password	possward	Swap characters at positions X and Y
=NX				Reject (skip) the word if the character at position N is not equal to the X
iNX	i4ai5bi6c	password	passabcword	Insert the character X in position N
oNX	o4*o5*	password	pass**rd	Overwrite a character in position N with the character X
sXY	ss\$so0	password	pa\$\$w0rd	Replace all characters X with Y
xNM	x4Z	password	word	Extract a substring of up to M characters length, starting from position N.
INX-Y	rl0-/r	google.com	google.com	Insert the character X at position N if previous character at position N is not Y.
INX+Y	rl0+.r	password.	password..	Insert the character X at position N if previous character at position N is Y.
ONX-Y	O0-p	password	-assword	If the character at position N is not Y, overwrite it with X character.
ONX+Y	O0P+p	password	Password	If the character at position N is Y, overwrite it with X character.

Additional

The program comes with extended sets of password mutation rules:

hybrid_rules/english_words.ini file contains basic rules for English passwords.

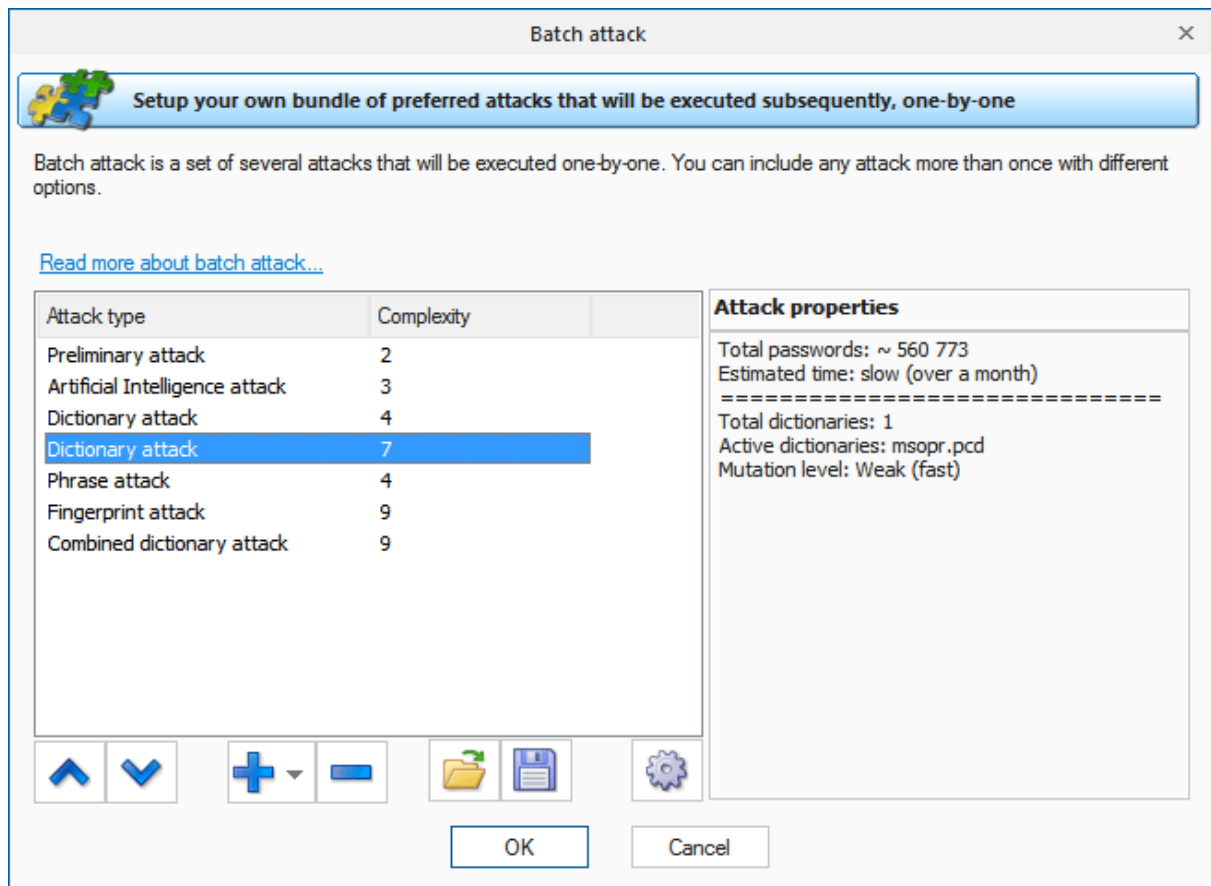
hybrid_rules/simple_dates.ini - a lot of rules with dates, months, seasons, etc.

hybrid_rules/I33t.ini - rules to freak words (based on leet dictionary). For example, password->p@\$\$w0rd
hybrid_rules/dotcom.ini - different internet domains rules
hybrid_rules/numbers.ini - append, prepend numbers, etc.
hybrid_rules/overwrite.ini - extended rules for English words

Looking for a convenient way to handle as much passwords as possible? Downloading the [full set of more than 180000 sorted and duplicate-free rules](#).

2.8.2.11 Batch attack

Since each attack covers its own password range, sometimes, in order to perform complete password recovery, you have to run several different attacks one after another. The basic idea behind the batch attack (developed by Passcape Software) is to create a list/batch of attacks to be run one after another, so that you could launch all those attacks with a single click of the mouse and not hassle with configuring each of them individually every time you need them.



The batch attack options are available as a list that you can extend or cut (buttons [+] and [-]). Each attack on the list can be moved up or down (buttons [^] and [v]), and its settings can be edited. A batch can include several attacks of the same kind, but the attacks can have different settings. The pane to the right of the selected entry displays the properties of the selected entry; brief specifications of the attack and the estimated time the attack will take to complete.

2.9 View menu

The View menu enables/disables the auxiliary elements of the interface, change the interface language, minimize the application to the tray or run it in the invisible mode.

2.10 Themes menu

You can select here one of the themes you've liked or create your own theme.

2.11 Help menu

In this section of the menu, you can access the help articles on using the software, visit the program's home on the Web, check availability of updates, submit a bug report, register the program, etc.

2.12 Hardware Monitor



On this tab, you can view current CPU load and RAM utilization, each GPU load and temperature. By default, the refresh interval is set to 3 seconds. Be careful: gathering these statistics also takes CPU time.

Working with the program

3 Working with the program

3.1 Password recovery methods

Currently the program uses different ways to guess the original password:

Preliminary attack (developed by Passcape Software) is based upon a social engineering method and consists of several sub attacks. Preliminary attack is very fast and often it is used for guessing simple and short passwords when there's no need to launch a fully scalable attack.

Artificial Intelligence attack - is a brand-new type of attack developed in our company. It is based upon a social engineering method and allows, without resort to time-consuming and costly computations, to almost instantly and painless recover certain passwords.

Dictionary attack. It is the most efficient recovery method, when the program tries each word from the dictionary (or dictionaries if there are several dictionaries) you specify until it finds the original password or until the wordlist is out of words. This method is very efficient since many people use regular words or phrases for password. Besides this type of recovery is performed quite fast compared to brute-force attack, for instance. Additional dictionaries and word-lists can be [downloaded from our site](#) or can be [ordered on CDs](#).

Brute-force attack tries all possible combinations from specified range of characters. This is the slowest attack, so it is really great for short passwords and used rarely when recovering passwords for modern Microsoft Office applications.

Mask attack is a variation of the brute-force attack, except that some characters for finding the password remain unchanged, and only a portion of the password may change. The special syntax is used for setting a mask or rule for finding a password.

Base-word attack (developed by Passcape). At the first glance, this type of attack reminds the one we just described. It is just as efficient if a portion of the password to be recovered is known to us. However, unlike in the previous attack, here you do not have to set a mask - just provide a basic word. The program will take care of the rest. The base-word attack is based upon the experience of the social engineering to generate a great number of possible combinations of the given password.

Combined dictionary attack (developed by Passcape) uses to find compound passwords. For example, 'nothintodo' or 'I give up'. It is very similar to the dictionary attack, except that instead of using a single word for password verification it uses a combination of words created by combining words from several dictionaries. You can create your own password generation rules.

Phrase attack (developed by Passcape) is very efficient against complex passwords. The idea of it is to guess the right password by searching through frequently used phrases and combinations. You can download pass-phrase wordlists and dictionaries from our site only.

Fingerprint Attack. Developed by Passcape. The attack parses input wordlist to generate so-called "fingerprints" used to recover the password. The attack is quite effective in finding difficult passwords.

Hybrid dictionary attack is like a simple dictionary attack, but allows user to customize word mutation and set his own password mutation rules. The rule definition syntax is compatible with some other password recovery software.

Batch attack (developed in Passcape Software) creates a list/batch of attacks to be run one-by-one, so that you could launch all those attacks with a single mouse-click instead of configuring each of them individually.

Guaranteed recovery - a password collision search. This attack searches for the password collision that can be used to open documents with 40-bit encryption.

3.2 Attack comparison table

Which attack is the best? How do you choose the attack? The answers to these questions should be found in the attack comparison table.

Attack	Description	Time required	Guaranteed	Pros	Contras	Limitations
Preliminary	A set of light and speedy mini-attacks for finding simple, short or common combinations	Usually several minutes	No	Great quick-find tool for quick recovery of common, simple, short passwords, keyboard combinations, repetitive sequences, etc. Good for finding weak passwords quickly; doesn't require additional settings	Practically useless for serious analysis, when recovering the majority of complex passwords	Finds mainly simple passwords
Artificial Intelligence	The most advanced way of recovering passwords, based on the methods of social engineering.	Min: 5-6 minutes, Max: several days	No	The best tool for finding complex passwords, which other methods cannot cope with. Works great for passwords, words and combinations that the user stored in the system any time in the past.	During the most efficient analysis, when all the options are set to the maximum performance, the attack takes considerable time. Finds not all passwords.	Efficient only when run on the original system (where the passwords were taken)
Brute-force	Searches all possible combinations within a specified character set	Depends on options, several days min.	Yes	The only attack (along with the mask attack) that is guaranteed to recover a completely unknown password. Good for any short and medium passwords	Takes considerable time. Hard to guess the right range of characters to be searched.	May take centuries to search long passwords. Does not find passwords when uses wrong character set or password length exceeds the

one specified.

Dictionary	Finds password by searching words from predefined dictionaries (word-lists)	A couple of minutes	No	Good and speedy tool for recovering common passwords	Requires having good dictionaries, does not take into account letter case	Finds only common passwords
Dictionary with smart mutation	Same as dictionary attack, except here each word from the dictionary undergoes all kinds of mutations. For instance, appending numbers, changing letter case, deforming (displacing) letters, etc.	Up to 1000000 times slower than a simple dictionary attack	No	Good for all sorts of variations of common passwords	The maximum (most effective) mutation takes considerable time	Fails to find strong (non-dictionary) passwords, mutation takes considerable time
Mask	Finds passwords by specified mask (password generation rule)	Depends on options	Yes	Guaranteed to recover the remaining portion of a password. Good option when some portion of the original password is known.	Requires having the exact known portion of the password and its length and specifying the right character set to be searched	Password will not be found if a wrong character set, incorrect password length or incorrect known portion of the source password is specified
Combined dictionary	Checks complex passwords (composed of two or more words) by gluing words from several dictionaries	Depends on options	No	The only attack that finds long and complex passwords	Limited set of field-specific dictionaries. With a large source dictionary, the attack takes considerable time.	Requires to know in advance that the password being searched for consists of two or more words; very slow

Combined dictionary with smart mutation	Same as combined attack, plus mutations	Depends on options	No	Same as the previous attack	Same as the previous attack. Requires setting additional mutation rules for the passwords to be generated	Same as the previous attack; mutations require considerable time
Base-word	Takes advantage of a known base word used for making up the password	Usually couple of hours if the base-word length is not exceeds 16 characters	No	Good for the cases when you had known the original password but have forgotten its variations, e.g., letter case or trailing numbers	Mutation for long passwords (over 16 characters) may take some time	Does not always work
Phrase	Same as dictionary attack, except that instead of a word this one checks a phrase, popular expression, excerpts from songs, books, etc.	Min several minutes and up to several days	No	The only attack against password phrases.	Only a small percentage of users use pass-phrases as the passwords. The mutation and analysis take considerable time. Insufficient number of relevant dictionaries.	Limited choice of mutations. Difficulty in the creation of specialized dictionaries.
Fingerprint	Based on fingerprints that were generated out of the given wordlist	Min several hours and up to several years (depends on the initial dictionary)	No	Finds complex passwords that were impossible to recover in other attacks	Big input dictionary may generate too much fingerprints. The success depends on the input dictionary.	The attack take too much time to complete when setting a big input wordlist.
Hybrid dictionary	It is much similar to simple dictionary attack, except that the password mutation rules	Depend on the source wordlist and rules counter. Usually	No	Good for all sorts of variations of common passwords	Cannot recover complex passwords.	Fails to find strong (non-dictionary) passwords

are fully customizable and should be set by user. up to several hours for a small wordlist.

3.3 GPU FAQ

Q: What are the system requirements for the program?

A: Currently the program supports NVidia video cards with CUDA compute capability 3.0 or higher and AMD/ATI Radeon 7xxx or higher GPUs. The full list of CUDA supported devices can be found at developer.nvidia.com/cuda-gpus. Compatible AMD Radeon cards are shown here: wikipedia.org/wiki/Comparison_of_AMD_graphics_processing_units.

Q: What versions of Windows the program supports?

A: GPU acceleration is supported starting up with Windows XP (NVidia GPUs) and Windows Vista (AMD GPUs) on both 32-bit and 64-bit systems.

Q: How do I know which architecture does my video card support?

A: For NVidia devices:

Launch the program, open the menu 'Options - General Options,' select the 'GPU Settings' tab, select 'NVidia CUDA' platform and choose your video card here. The 'Compute capability' field in the description section should display your GPU architecture.

For AMD devices:

Launch the program, open the menu 'Options - General Options,' select the 'GPU Settings' tab, select 'AMD OpenCL' platform and choose your video card here. The 'CL_DEVICE_VERSION' and 'CL_DEVICE_OPENCL_C_VERSION' fields should display your GPU architecture supported.

Q: Where can I get the latest video drivers?

A: You can download the latest drivers from NVidia (<https://www.nvidia.ru/drivers>) and AMD (<https://support.amd.com/us/gpudownload/Pages/index.aspx>) web sites.

Q: Where can I read more info about CUDA?

A: [Wikipedia site](https://wikipedia.org/wiki/CUDA) is a good starting point to start from.

Q: Where can I read more info about AMD/ATI Radeon cards?

A: wikipedia.org/wiki/Comparison_of_AMD_graphics_processing_units

Q: After I launch a GPU-based attack, my computer freezes or crashes into BSOD. What's the problem?

A: The problem may be caused by the following reasons:

- Your video card had been overclocked, and it was malfunctioning at high load. If that's the case, bring the frequencies of the video memory/cores to its defaults.
- Insufficient or ineffective cooling of your card. When you launch a GPU-based attack, the program utilizes the most of the GPU power, and the GPU temperature rises to a critical level. Make sure that your video card is well cooled, the GPU slot and your system unit are free from dirt and dust. An unwise use of some video settings may have a negative impact on the video card's temperature and its stability under high load conditions. For example, some applications reduce the fan speed to minimize the noise, which does result in noise reduction, but also increases the core temperature.

- Power supply problem. Your card can consume a lot of energy at full load, and the power supply unit may be unable to handle such a high demand for power. If the video card has additional 6-pin or 8-pin power connectors, make sure they are all properly connected.
- There's yet another issue with GPU kernel execution timeout. The program should ask you to adjust the settings upon first call to GPU recovery. Otherwise you should change the WDDM registry settings yourself, for example, by disabling the kernel timeout.

Q: Does the PCI-Express bus have any impact on the performance?

A: Actually, this impact is negligible. It's usually masked by other factors. So the generation of your PCI-Express bus and its performance don't matter much.

Q: Does the amount of video memory matter?

A: No, it doesn't. However in most cases, your GPU should have at least 256 Mb of video memory.

Q: A GPU-based attack slows down my PC so I can barely use it. How can I fix it?

A: As a permanent fix, install a second video device, provided that you have a second slot on your motherboard and that your power supply unit can handle the additional load. For example, you can use some cheap card as the primary one (for displaying information on your monitor), and a second, more powerful one, for brute-forcing passwords.

Q: I have more than one video cards in my computer. Can I use them all for brute-forcing?

A: Yes. You can use all or some of them. Just open general settings and specify the GPU device(s) to be used by the program.

Q: What's the maximal number of GPU devices does your program support?

A: It depends on your hardware. Even though the program supports up to 255 devices, typically, up to 8 devices can be installed into a 4 PCI-E slot motherboard (4 double-GPU cards).

Q: Can I brute-force passwords on devices which performance varies a lot? Say, GT8600 and Radeon HD 7970?

A: Yes, you can.

Q: The program can not detect my video card. What can I do?

A: Update your video drivers. If it didn't help, try to extend your desktop to all devices (if you have more than one device). Re-plug your device into another PCI-Express slot.

Q: Your application will not work with all of my GPUs.

A: You will have to disable SLI in order to be able to use all devices.

Q: Can I use both NVidia and ATI devices simultaneously?

A: Yes, you can use NVidia and AMD/ATI devices simultaneously.

Q: How can I check my GPU utilization?

A: Open 'Hardware Monitor' tab. In 'What to show' drop-box choose the device you need and select 'Show' to display it. You can then click 'Start' or 'Stop' buttons to manage the hardware monitoring. The GPU monitor shows device load (utilization), temperature and fan speed.

Q: My NVidia GPU is absent in hardware monitor.

A: You should install/reinstall NVAPI library. Download the library at <https://developer.nvidia.com/nvapi>

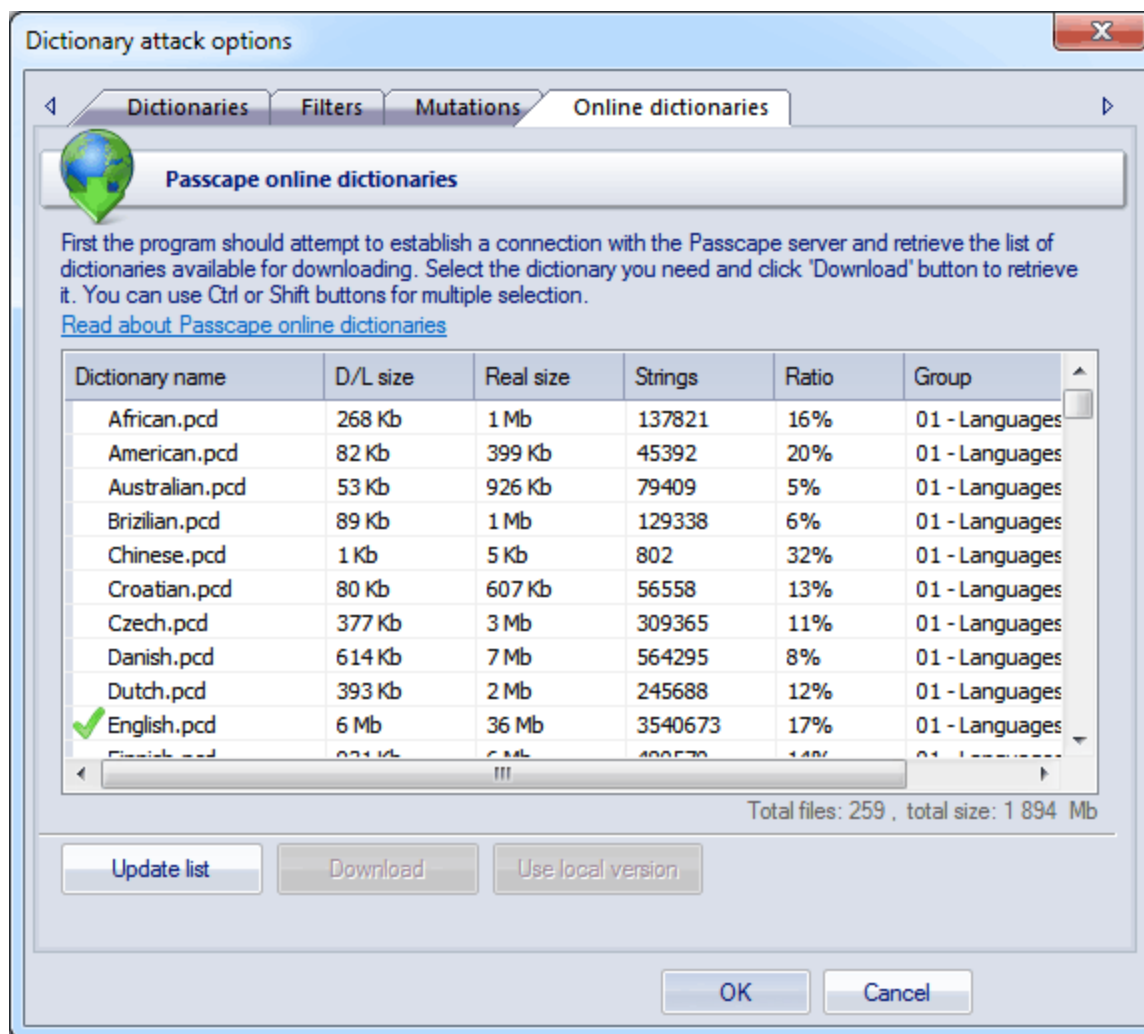
Q: Password recovery speed is much lower than expected.

A: You should have at least one free CPU core to handle one GPU core. Otherwise performance may drop drastically. Consider also trying to turn off CPU usage completely: menu *Options - General Options - CPU Settings*, set *Processor Utilization* field to 0.

Q: Awful screen lags when brutef Microsoft PowerPoint 2013 passwords. Sometimes shows 0 p/s.

A: It's just because the speed that is required to process one block of passwords is lower than screen update speed. In other words, the program may show 0 p/s because the current block of passwords has not yet been processed since the last update of the screen (3 seconds by default). Unlike GPU recovery which uses password blocks, there are no lags when utilizing CPU because the passwords are processed subsequently one-by-one.

3.4 Online dictionaries



The online dictionary selection dialog is extremely simple. When it opens up, the program attempts to establish a connection with the Passcape server and then retrieves and displays the list of dictionaries available for downloading.

Select the dictionary you need and then click on the 'Download' button to retrieve it and use in the program.

Some of the dictionaries are large. For instance, the size of '*music_songs.pcd*' is more than 59 MB in the compressed format. Naturally, retrieving such a large amount of data may take some time, which depends upon file size, bandwidth of your Internet connection and net load.

All online (and some additional) dictionaries can be [ordered on CD](#). The total size of all the dictionaries is over 10 GB. You can also share your own dictionary with us by e-mailing us the dictionary or the link where it can be downloaded.

The word-list are used in common dictionary attack, combined dictionary and pass-phrase attacks.

License and registration

4 License and registration

4.1 License agreement

=====

SOFTWARE LICENSE AGREEMENT

=====

IMPORTANT-READ CAREFULLY: This is the End User License Agreement (the "Agreement") is a legal agreement between you, the end-user, and Passcape Software, the manufacturer and the copyright owner, for the use of the "PowerPoint Password Recovery" software product ("SOFTWARE").

All copyrights to SOFTWARE are exclusively owned by Passcape Software.

The SOFTWARE and any documentation included in the distribution package are protected by national copyright laws and international treaties. Any unauthorized use of the SOFTWARE shall result in immediate and automatic termination of this license and may result in criminal and/or civil prosecution.

You are granted a non-exclusive license to use the SOFTWARE as set forth herein.

You can use trial version of SOFTWARE as long as you want, but to access all functions you must purchase the fully functional version. Upon payment we provide the registration code to you.

Once registered, the user is granted a non-exclusive license to use the SOFTWARE on one computer at a time (for every single-user license purchased).

With the personal license, you can use the SOFTWARE as set forth in this Agreement for non-commercial purposes in non-business, non-commercial environment. To use the SOFTWARE in a corporate, government or business environment, you should purchase a business license. With the business license you can run the SOFTWARE on multiple computers belonging to your organization - no matter where they are located.

The registered SOFTWARE may not be rented or leased, but may be permanently transferred together with the accompanying documentation, if the person receiving it agrees to terms of this license. If the software is an update, the transfer must include the update and all previous versions.

You may not create any copy of the SOFTWARE. You can make one (1) copy the SOFTWARE for backup and archival purposes, provided, however, that the original and each copy is kept in your possession or control, and that your use of the SOFTWARE does not exceed that which is allowed in this Agreement.

The SOFTWARE unregistered (trial) version may be freely distributed, provided that the distribution package is not modified. No person or company may charge a fee for the distribution of the SOFTWARE without written permission from the copyright holder.

You agree not modify, decompile, disassemble, otherwise reverse engineer the SOFTWARE, unless such activity is expressly permitted by applicable law.

Passcape Software does not warrant that the software is fit for any particular purpose. Passcape Software disclaims all other warranties with respect to the SOFTWARE, either express or implied. Some jurisdictions do not allow the exclusion of implied warranties or limitations on how long an implied warranty may last, do the above limitations or exclusions may not apply to you.

The program that is licensed to you is absolutely legal and you can use it provided that you are the legal owner of all files or data you are going to recover through the use of our SOFTWARE or have permission from the legitimate owner to perform these acts. Any illegal use of our SOFTWARE will be solely your responsibility. Accordingly, you affirm that you have the legal right to access all data, information and files that have been hidden.

You further attest that the recovered data, passwords and/or files will not be used for any illegal purpose. Be aware password recovery and the subsequential data decryption of unauthorized or otherwise illegally obtained files may constitute theft or another wrongful action and may result in your civil and (or) criminal prosecution.

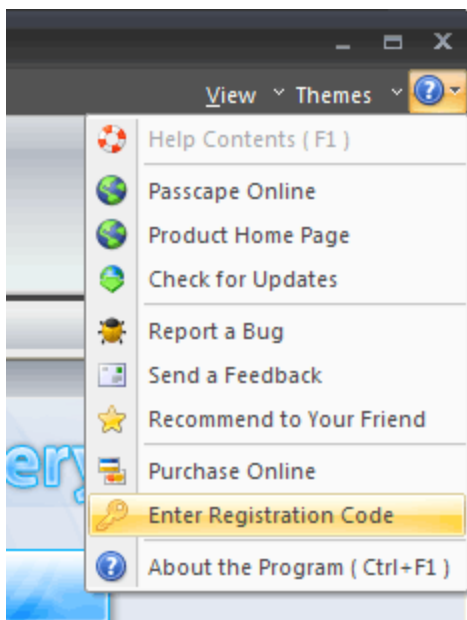
All rights not expressly granted here are reserved by Passcape Software.

4.2 Registration

The software is available in two editions: Standard and Professional. The detailed instruction for all kinds of orders is available online at the [program's order page](#). Online orders are fulfilled in just a few minutes 24 hours a day 7 days a week. If you purchase our products online, you will receive an automatically generated e-mail message with registration details within several minutes (if the order passes the fraud check system). However some orders can be marked for manual checkout or as 'suspicious'. This may increase order time up to several hours.

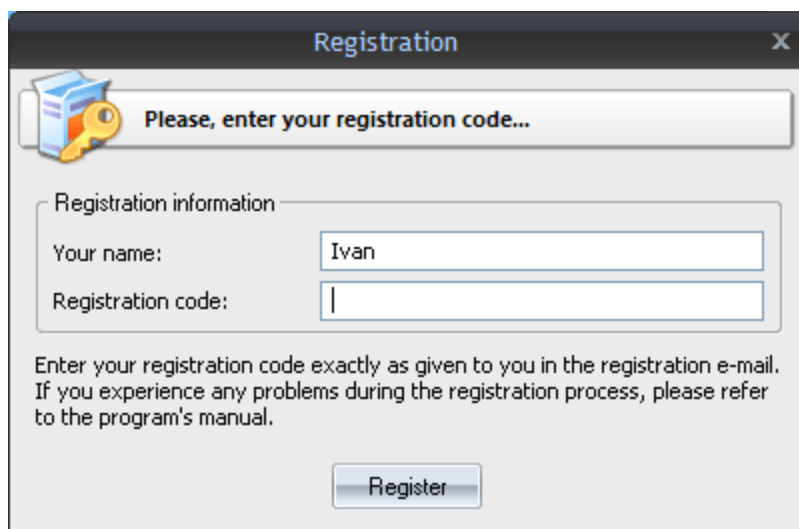
Important: when completing the order form, please double-check that your e-mail address is correct. If it will not, we'll be unable to send you the registration code

To complete the registration,



- Open the registration message and copy the registration code to the Windows clipboard.
- Run the program, select **Help - Enter Registration Code**

- Type in your registration name and paste the code here
- Click **Register** button to confirm

A screenshot of a software registration dialog box titled "Registration". It features a key icon and the text "Please, enter your registration code...". Below this, there is a section for "Registration information" with two input fields: "Your name:" containing the text "Ivan" and "Registration code:" which is empty. A "Register" button is located at the bottom. A note at the bottom of the dialog states: "Enter your registration code exactly as given to you in the registration e-mail. If you experience any problems during the registration process, please refer to the program's manual."

4.3 Limitation of unregistered version

An unregistered version of the program shows only first 3 characters of recovered passwords and has some functional limitations. Registered version of the program eliminates all restrictions. Please refer to [this page](#) to view restrictions of certain edition.

4.4 Editions of the program

The program comes in two editions: Standard and Professional. The detailed list of features and compatibility chart is shown below.

FEATURE	Standard	Professional
Support for Microsoft PowerPoint 97 - 2019 documents	+	+
Instant removal of passwords for editing documents and VBA macros (PowerPoint 2007 and newer only)	+	+
Support for Windows XP - Windows 10	+	+
Windows 64-bit support	+	+
Multithreaded recovery	+	+
Interface themes support	+	+
Search for plaintext passwords	+	+
Export found passwords to text file	+	+

Common attacks	+	+
Advanced attacks	+	+
Smart attacks	+	+
Number of CPU cores supported	2	32
Number of GPU devices supported	1	255
Batch attack	-	+
View AI password cache	-	+
Online dictionaries	+	+
Generate dictionaries by mask	-	+
Generate dictionaries by given base-word	-	+
Combined dictionaries generator	-	+
Pass-phrase dictionary generator	-	+
Fingerprint dictionaries generator	-	+
Create wordlists based on hybrid attack	-	+
Create wordlists based on simple dictionary attack	-	+
Restrict access to the program	+	+
Password strength measurement	+	+
Password checker	+	+
Asterisk password viewer tool	+	+
Wordlist tools: create a wordlist by indexing files	-	+
Wordlist tools: merge wordlists	+	+
Wordlist tools: wordlist statistics	+	+
Wordlist tools: sorting	+	+
Wordlist tools: conversion/compression	+	+
Wordlist tools: wordlist comparison	+	+
Wordlist tools: additional operations	+	+
Wordlist tools: indexing words/passwords of HDD sensitive areas	-	+
Wordlist tools: HTML links extractor	+	+
Guaranteed password recovery (for documents with 40-bit encryption key)	+	+
Hardware monitor	+	+
Password reports	-	+
Run in hidden mode	+	+
14-days money back guarantee	+	+
License	personal	business
Price	\$29	\$99

* - uses some restrictions

Technical support

5 Technical support

5.1 Reporting problems

If you have a problem, please contact us at support@passcape.com. Please inform us about the following:

- Full name and version of the program
- Windows version including service pack, OEM and language information, etc.
- Registration information if any
- Detailed description of the problem, whether it is a constant or spontaneous error
- If you're reporting a critical error, please attach Crash.log file that was saved during an unhandled exception session.

5.2 Suggesting features

If you have any questions, comments or suggestions about the program or would like more information, email us at info@passcape.com. Please don't forget to mention the program name and version. Also make sure you have the latest program version installed. Your feedback helps us to improve our products and work more effective.

5.3 Contacts

Please don't hesitate to send your questions regarding our products to e-mail support@passcape.com. You will get reply during one or two days. Note, that registered users have priority in technical support.

If you experience any problems during registration process, please send a letter to sales@passcape.com

We will be happy to assist you with the registration.

Please write in English!

You can find other password recovery utilities at <https://www.passcape.com>

- | -

interface, program 9