

# Outlook

© 2006 Passcape Software  
Passcape Software

1.		3
2.	PST	3
3.	PST	5
4.		7
4.1	.....	8
4.2	.....	8
4.3	.....	9
4.4	.....	10
5.		11

1

" , , : Y6dh!et5. : House27" MS Office Outlook

PST Outlook.

Outlook

Windows

2

PST

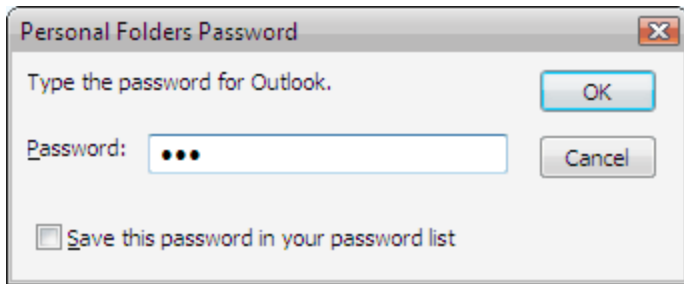
.PST Microsoft Office Outlook

.PST

.PST

15 ( .PST 1).

.PST



1. PST

.PST

Windows

( .PST 1),

**CRC32.** CRC32 -  
Microsoft

, **SHA-1.**

Outlook, MS

Outlook 2003 (Unicode

.PST Outlook 2003

64

32  
CRC32:

`DWORD CPstReader::Crc32( LPBYTE pPassword )`

```
{
    assert( pPassword );

    //set initial crc to zero
    DWORD crc=0;

    //till the end of string
    while ( *pPassword )
        crc = (crc>>8) ^pCRCTable[(BYTE)crc ^(*pPassword++)];

    return crc;
}
```

(pPassword),

CRC32

32

1 orxgnm

mozart

2920347097.

Outlook,

Y6dh!et5  
- JISfw.

5

.PST

Crc32("ArTniW")=0. : 1Rj78C, 5J8j84, ArTniW. Crc32("1Rj78C")=0, Crc32("5J8j84")=0,

.PST  
?

Outlook

3

PST

PST

( 2),

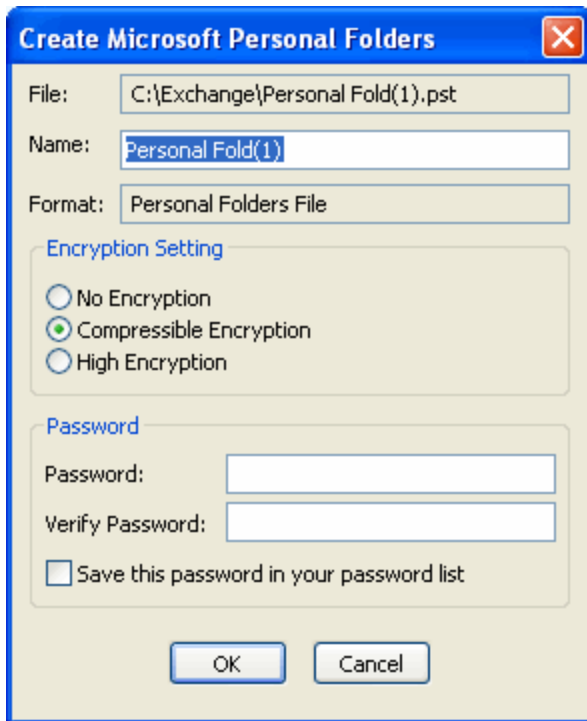
Outlook

.PST

.PST, Outlook

3

- 1.
- 2.
- 3.



2.

PST





), Opera  
Thunderbird, Opera M2, Outlook Express.

**MD5 + RC4, SHA + 3DES,** Thunderbird, Opera M2,  
Outlook Express

( )  
Outlook ( Outlook Express),  
Outlook :

- 
- 
- 
- 

#### 4.1



BASE64.

#### 4.2



- Outlook 9x -



4.3

- Outlook 2000 -

**(Protected Storage) Windows.**

Protected Storage

1. SHA(Salt). key1 SID - SHA(Salt) + SHA(SID) +
2. SHA(key1). key2 MKSalt - SHA(MKSalt) +
3. DES key1 - 20 key2
4. 16

( )

- ( 1-3).
- SID
- SID ( ) SID
- 10 rainbow tables.

Internet Explorer 4, (Opera, Mozilla, Firefox Internet Explorer 6 ) Outlook

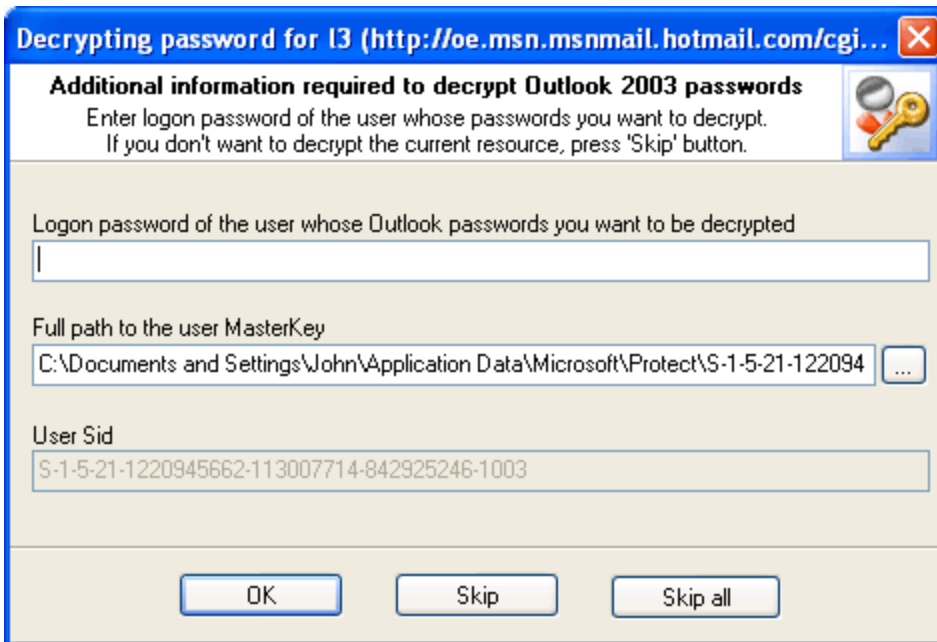
4.4

- Outlook 2003 -

Windows.

( . , 3):

- 1.
2. SID
- 3.



3. Outlook 2003

:

- - 512 ,
  - SHA\_HMAC,
  - ( , 4000).
  - ( , )
  - 
  - 
  -
- Windows.

5

Microsoft  
**Outlook 2003.**  
 PST  
**Outlook 2007?**  
 Outlook 9x ( Windows  
 Outlook 2003.  
 Outlook 2003, Protected  
 Storage +