

Internet Explorer 7- 9

© 2007 Passcape Software
Passcape Software

1.			3
2.	1:		4
3.	2:		5
4.	3:		7
5.	4:		8
5.1		10
5.2		11
5.3		12
5.4		13
5.5		14
6.	5:		15

1

Internet Explorer 7 (IE8 - IE9

[Passcape Internet Explorer Password Recovery.](#)

- 1.
- 2.
- 3.
- 4.
- 5.

, ...

2

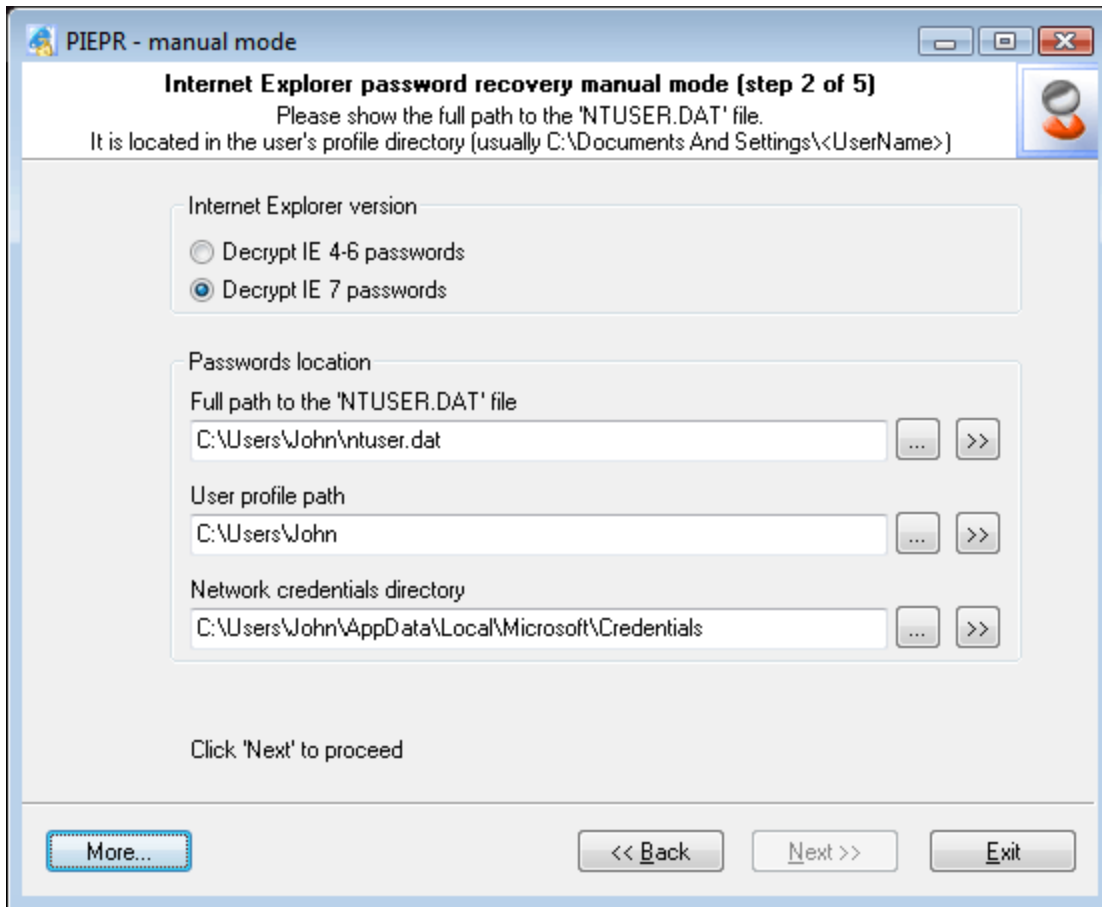
1:



1

3

2:



1. ntuser.dat,
 - IE 7-8 ()
 - 4). Windows XP-2003 : C:\Documents And Settings\%USER%\ntuser.dat,
 - Vista : C:\Users\%USER%\ntuser.dat.

2. ()

3. **Network credentials directory** - Windows Credentials Manager

Windows Live (.Net Passport), Exchange
 Network Credentials Directory, Web
 Internet Explorer 7 Wininet
 Credentials. Wininet Credentials
 IE.

Windows XP-2003 Wininet Credentials :
 C:\Documents And Settings\%USER%\Application Data\Microsoft\Credentials\%SID%
 C:\Documents And Settings\%USER%\Local Settings\Application Data\Microsoft\Credentials\%SID%.

%USER% - Windows, %SID% -
 SID

Windows Vista SID Network Credentials Directory
 Wininet Credentials :

C:\Users\%USER%\AppData\Local\Microsoft\Credentials

C:\Users\%USER%\AppData\Roaming\Microsoft\Credentials

Network Credentials Directory:

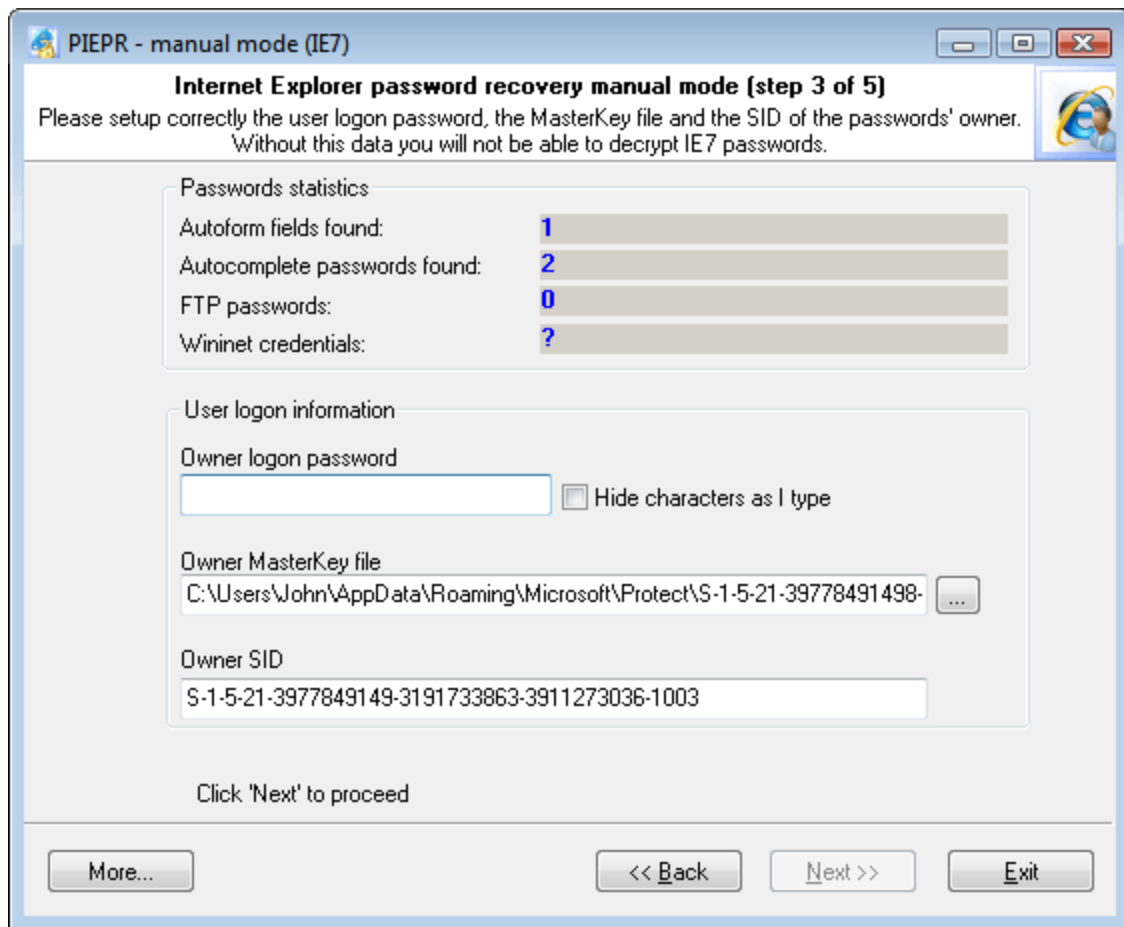
C:\Users\John\AppData\Local\Microsoft\Credentials

D:\Documents and Settings\Kate\Application Data\Microsoft\Credentials\ S-1-5-21-1927147842-1992852531-225342917-1003.

Network Credentials Directory
 [>>] ,

Network Credentials Directory,

Directory, [...]. Network Credentials



Explorer.

'Password Statistics'

Internet

Wininet Credentials

- 'Network Credentials Directory'
- 'User logon information',

'Owner MasterKey file' 'Owner SID'

Windows XP-2003:

C:\Documents and Settings\%USER%\Application Data\Microsoft\Protect\%SID%

Windows Vista+:

C:\Users\%USER%\AppData\Roaming\Microsoft\Protect\%SID%

Owner SID, , %SID%.

'User logon information',
'Next >>'

Wininet credentials,

5

4:

Internet Explorer 7

IE,

FTP Wininet

IE 7

1. Internet Explorer Web URL hash=sha(URL).
2. URL (Unicode), DPAPI EncryptedPassword=DPAPI(URL,password).
3. EncryptedPassword hash,
4. URL

URL

URL
(URL)

Internet Explorer?

, IE

hash URL
(hash + EncryptedPassword),

URL


```

      ,
      URL
      html
      html
      ,
      .

```

```

<table><tr>
<td><input type="text" name="loginname" value=""><br></td>
<td><input type="password" name="pwd" value=""><br></td>
</tr></table>

```

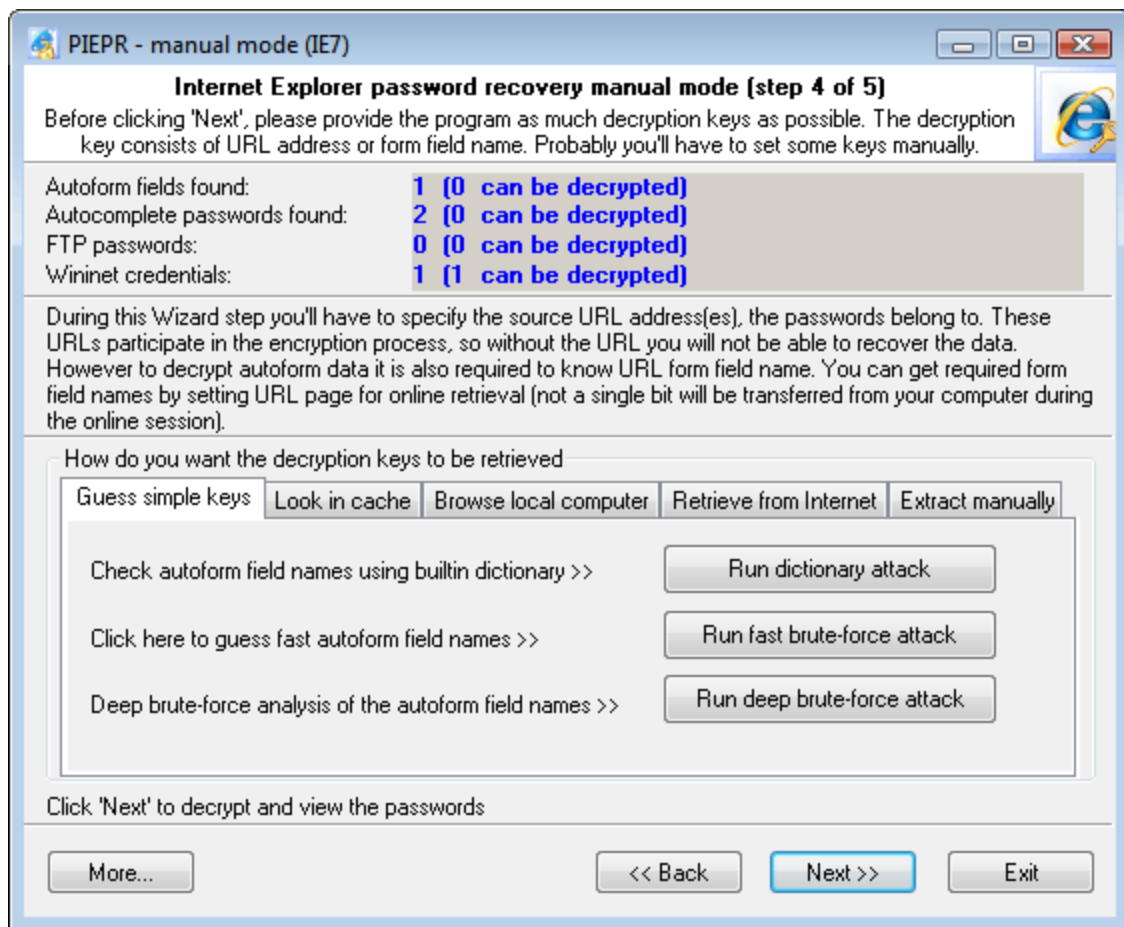
loginname.

```

      ,
      IE 7,
      ,
      ,
      (
      ,
      ).
      ,
      ,
      .

```

5.1



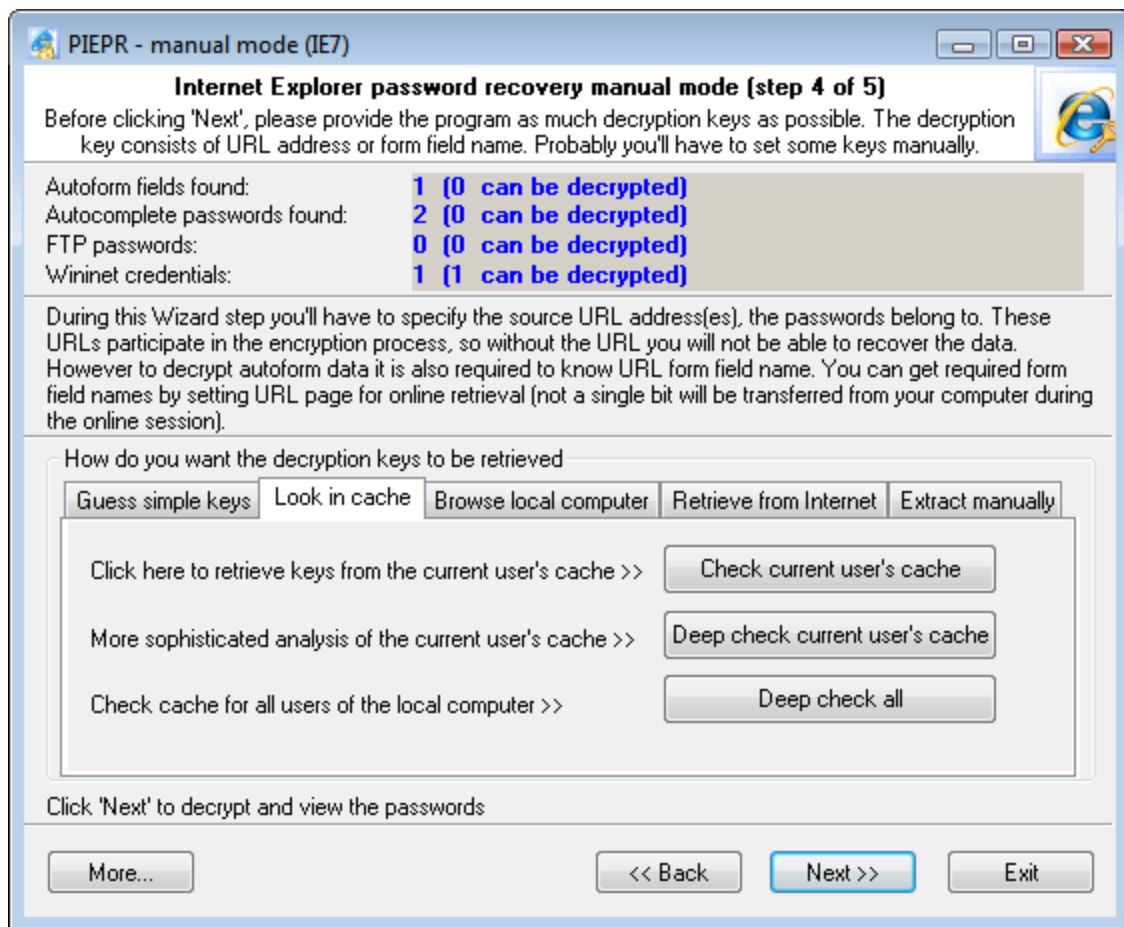
dictionary attack'

'Run

(5)

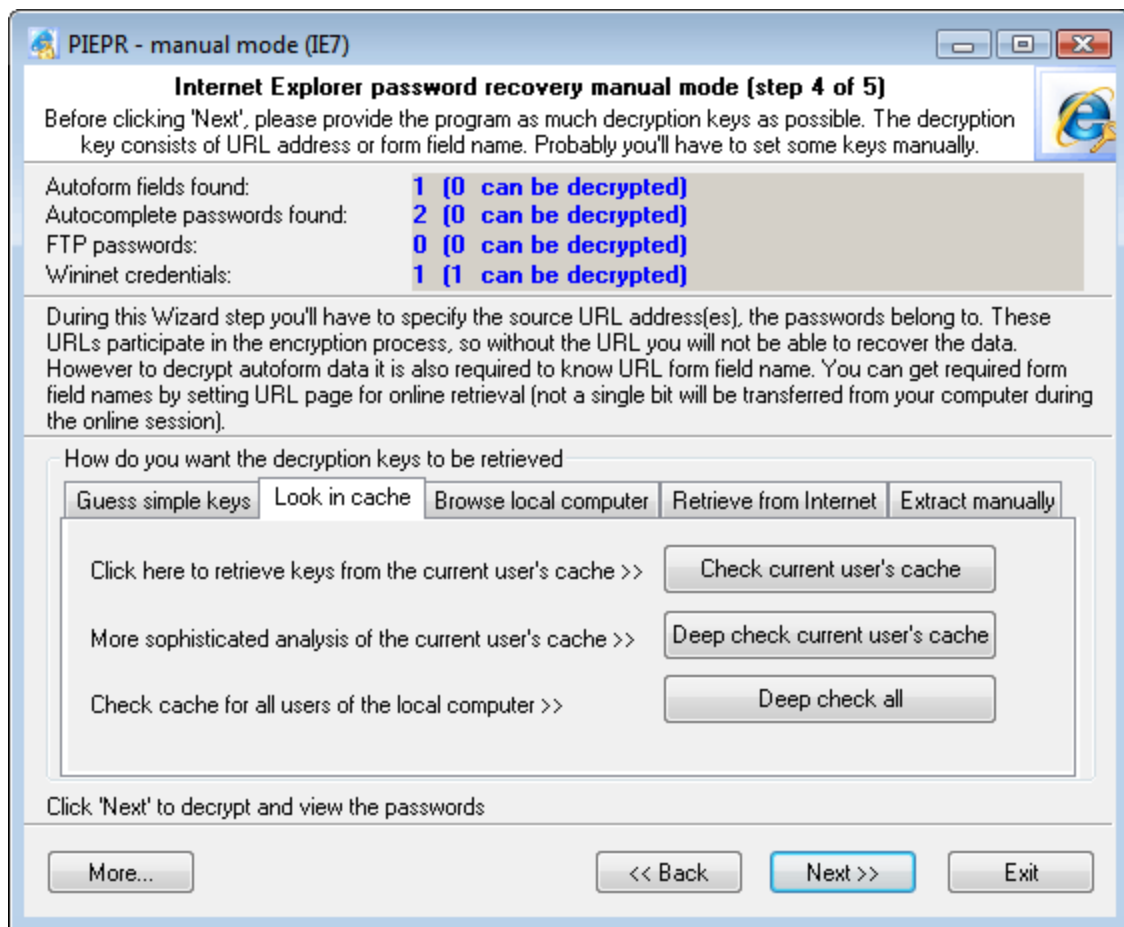
smart mutations.

5.2



user's cache') IE . ('Check current
 cache'. , 'deep check current user's
 API. , Windows
 , 'deep check all',

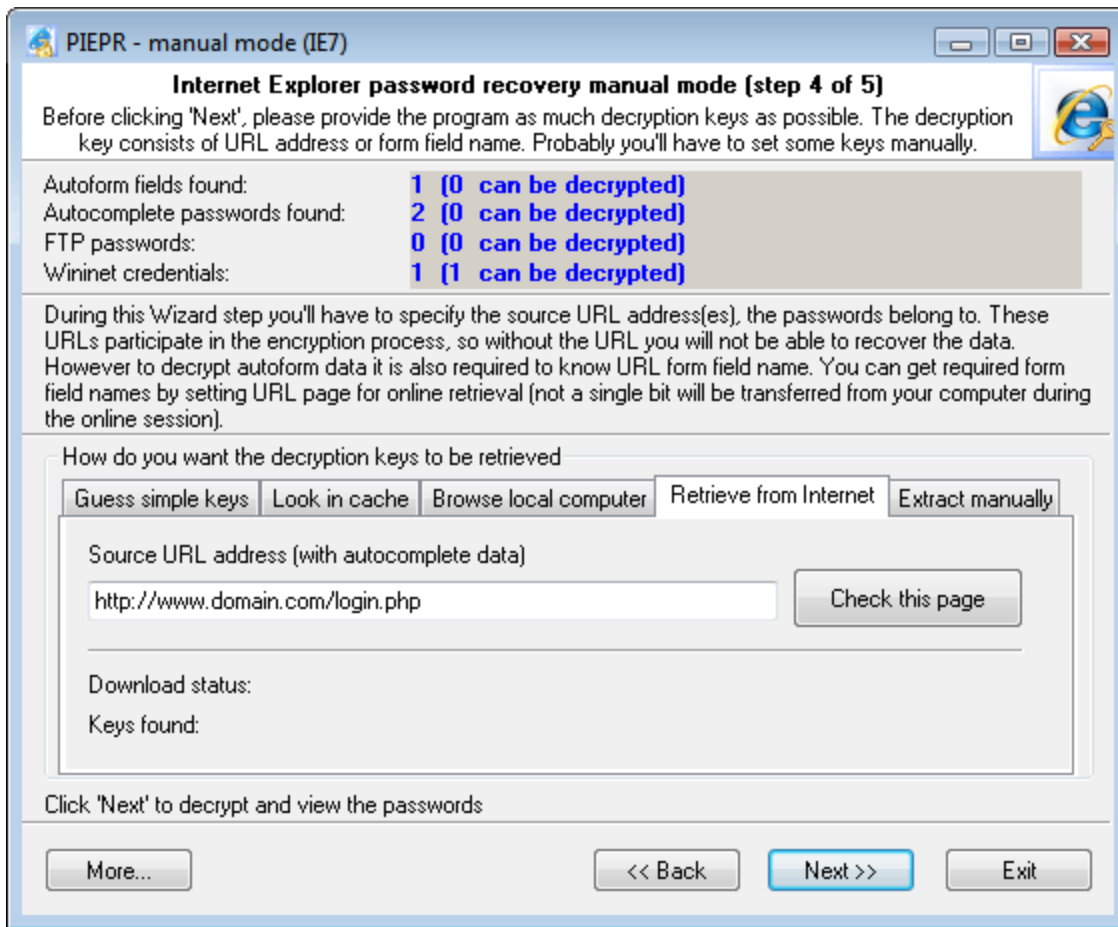
5.3



Opera (C:\Documents and Settings\%USER%\Application
Data\Opera\Opera\profile\cache4).html

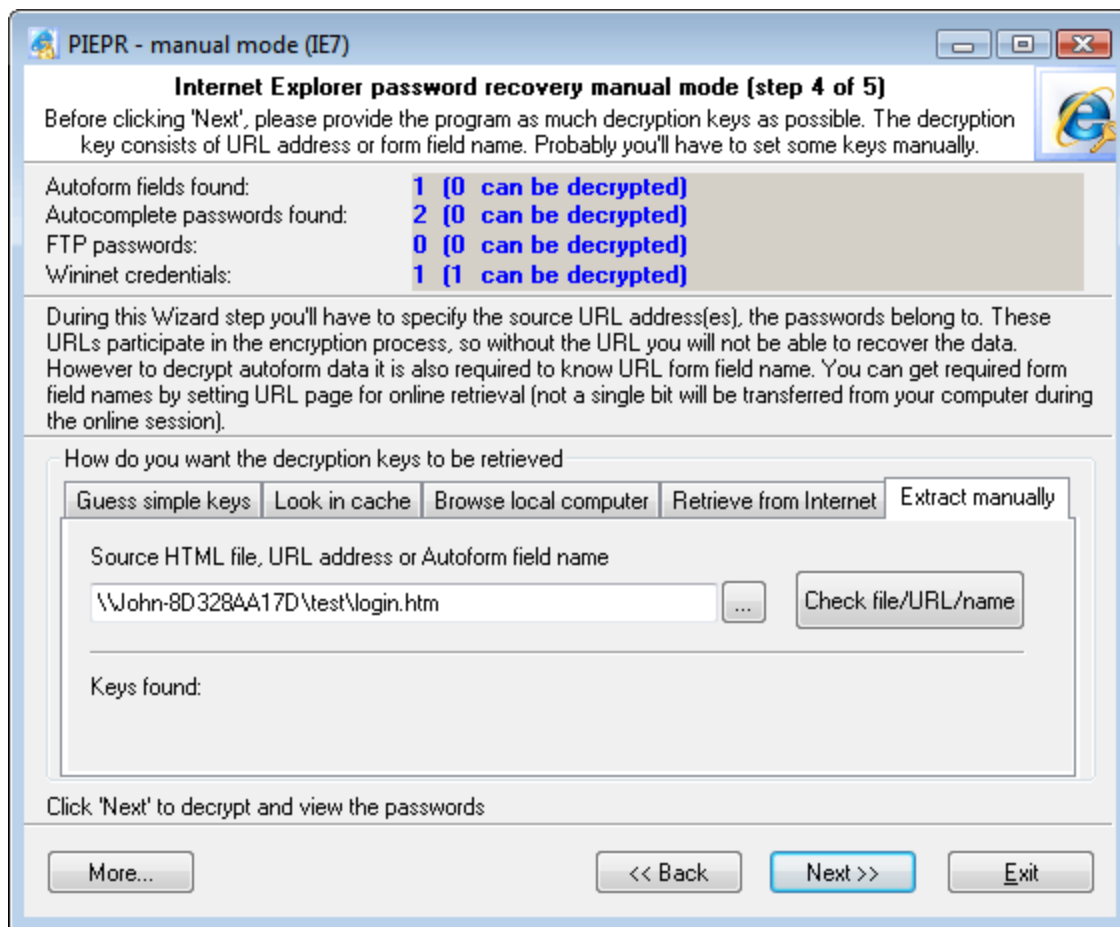
Internet Explorer,
html

5.4



(,) ,
 URL
 'Check this page'.
 URL,

5.5



• **html**

• **URL**

• **html**

Guess simple keys,

IE, html

'Next

>>'

6

5:

