

# **IncrediMail Password Recovery**

## **USER MANUAL**

**Copyright (c) 2022 Passcape Software. All rights reserved.  
Passcape Software**

<b>1. Introduction</b>	<b>3</b>
1.1 About the program .....	4
1.2 Features and benefits .....	4
1.3 System Requirements .....	4
<b>2. Working with the program</b>	<b>5</b>
2.1 Main window .....	6
2.2 Manual recovery mode .....	6
2.3 Passwords window .....	7
2.4 Asterisks passwords revealer .....	7
2.5 Setting a Program Access Password .....	8
2.6 Program Interface Language .....	9
<b>3. License and registration</b>	<b>11</b>
3.1 License Agreement .....	12
3.2 Registration .....	13
3.3 Limitation of unregistered version .....	14
<b>4. Technical support</b>	<b>15</b>
4.1 Reporting problems .....	16
4.2 Suggesting features .....	16
4.3 Contacts .....	16

# Introduction

## 1 Introduction

### 1.1 About the program

---

If you would ever like to surprise your friend or acquaintance with a talking animated message, you should take a look at the IncrediMail.

IncrediMail is surprisingly colorful program for creating animated e-mail messages. Probably, one of the best of a kind. Besides, it has one more unquestionable advantage: it is free.

If you are lucky to have this program and you happen to forget your mailbox password, do not worry. **IncrediMail Password Recovery** is a small utility that recovers IncrediMail lost passwords. **IMPR** supports all versions of this popular program and all types of passwords it saves, including Identity passwords.

### 1.2 Features and benefits

---

With this program you can:

- Recover all IncrediMail passwords: POP3, IMAP, SMTP, mailbox passwords
- Choose between two (automatic and manual) recovery modes
- Export passwords to text html or excel files
- Prevent an unauthorized program execution
- Reveal passwords hidden behind asterisks.

### 1.3 System Requirements

---

#### Requirements

Windows NT+, less than 2Mb on your hard drive.

#### Compatibility

IncrediMail all versions

#### Known issues or bugs

The program although contains no harmful code, may be detected by some anti-virus/anti-spyware software as potentially dangerous or "potentially unwanted program". This is also known as "False Alert", and it's quite a common problem for all password recovery software.

## **Working with the program**

## 2 Working with the program

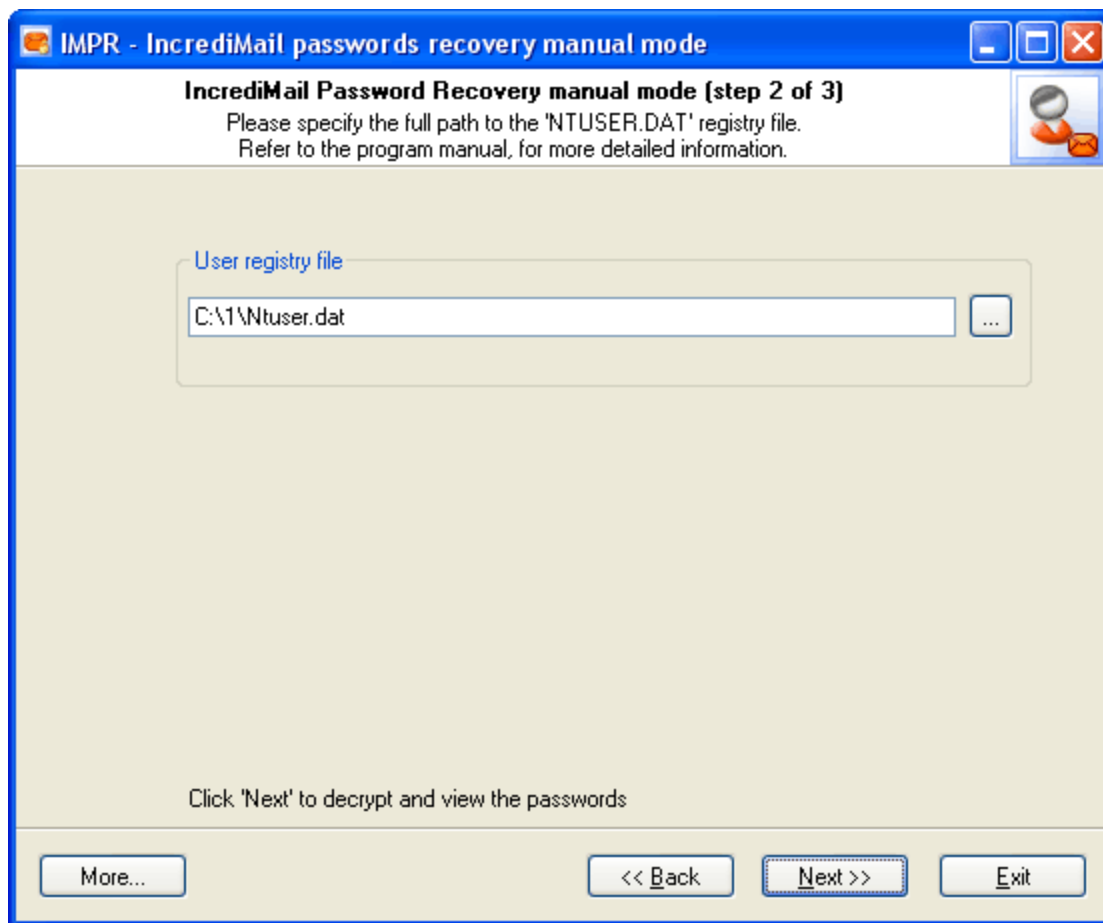
### 2.1 Main window

Main window of the program allows you to choose a recovery mode:

- [AUTOMATIC](#) - recover all found IncrediMail passwords (no additional steps required)
- [MANUAL](#) - decrypt IncrediMail passwords manually
- [ASTERISKS](#) - reveal text hidden behind \*\*\*\*

### 2.2 Manual recovery mode





IncrediMail stores its encrypted passwords in the Windows registry. Thus you'll have to provide the **IMPR** with the registry files. Old versions of IncrediMail store passwords in Software registry hive. It is usually located in C:\Windows\System32\Config directory, where C:\Windows is your Windows directory. New versions of the program save the passwords to the ntuser.dat file, which is located in the user profile directory (typically C:\Documents And Settings\<USERNAME>, where <USERNAME> is the name of the user account).

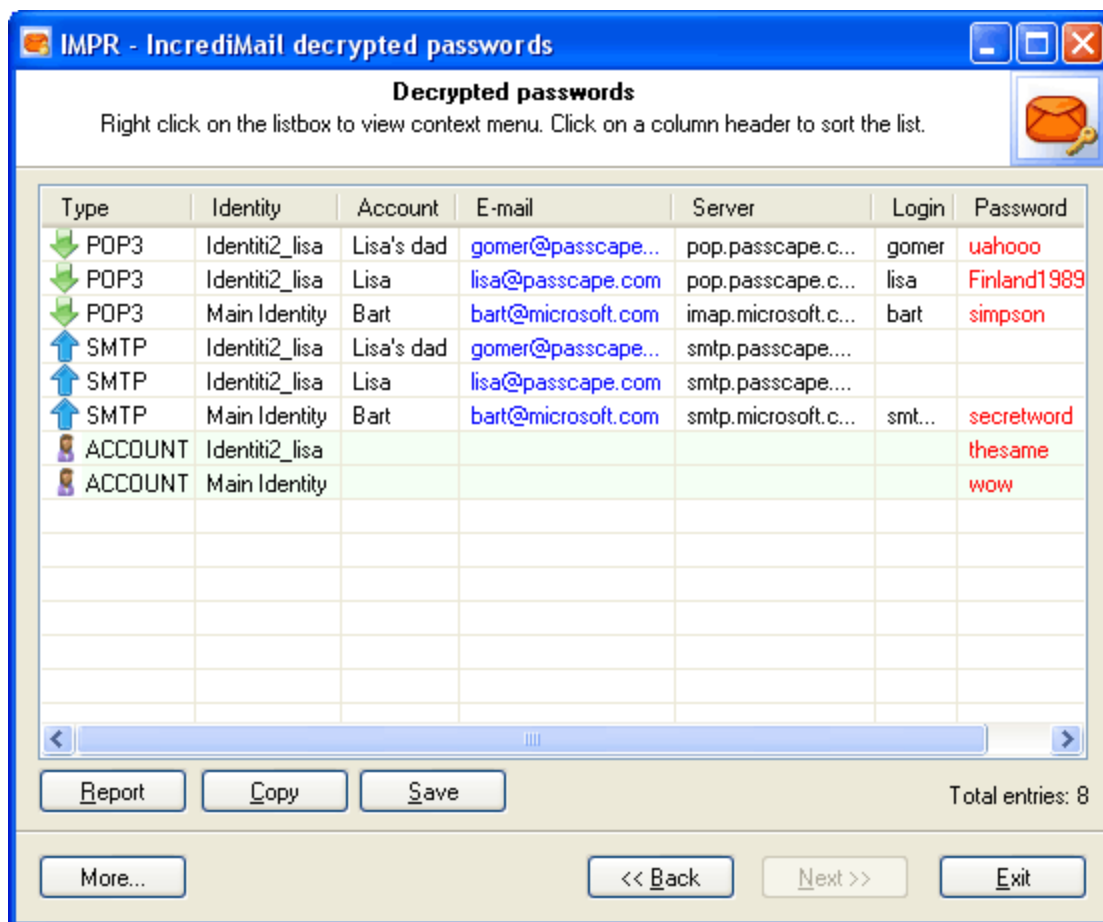


Important! Using the program provided that you are the legal owner of all files or data you are going to recover through the use of our software or have permission from the legitimate owner to perform these acts.

## 2.3 Passwords window

The password window contains found and decrypted passwords of the following types:

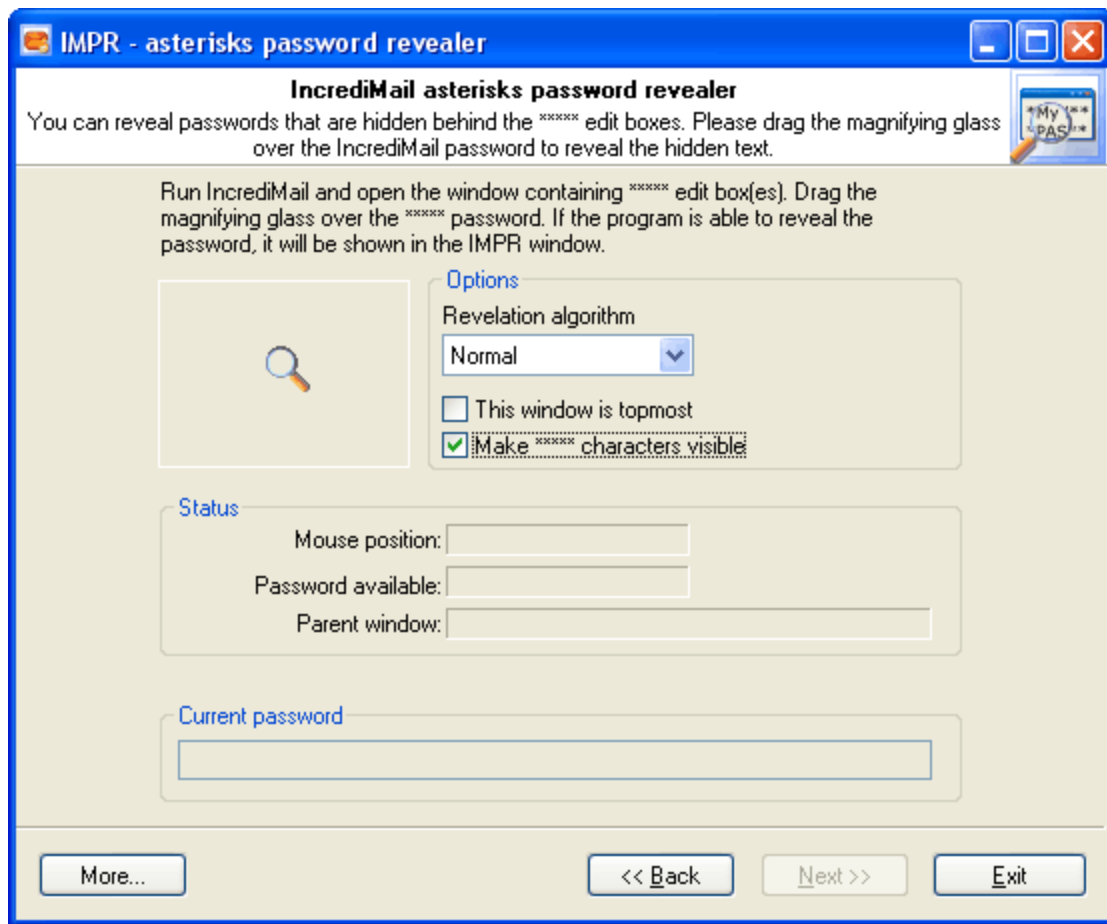
-  - POP3 account
-  - IMAP account
-  - SMTP account
-  - ACCOUNT access password



Right click on the passwords list to view context menu.

## 2.4 Asterisks passwords revealer

Sometimes it is enough just to uncover asterisks to remember your forgotten password. **IMPR** can successfully unhide such passwords. Just open 'Asterisks password revealer' dialog and drag the magnifying glass to the \*\*\*\*\* password box.



Also note, that you can reveal \*\*\*\*\* passwords for many programs, not only for IncrediMail.

## 2.5 Setting a Program Access Password

Setting an access password can help to avoid the program execution by unauthorized persons. To open the "Set Access Password" dialog box, click 'more...' (in the IMPR main window) and select 'Set/change access password' from the popup menu.



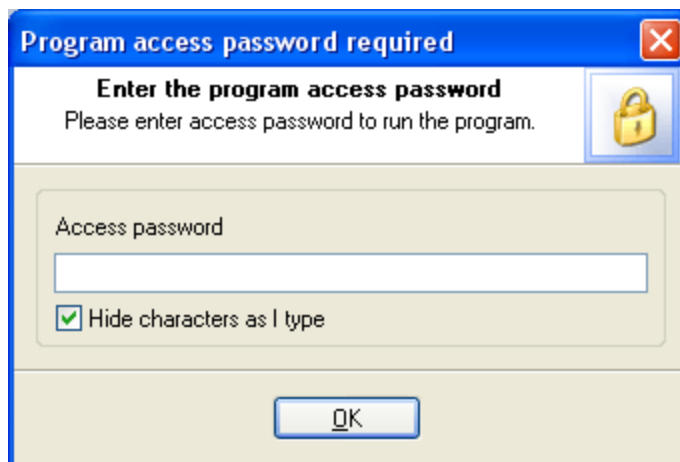


To set an access password, you have to enter a new password and confirm it by retyping it in the confirmation field.

**Remember! The access password is case-sensitive.**

To remove the current password, leave the password fields blank.

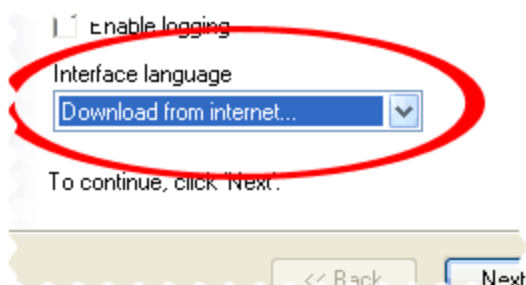
Next time you run the program, you will be asked for the password as shown below:



Type in your current password and click **OK** to run the program.

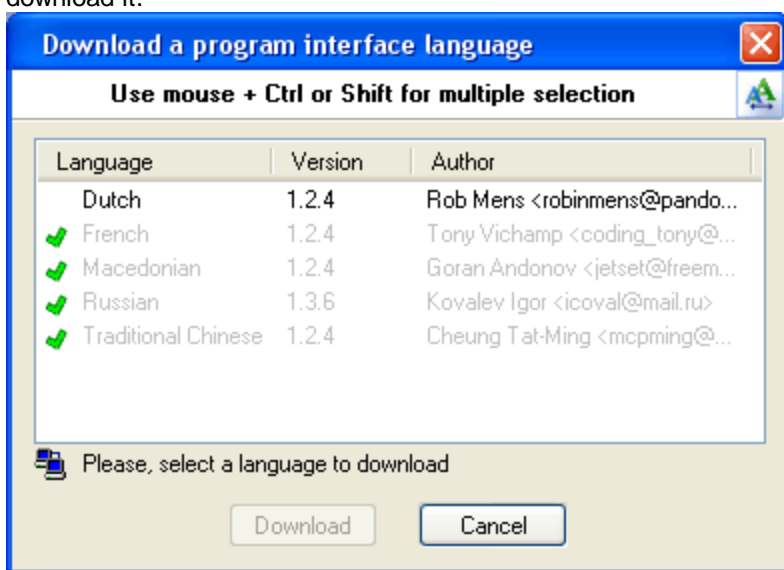
## 2.6 Program Interface Language

You can change the program interface language and download your native language from our web server. Just select **Download from Internet...** from the **Interface Language** drop-down list as shown below.



After that the program will try to establish a connection to the Passcape server and download the list of language files available for the program. We guarantee that nothing will be sent to Passcape (or to anybody else) from your computer.

So you'll see the language selection dialog box where you can select an interface language and download it.



Already downloaded and installed languages are marked with ✓ sign.

If you can translate the interface of the program into some other language, your help will be really appreciated. Translate the program into your native language and get the program registration for free! [Contact us](#) for more information.

## **License and registration**

### 3 License and registration

#### 3.1 License Agreement

---

=====

SOFTWARE LICENSE AGREEMENT

=====

IMPORTANT-READ CAREFULLY: This is the End User License Agreement (the "Agreement") is a legal agreement between you, the end-user, and Passcape Software, the manufacturer and the copyright owner, for the use of the "IncrediMail Password Recovery" software product ("SOFTWARE").

All copyrights to SOFTWARE are exclusively owned by Passcape Software.

The SOFTWARE and any documentation included in the distribution package are protected by national copyright laws and international treaties. Any unauthorized use of the SOFTWARE shall result in immediate and automatic termination of this license and may result in criminal and/or civil prosecution.

You are granted a non-exclusive license to use the SOFTWARE as set forth herein.

You can use trial version of SOFTWARE as long as you want, but to access all functions you must purchase the fully functional version. Upon payment we provide the registration code to you.

Once registered, the user is granted a non-exclusive license to use the SOFTWARE on one computer at a time (for every single-user license purchased).

With the personal license, you can use the SOFTWARE as set forth in this Agreement for non-commercial purposes in non-business, non-commercial environment. To use the SOFTWARE in a corporate, government or business environment, you should purchase a business license. With the business license you can run the SOFTWARE on multiple computers within a single site. A multi site license authorizes you to install and use the SOFTWARE to any number of computers belonging to your organization - no matter where they are located.

The registered SOFTWARE may not be rented or leased, but may be permanently transferred together with the accompanying documentation, if the person receiving it agrees to terms of this license. If the software is an update, the transfer must include the update and all previous versions.

You may not create any copy of the SOFTWARE. You can make one (1) copy the SOFTWARE for backup and archival purposes, provided, however, that the original and each copy is kept in your possession or control, and that your use of the SOFTWARE does not exceed that which is allowed in this Agreement.

The SOFTWARE unregistered (trial) version may be freely distributed, provided that the distribution package is not modified. No person or company may charge a fee for the distribution of the SOFTWARE without written permission from the copyright holder.

You agree not modify, decompile, disassemble, otherwise reverse engineer the SOFTWARE, unless such activity is expressly permitted by applicable law.

Passcape Software does not warrant that the software is fit for any particular purpose. Passcape Software disclaims all other warranties with respect to the SOFTWARE, either express or implied. Some jurisdictions do not allow the exclusion of implied warranties or limitations on how long an implied warranty may last, do the above limitations or exclusions may not apply to you.

The program that is licensed to you is absolutely legal and you can use it provided that you are the legal owner of all files or data you are going to recover through the use of our SOFTWARE or have permission from the legitimate owner to perform these acts. Any illegal use of our SOFTWARE will be solely your responsibility. Accordingly, you affirm that you have the legal right to access all data, information and files that have been hidden.

You further attest that the recovered data, passwords and/or files will not be used for any illegal purpose. Be aware password recovery and the subsequential data decryption of unauthorized or otherwise illegally obtained files may constitute theft or another wrongful action and may result in your civil and (or) criminal prosecution.

All rights not expressly granted here are reserved by Passcape Software.

## 3.2 Registration

---

Detailed instructions for all kinds of orders are available online at [Passcape ordering page](#). Online orders are fulfilled in just a few minutes 24 hours a day 7 days a week.

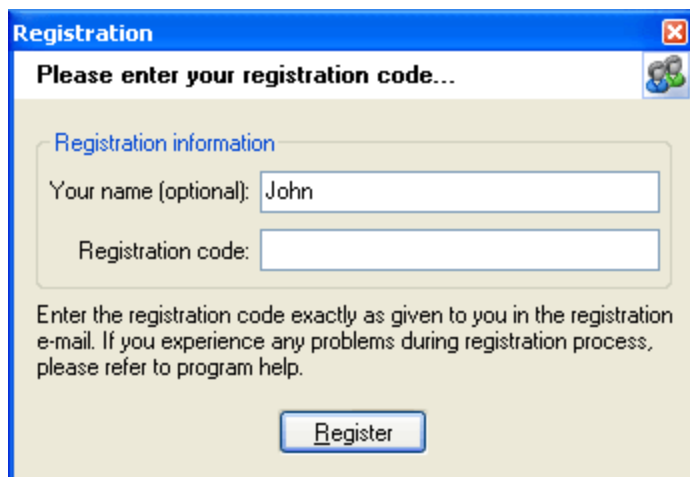
On payment approval (for online orders, usually within a few minutes), we'll send you the registration code which will remove all limitations of the unregistered version. Your registration will be valid for all future versions of **IMPR**.

The ordering pages are on a secure server, ensuring that your confidential information remains confidential. As soon as your order is processed (usually in one business day for on-line payments), you will be provided with the registration code for your copy of the program. If you've made a payment, but haven't received a confirmation letter with your registration code within a reasonable amount of time (two business days for credit card payments or two weeks for other payments), please notify us!

**Important: when completing the order form, please double-check that your e-mail address is correct. If it will not, we'll be unable to send you the registration code.**

To complete the registration process

- Run the program
- Click **more...** button
- Select **Registration** from the popup menu
- Enter your registration code and name (optional) into the related fields and click the **Register** button.

A screenshot of a Windows-style registration dialog box titled "Registration". The dialog has a blue title bar with a close button. Below the title bar, it says "Please enter your registration code...". There is a "Registration information" section with two text input fields: "Your name (optional):" containing the text "John" and "Registration code:" which is empty. Below these fields, there is a paragraph of text: "Enter the registration code exactly as given to you in the registration e-mail. If you experience any problems during registration process, please refer to program help." At the bottom of the dialog is a "Register" button.

It is recommended to use the Copy and Paste commands instead of typing the code by hand. To do that, select the license key text in the registration message you have received with the mouse or using the text selection keyboard shortcuts (**Shift + arrow keys**). Then press the **Ctrl + Ins** shortcut on the keyboard to copy the selected block to Windows' Clipboard. Then open the registration window in the program, place the cursor in the registration key field and then press the **Shift + Ins** shortcut on the keyboard to paste the text from clipboard to that field. Next, place the cursor in the user name field, enter your name and then click on the **Register** button. If you have done everything right, the program will display the confirmation message.

### 3.3 Limitation of unregistered version

---

An unregistered version of the **IncrediMail Password Recovery** shows only first 3 characters of the decrypted passwords and has some functional limitations.

**Technical support**

## 4 Technical support

### 4.1 Reporting problems

---

If you have a problem, please contact us at [support@passcape.com](mailto:support@passcape.com). Please inform us about the following:

- Windows version including service packs and other fixes installed
- Program full version (see **About** dialog)
- Program registration information if any
- Detailed description of your problem (as much information as possible)

If you're reporting about program error, please attach **Crash.log** and **Impr.log** files located in the **IncrediMail Password Recovery** installation directory.

### 4.2 Suggesting features

---

If you have any questions, comments or suggestions about the program or would like more information, email us at: [info@passcape.com](mailto:info@passcape.com). Please don't forget to mention the program name and version. Also make sure you have the latest program version installed. Your feedback helps us to improve our products and work more effective.

### 4.3 Contacts

---

Please don't hesitate to send your questions regarding our products to e-mail [support@passcape.com](mailto:support@passcape.com). You will get reply during one or two days. Note, that registered users have priority in technical support.

If you experience any problems during registration process, please send a letter to [sales@passcape.com](mailto:sales@passcape.com). We will be happy to assist you with the registration.

**Please write in English!**

You can find other password recovery utilities at <https://www.passcape.com>.